

Lombardo Consulting Group

# Election Monitor ©

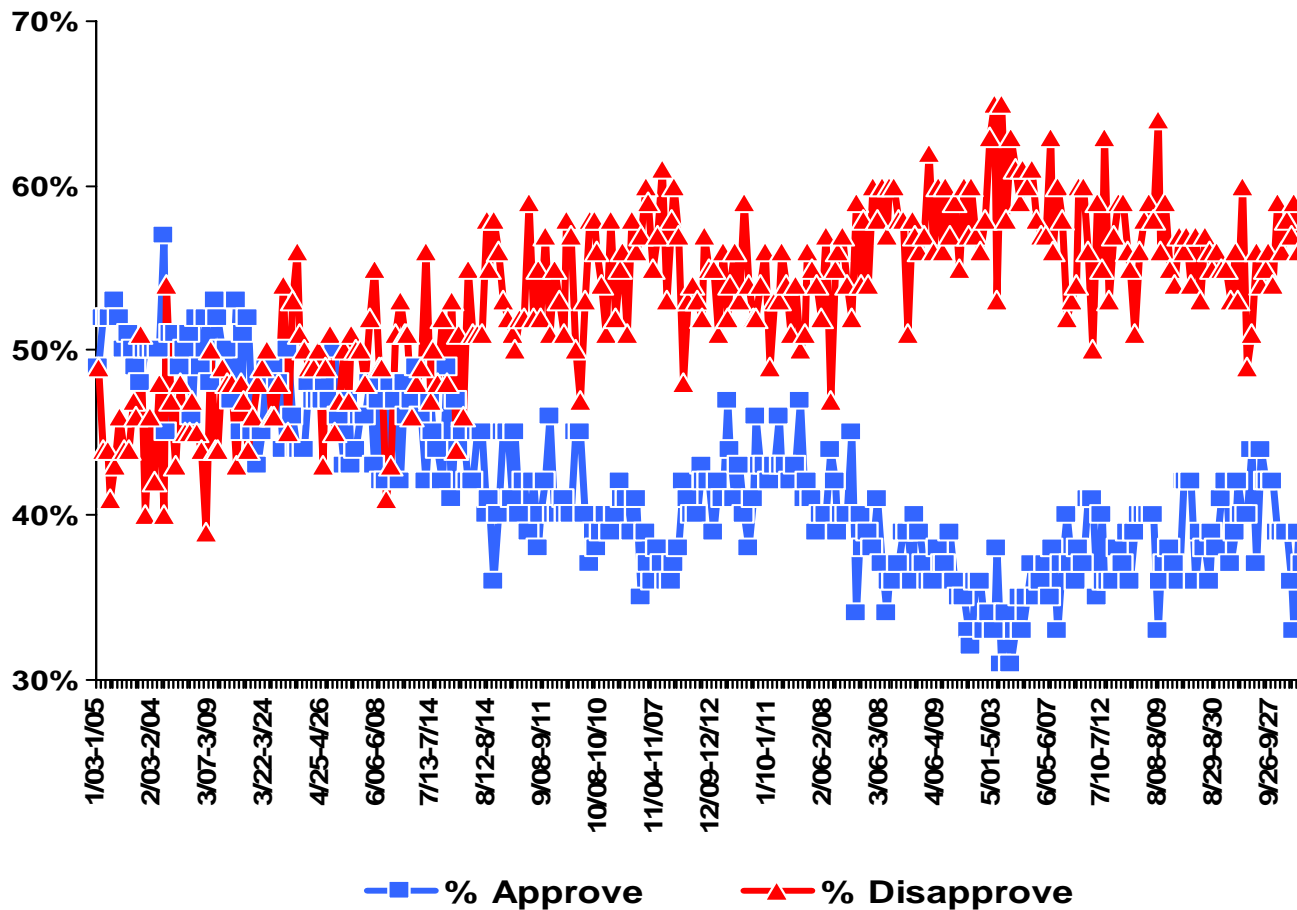
---

**A Compilation of Publicly-Available Survey Data**

**January 1<sup>st</sup>, 2005 - Present**

Lombardo Consulting Group  
1850 M Street NW  
Suite 430  
Washington DC 20036  
[www.lombardoconsultinggroup.com](http://www.lombardoconsultinggroup.com)

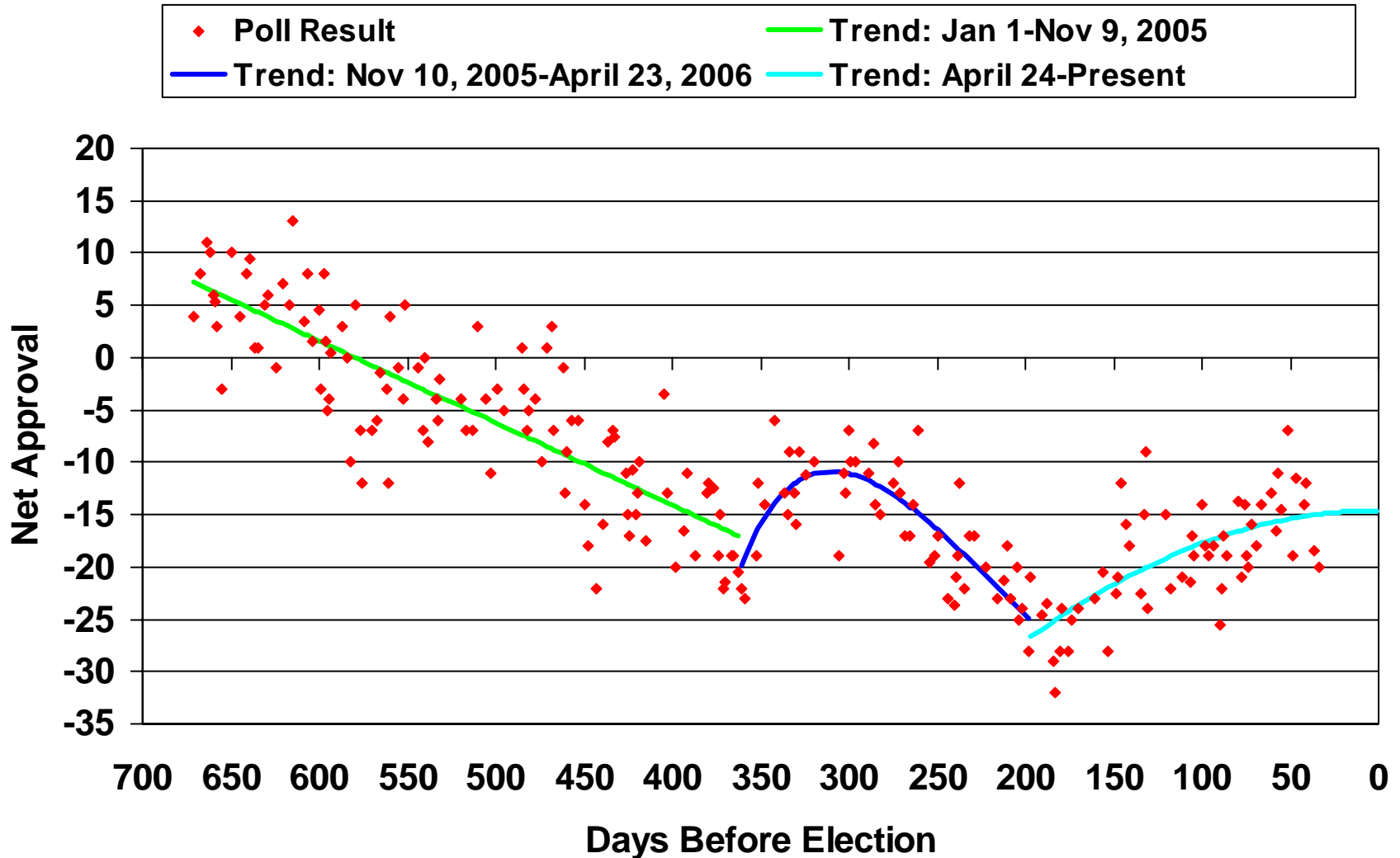
# George W. Bush Job Approval Rating



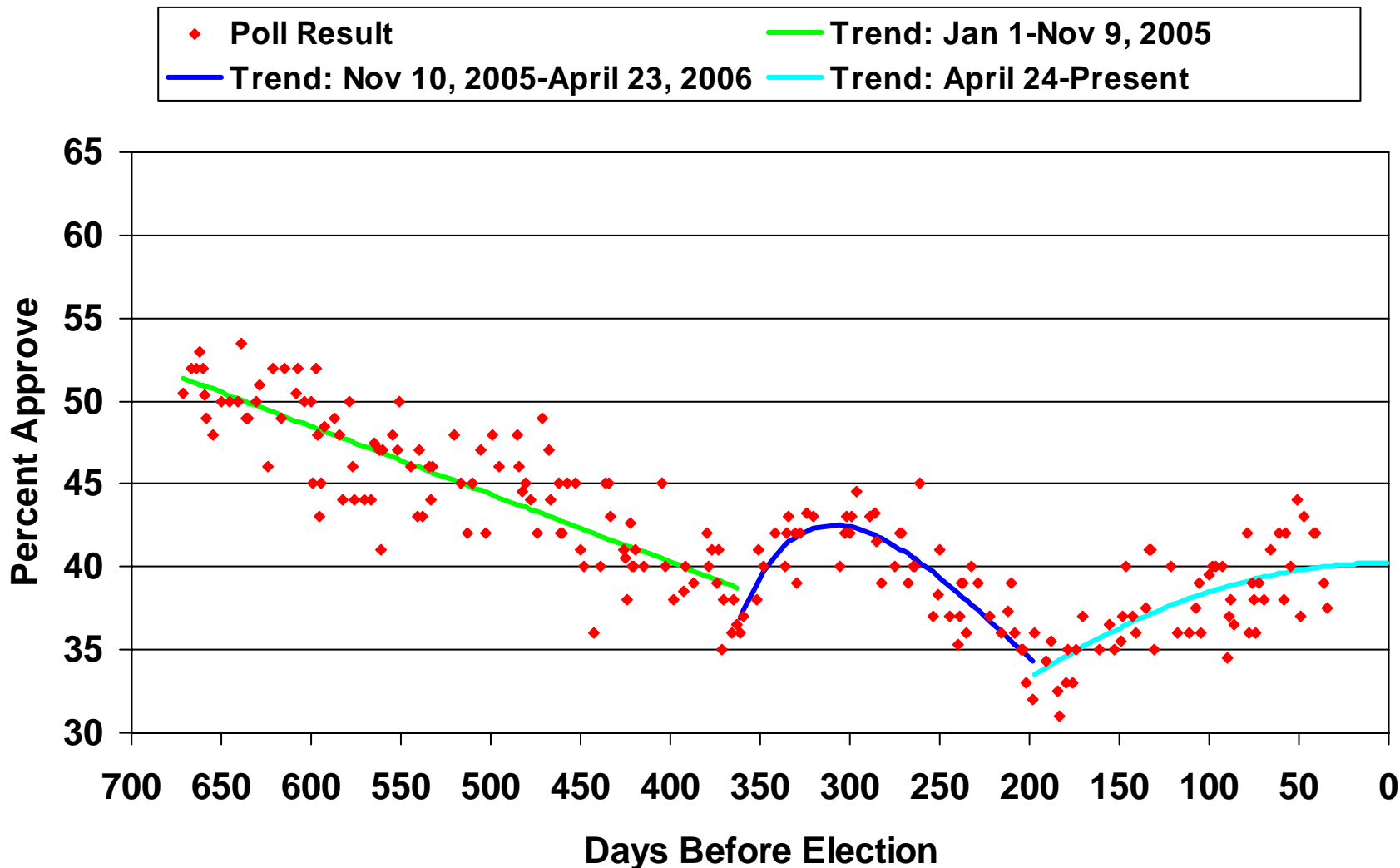
# Net Trend to Bush Job Approval

## 2005-2006

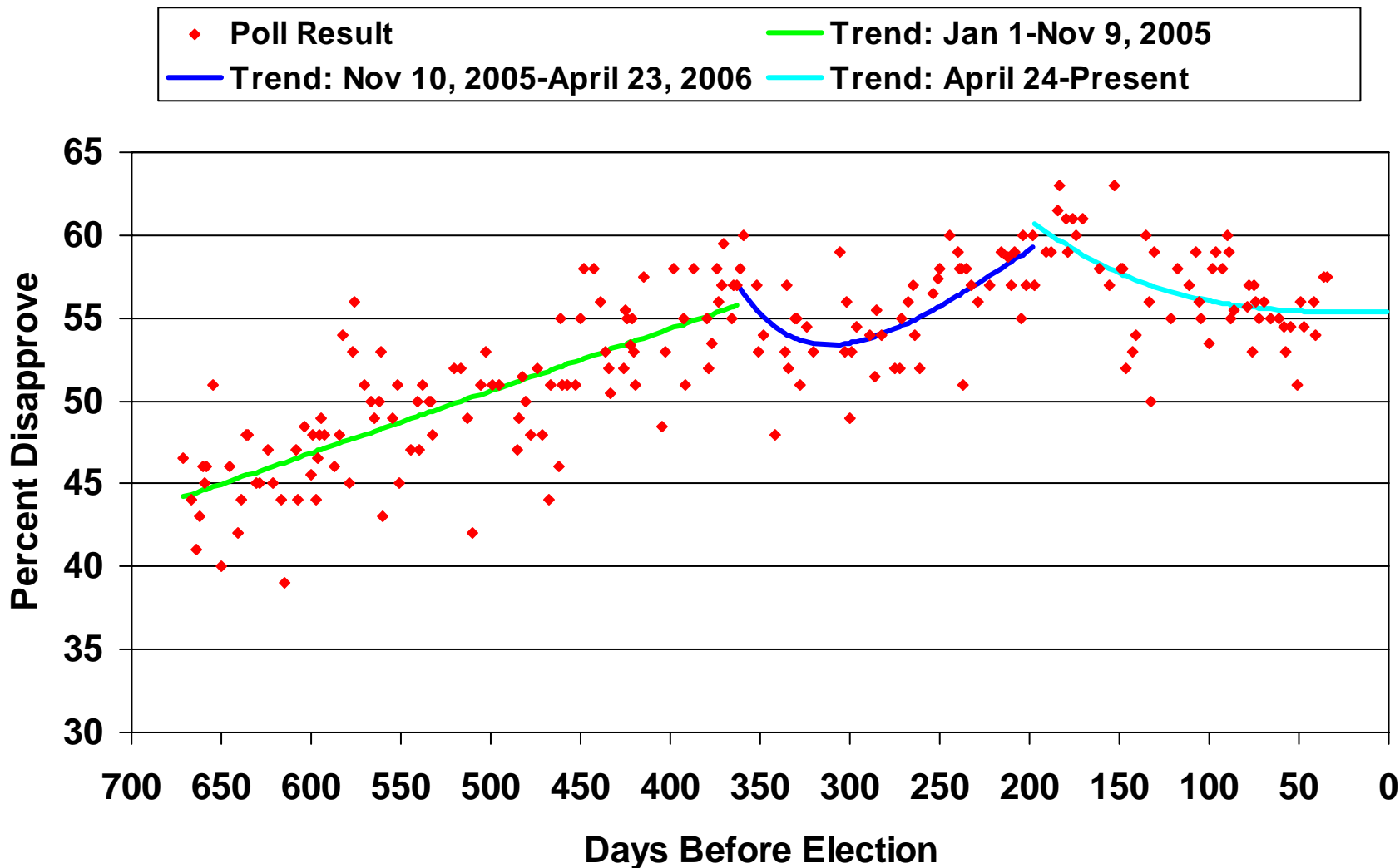
(% approve - % disapprove)



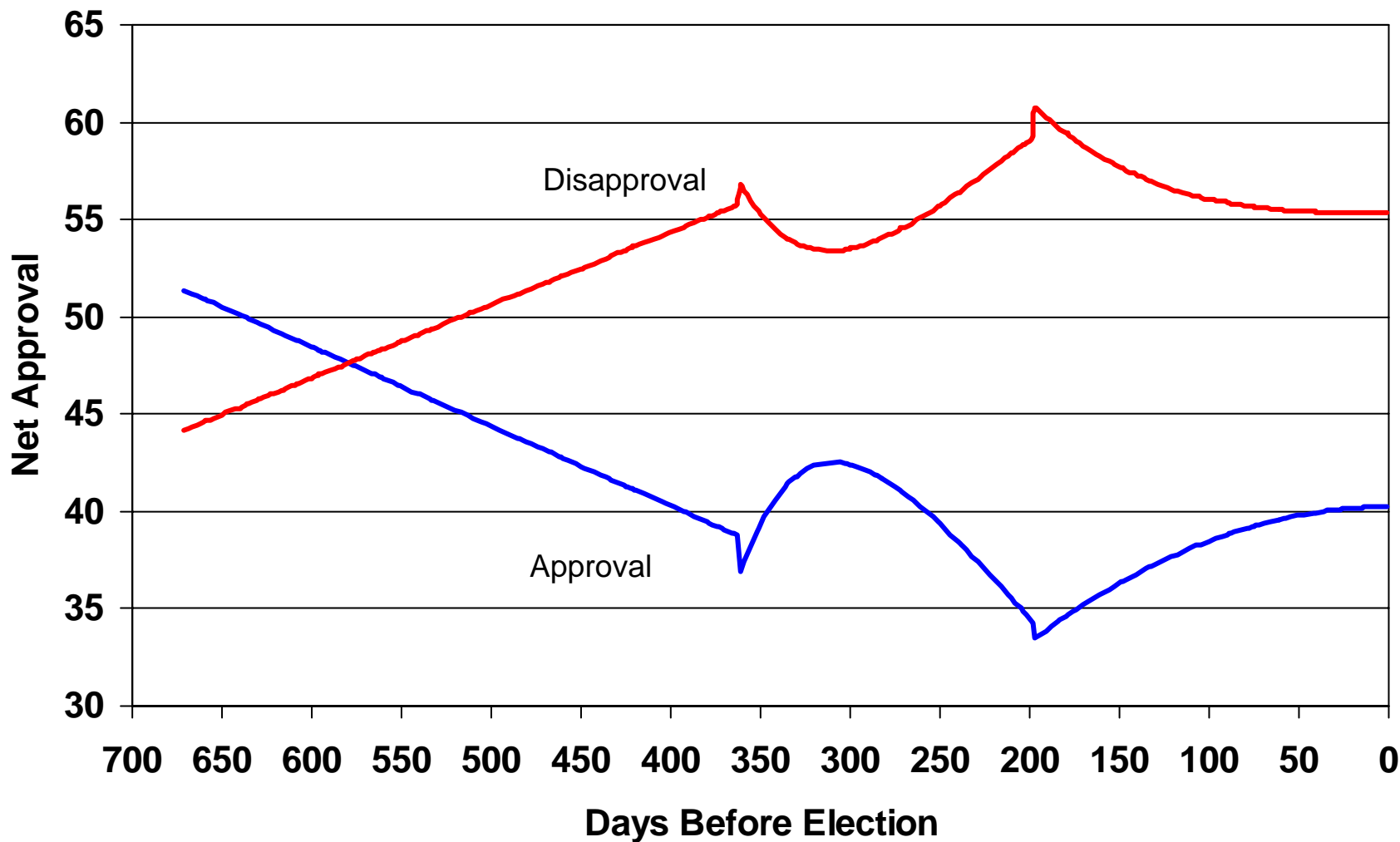
# Trend to Bush Job Approval 2005-2006



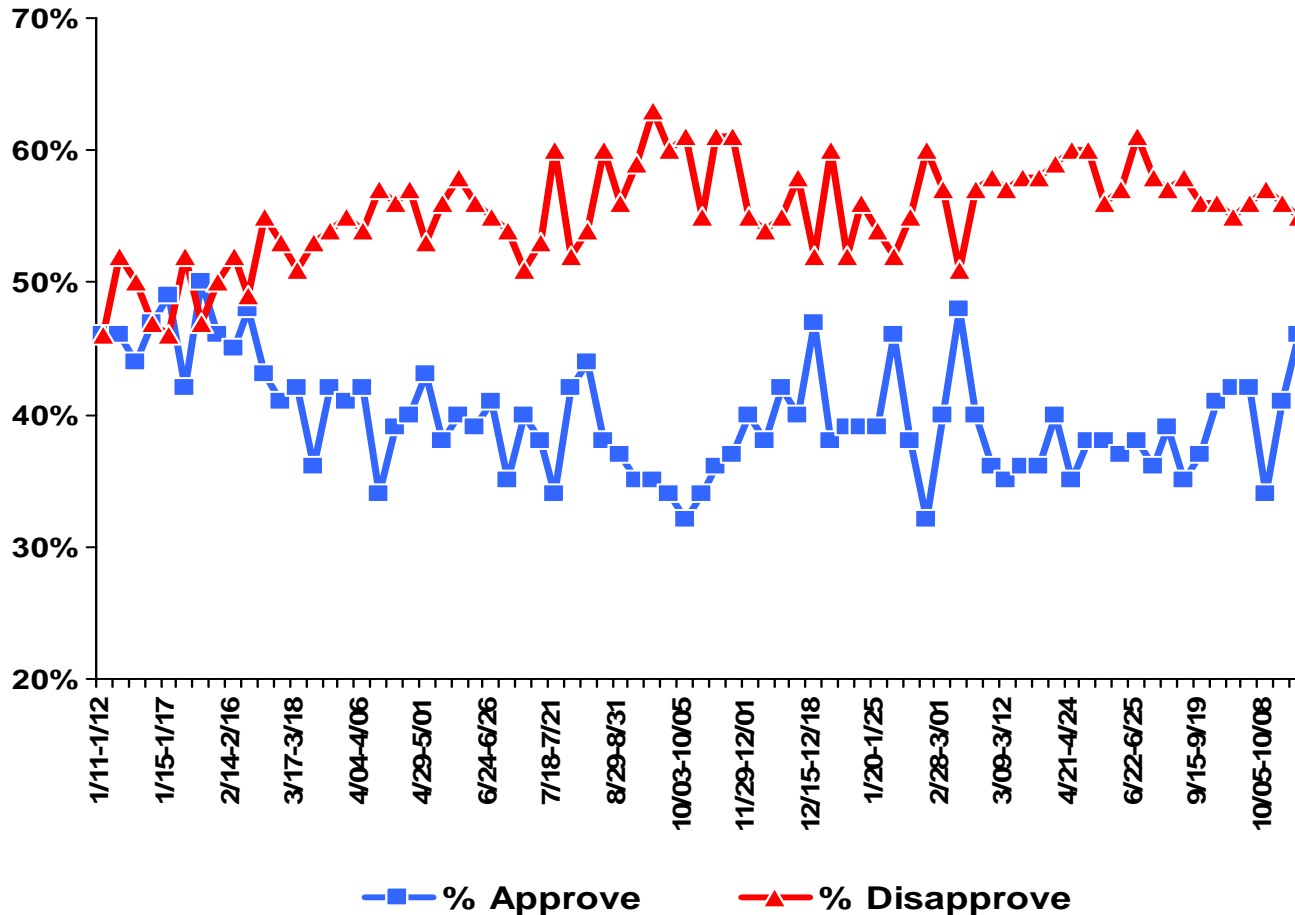
# Trend to Bush Job Disapproval 2005-2006



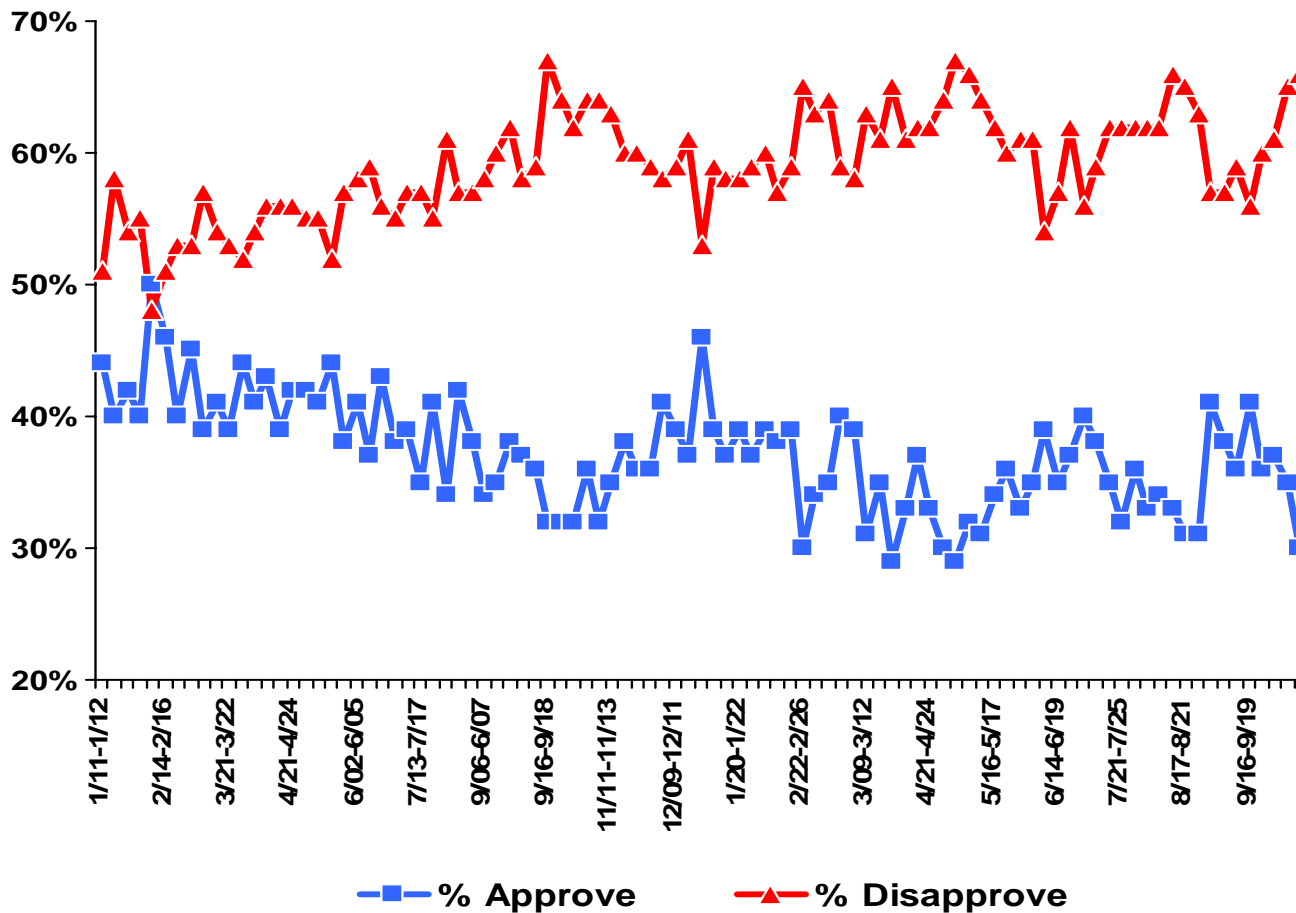
# Trend to Bush Job Performance 2005-2006



# The Economy: George W. Bush Job Approval Rating

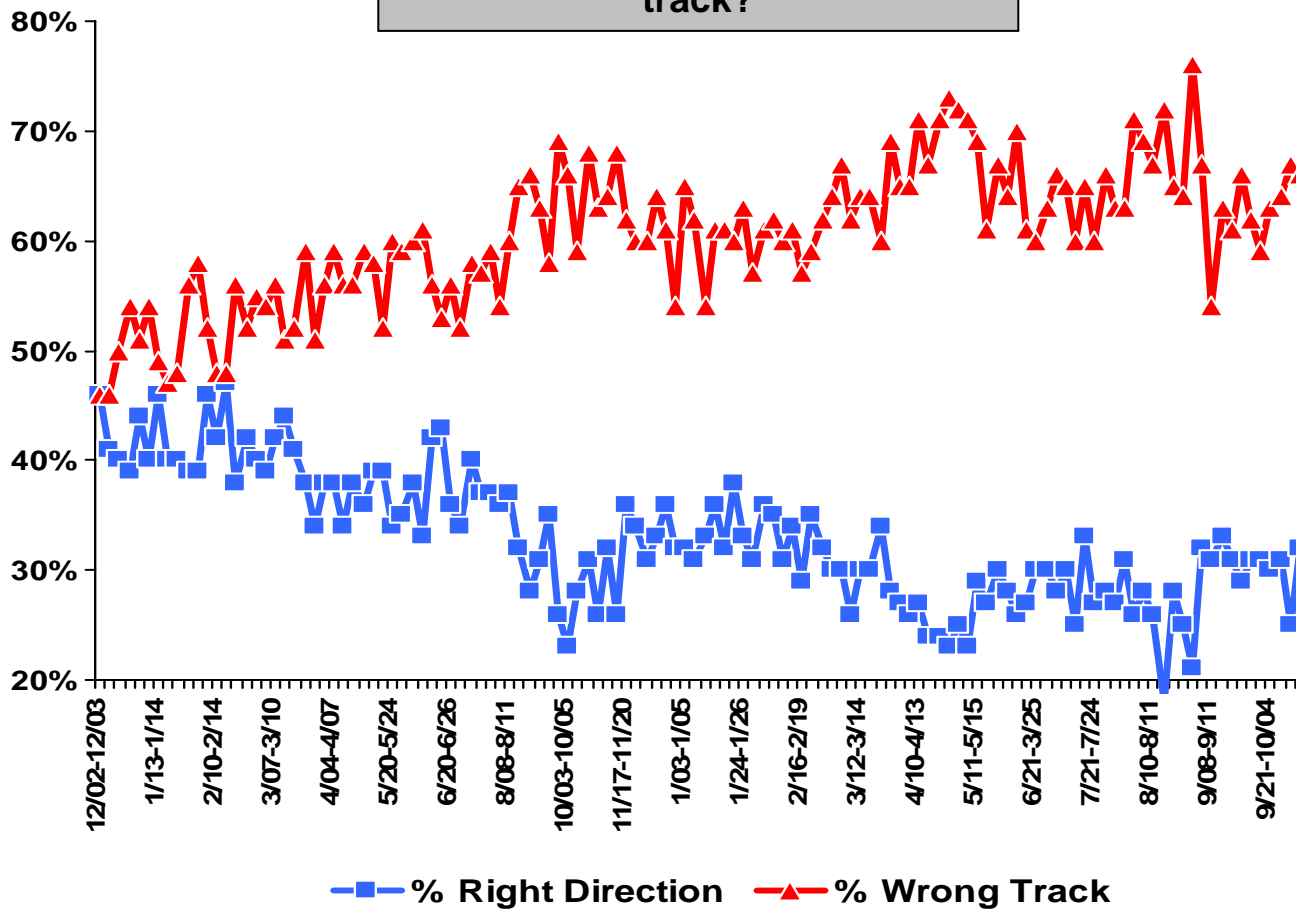


# War in Iraq: George W. Bush Job Approval Rating



# Direction of the Country

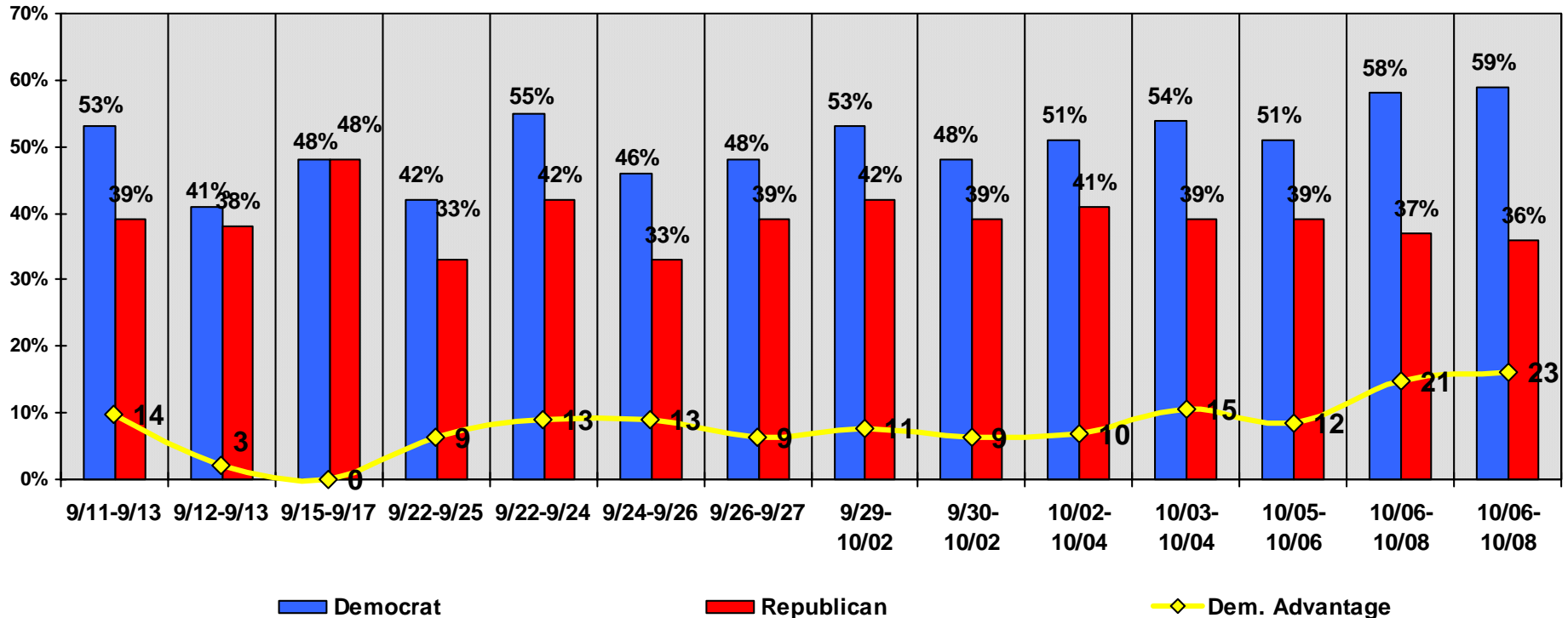
Is the country headed in the right direction or off on the wrong track?



# Election Monitor Perspective: Generic Congressional Ballot—Likely Voters

If the election for Congress were held today, would you vote for the Democratic candidate or the Republican candidate from your district?

Gallup, Fox, Zogby, AP-Ipsos, CNN, USA Today, Newsweek, Time Surveys



Democrat

Republican

Dem. Advantage

Unless otherwise noted all surveys sample "Likely Voters"

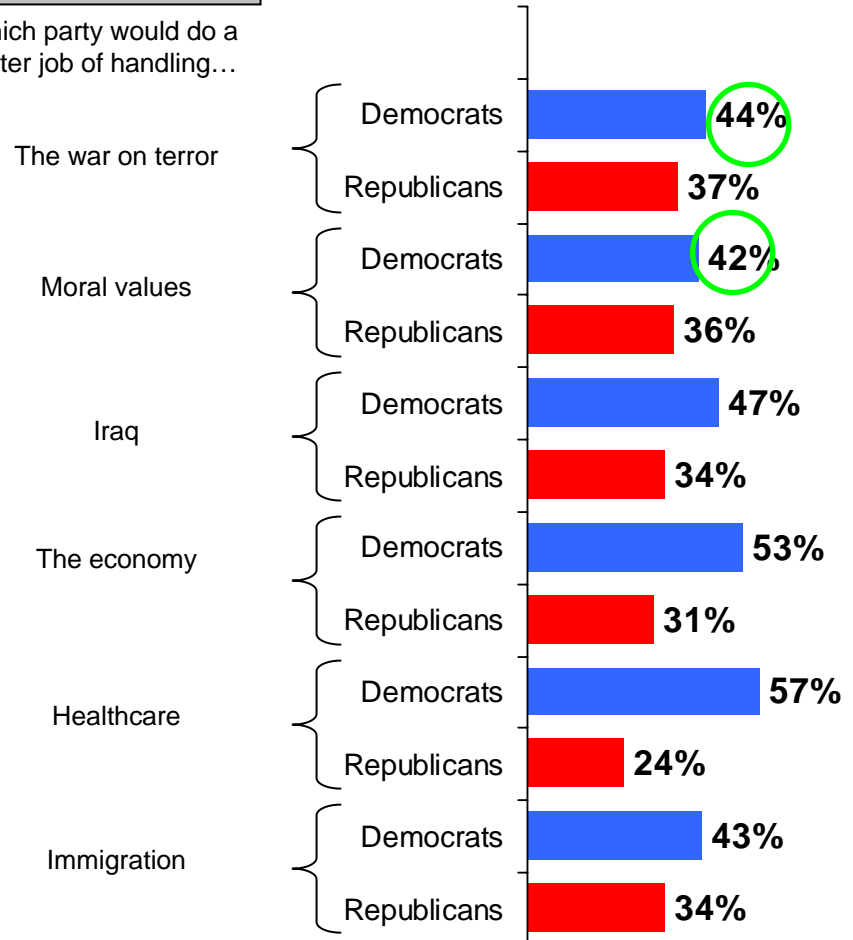
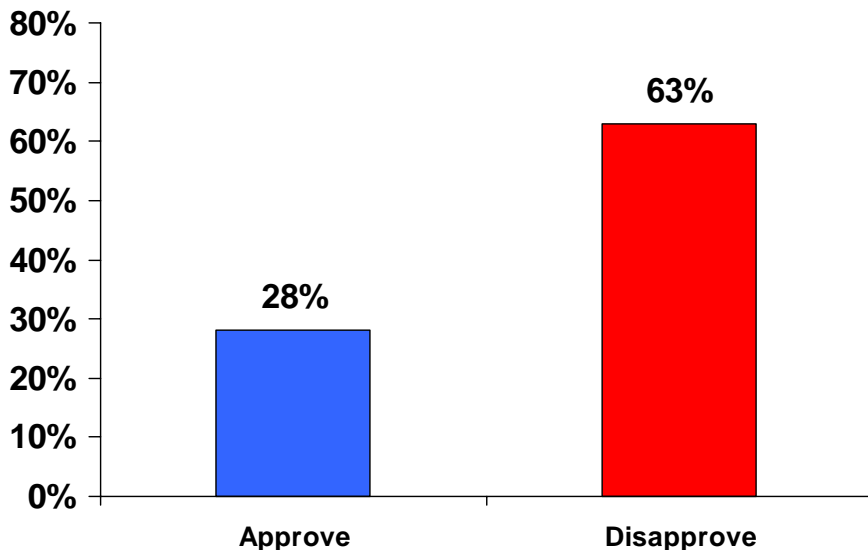
# Opinion Monitor Perspective: Congress & The Issues

**Do you approve or disapprove of the way Congress is doing its job?**

CNN Survey  
10/06-10/08  
n=1028 Adults

**Newsweek Survey  
10/05-10/06  
N=1004 Adults**

Which party would do a better job of handling...



# Opinion Monitor Perspective: The House 2006

**If Congressional elections were held today, who would you lean towards voting for in your district?**

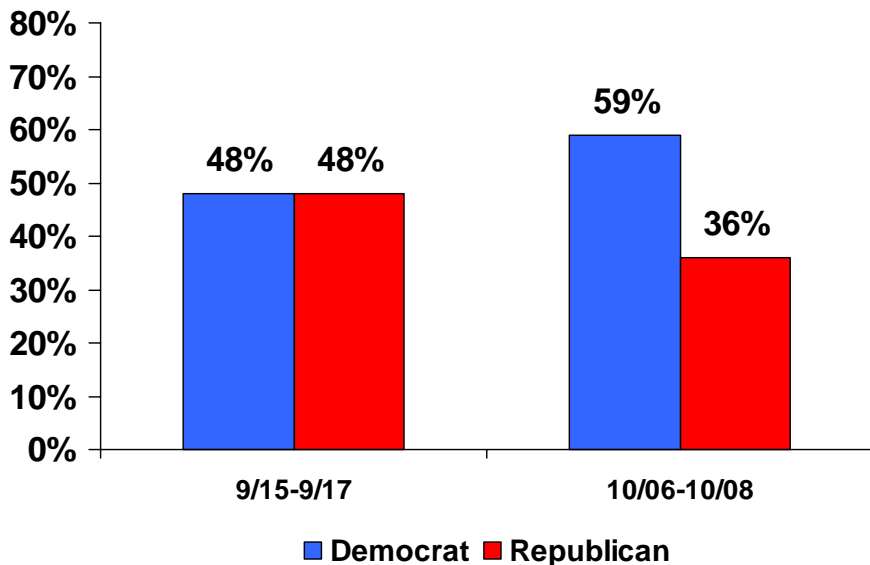
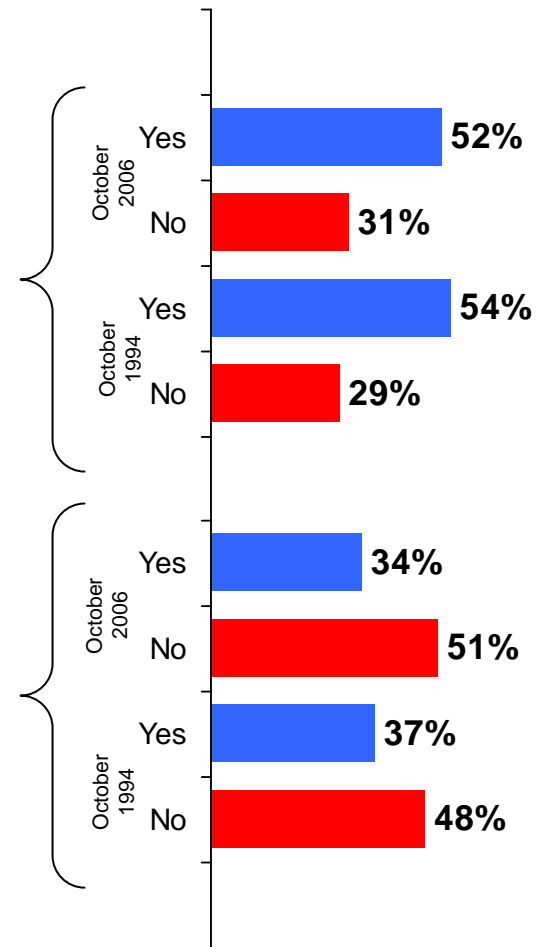
USA Today/Gallup Surveys  
Likely Voter Model

**CNN Survey  
10/06-10/08**

Please tell me whether or not you think each of the following political office-holders deserves to be re-elected or not?

The representative in your congressional district

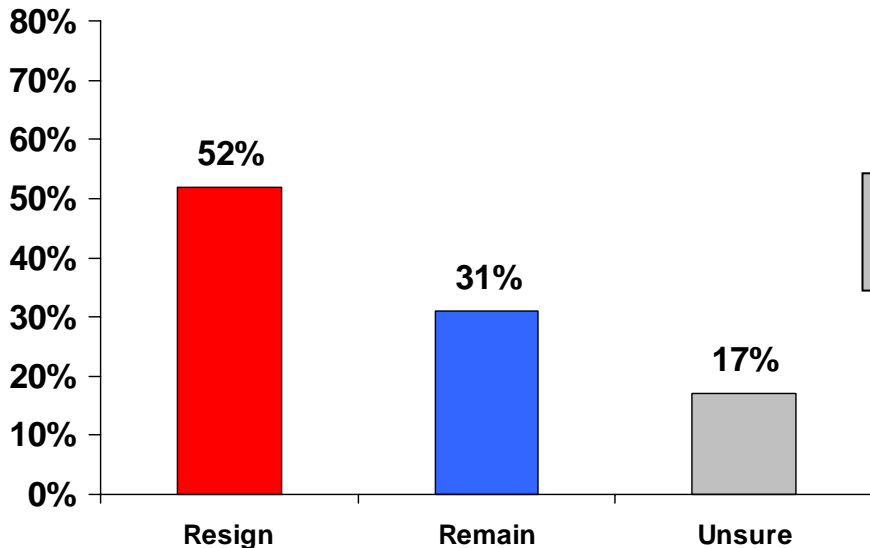
Most members of congress



# Opinion Monitor Perspective: The Mark Foley Scandal

Thinking specifically about the speaker of the House Dennis Hastert: Do you think Hastert should resign as the speaker of the House or do you think he should remain as the speaker of the House?

CNN Survey  
10/06-10/08  
N=1028 Adults



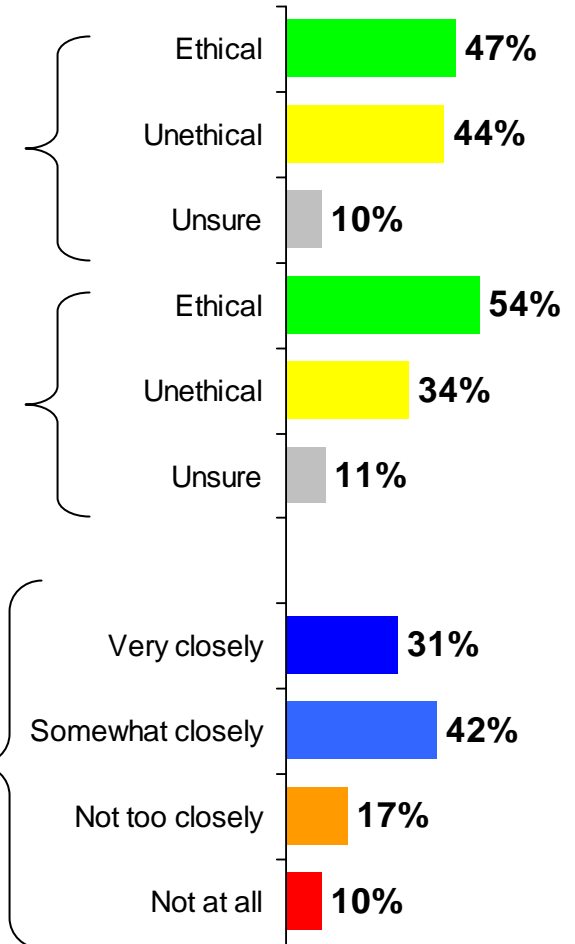
CNN Survey  
10/06-10/08  
N=1028 Adults

Generally speaking, do you think most **Republicans** in Congress are ethical or unethical?

Generally speaking, do you think most **Democrats** in Congress are ethical or unethical?"

ABC/Post Survey  
10/05-10/08  
N=1204 Adults

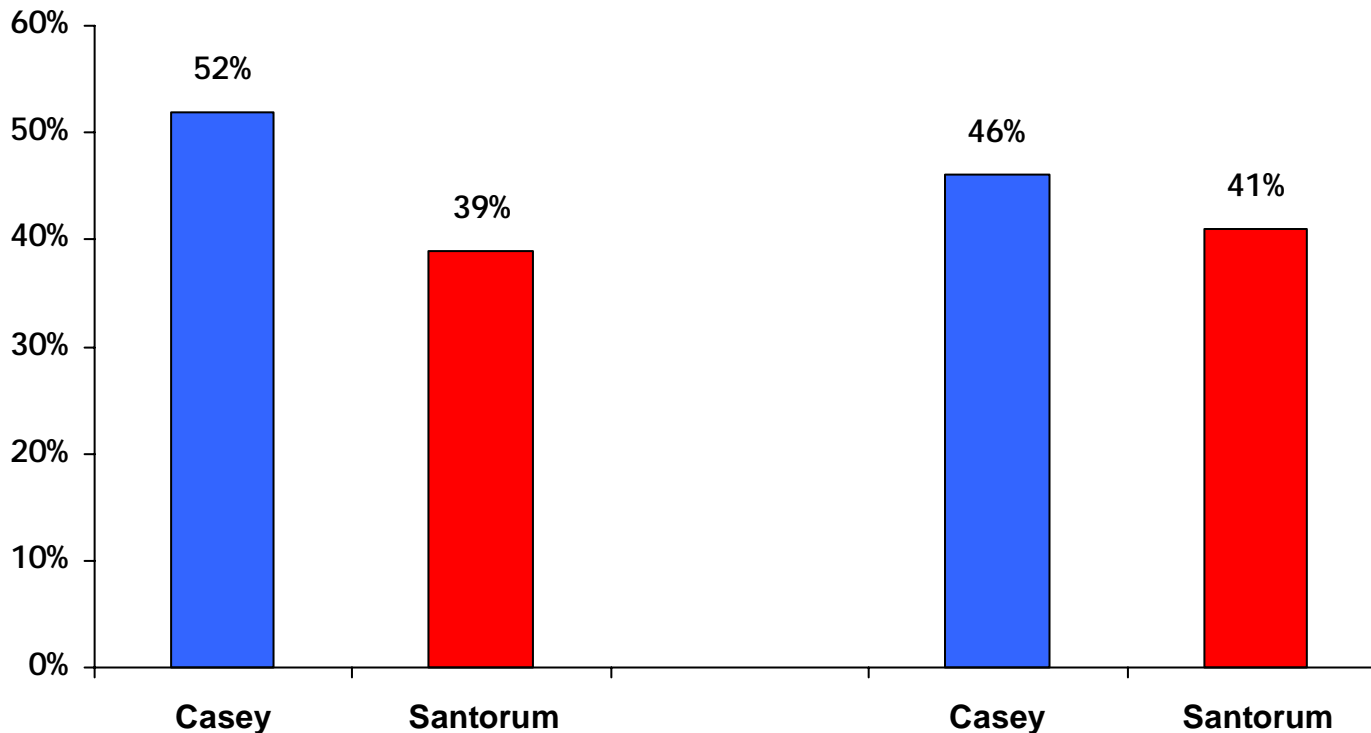
How closely have you been following this story - very closely, somewhat closely, not too closely or not closely at all?



# Opinion Monitor Outlook: Pennsylvania Senate Race

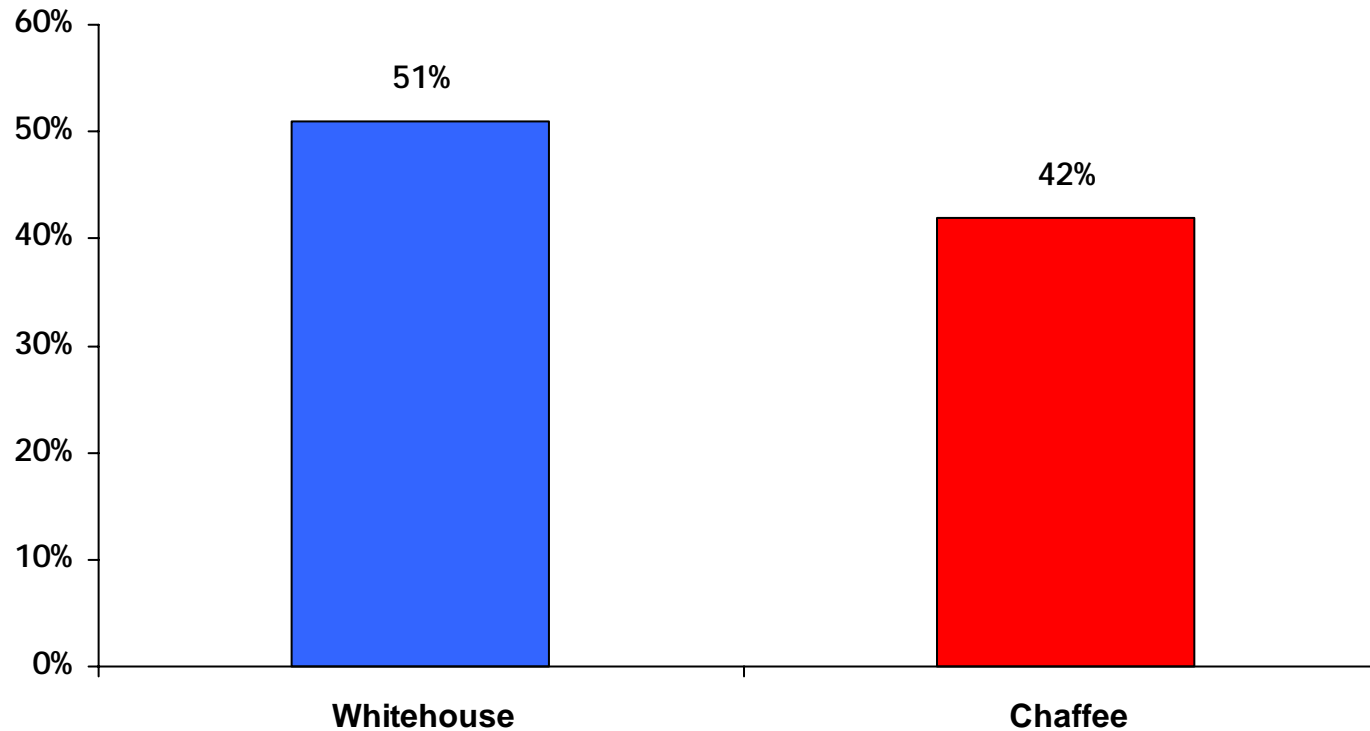
**Rasmussen Survey**  
10/06  
N=500 LV

**Muhlenberg Survey**  
10/03-10/08  
N=511 LV



# Opinion Monitor Outlook: Rhode Island Senate Race

Rasmussen Survey  
10/04  
N=500 LV



# Lombardo Consulting Group

The LCG Opinion Monitor is a compilation and analysis of various publicly-available surveys pertaining to selected political and policy-related issues including but not limited to:

- ABC News/Washington Post
- American Research Group
- Associated Press/Ipsos
- CBS News
- CNN
- Fox News/Opinion Dynamics
- Gallup
- Annenberg Election Survey
- Newsweek
- The Pew Research Center
- Time
- USA Today

Data updated daily