

Lombardo Consulting Group

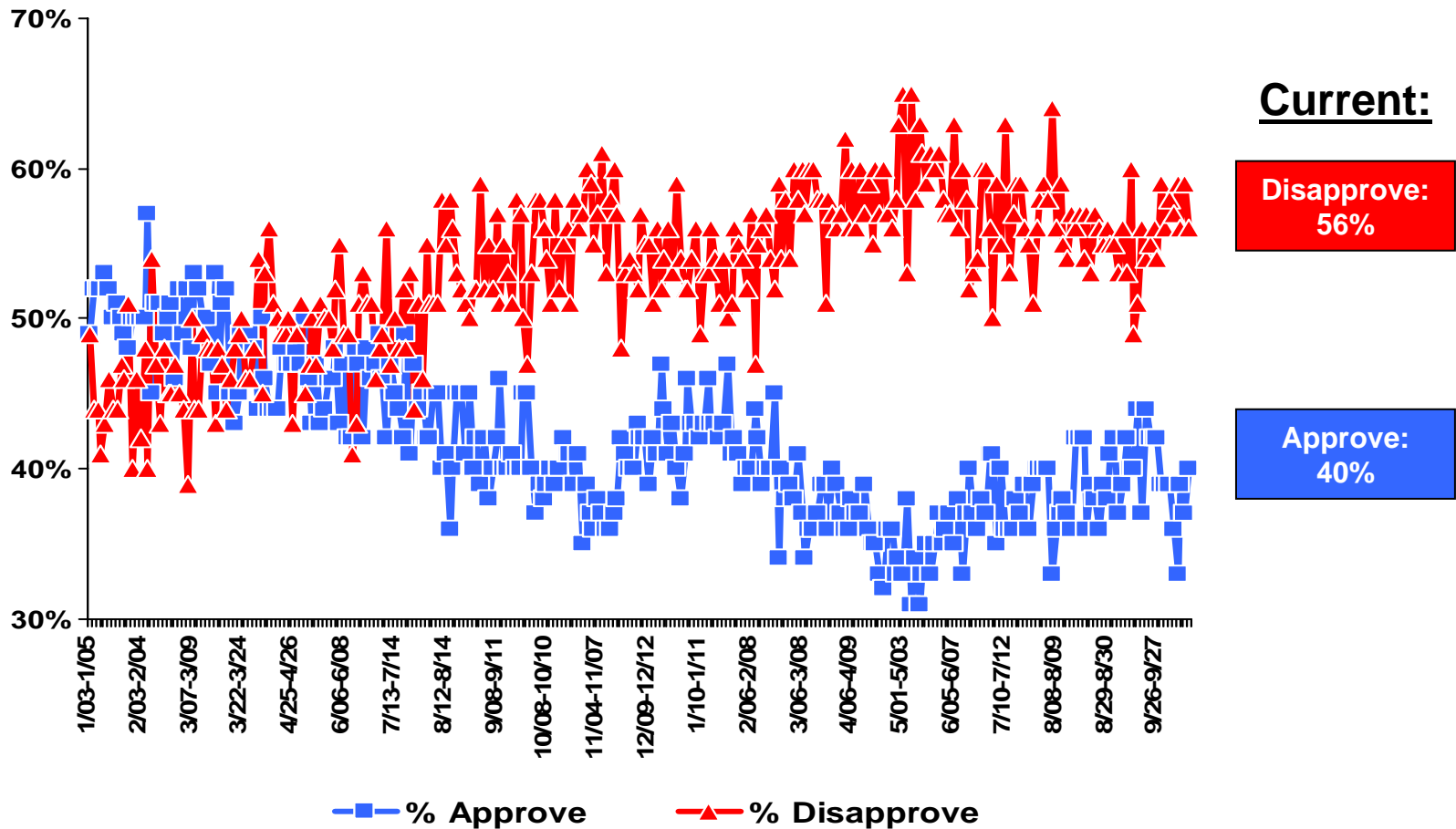
Election Monitor ©

A Compilation of Publicly-Available Survey Data

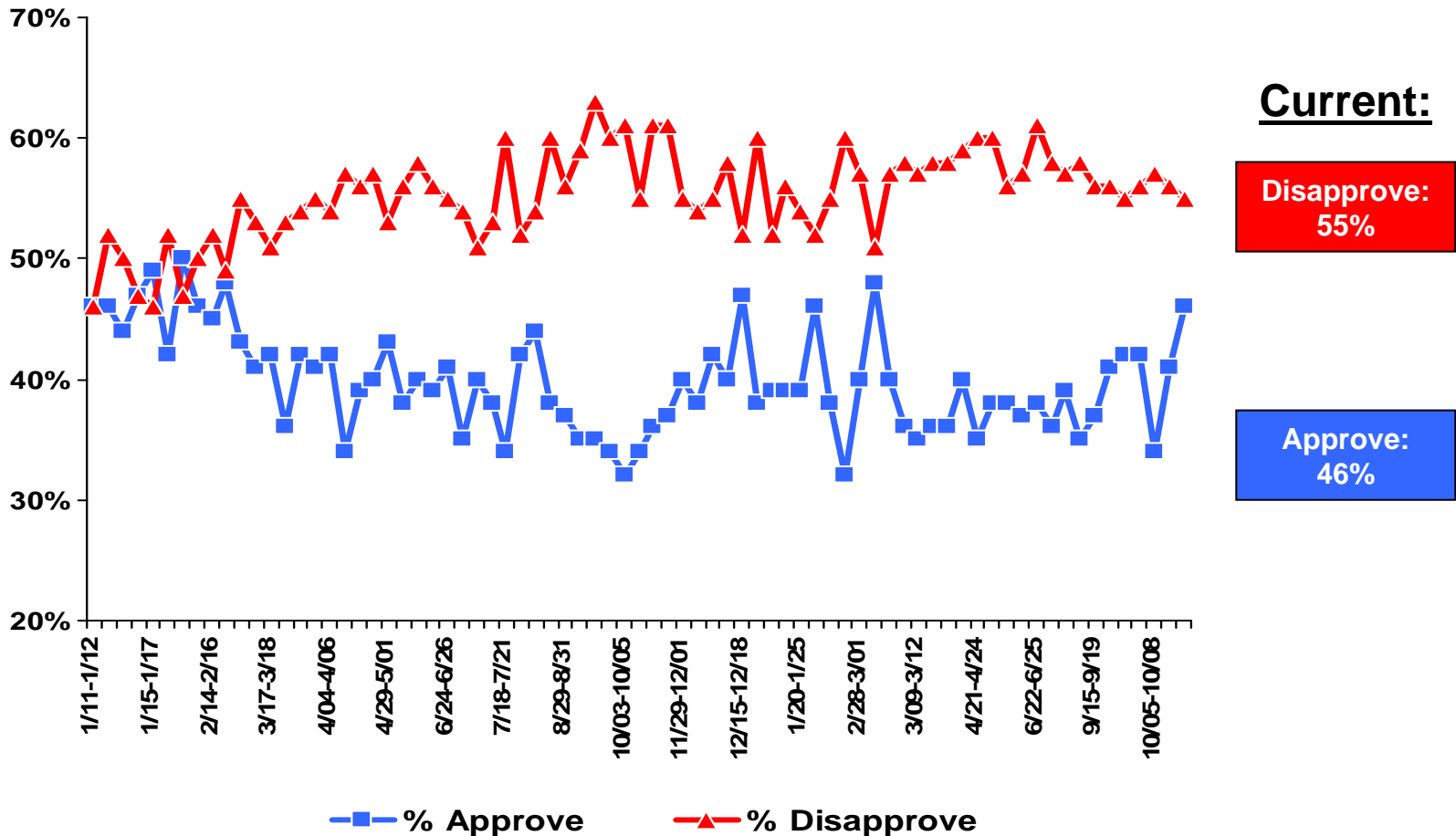
January 1st, 2005 - Present

Lombardo Consulting Group
1850 M Street NW
Suite 430
Washington DC 20036
www.lombardoconsultinggroup.com

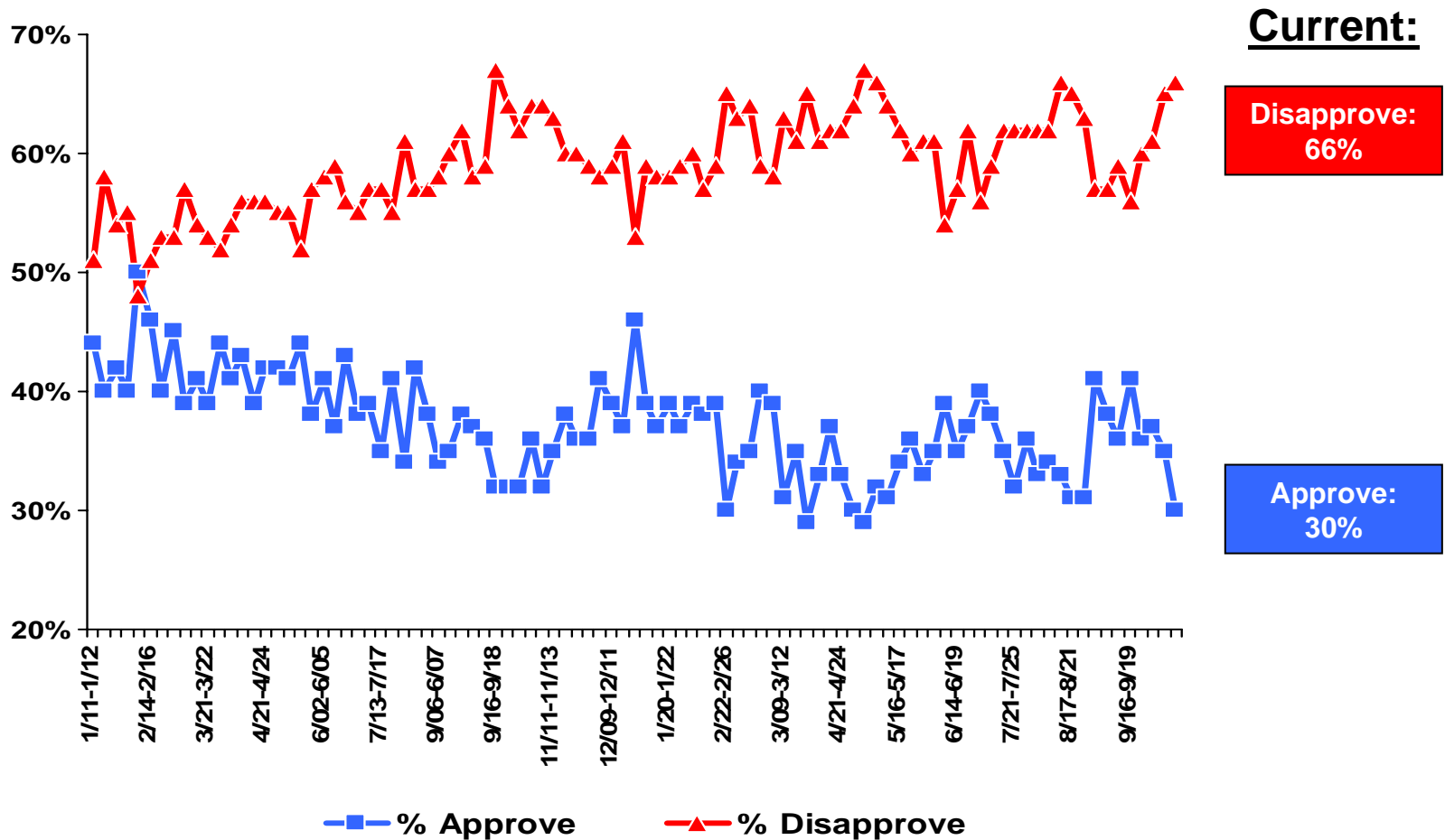
George W. Bush Job Approval Rating



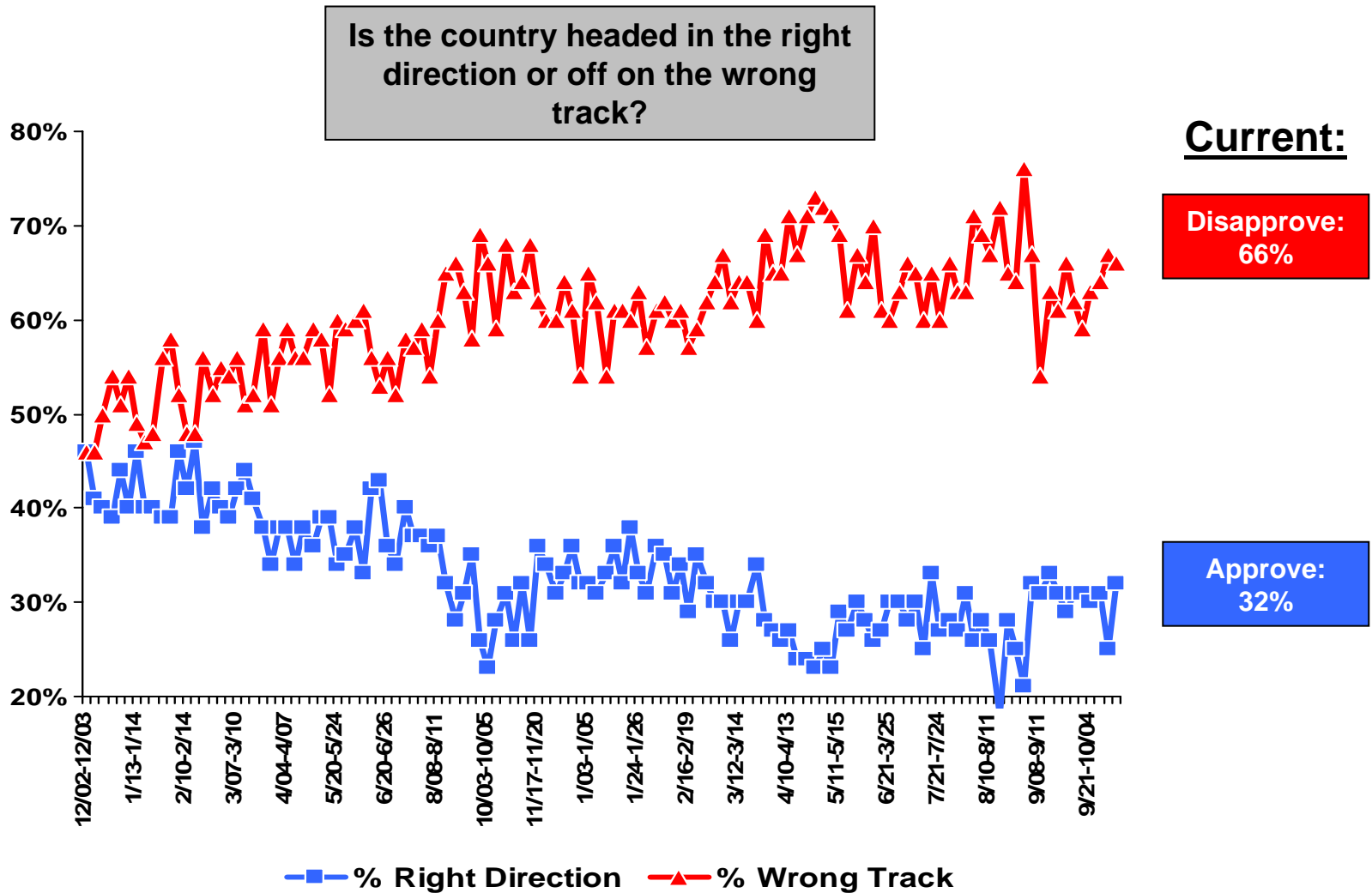
The Economy: George W. Bush Job Approval Rating



War in Iraq: George W. Bush Job Approval Rating



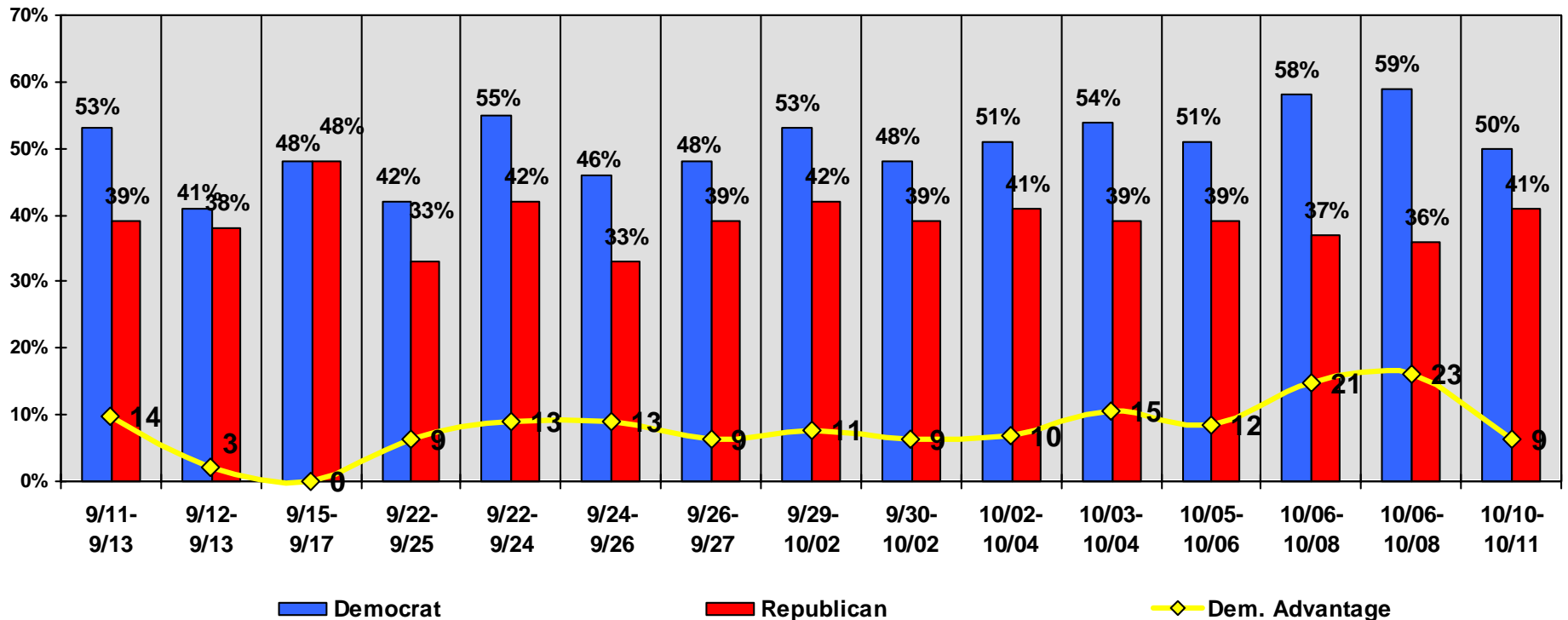
Direction of the Country



Election Monitor Perspective: Generic Congressional Ballot—Likely Voters

If the election for Congress were held today, would you vote for the Democratic candidate or the Republican candidate from your district?

Gallup, Fox, Zogby, AP-Ipsos, CNN, USA Today, Newsweek, Time Surveys



Democrat

Republican

Dem. Advantage

Unless otherwise noted all surveys sample "Likely Voters"

Election Monitor Perspective: The Churchgoing Vote in 2006

Generic House Vote Net Democratic Vote

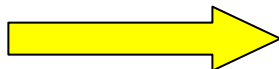
Percent Voting Democratic Minus Percent Voting Republican
(Among Registered Voters)

Gallup Surveys

	June-July	August	September	June-September Average	October
White frequent churchgoers*	-21	-29	-22	-23	0
White infrequent churchgoers	19	12	20	19	26
All others	61	56	50	55	64

2004 Exit Poll Data (Church Attendance)

*Those who self report attending church weekly, or more than weekly



	Bush	Kerry	Net Bush
More than weekly (16%)	64%	35%	+29
Weekly (26%)	58%	41%	+17

Election Monitor Perspective: The House 2006

Do you approve or disapprove of the job that Congress is doing?

Fox News Survey
10/10-10/11
n=900 LV

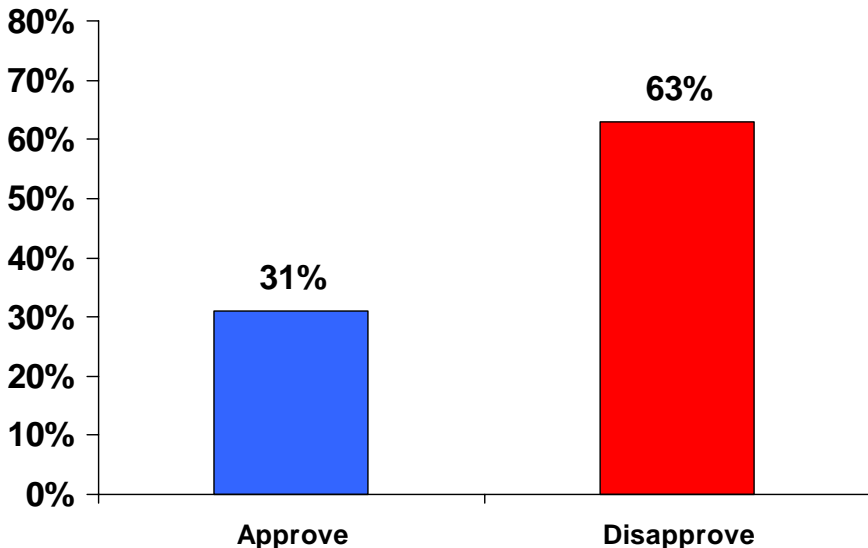
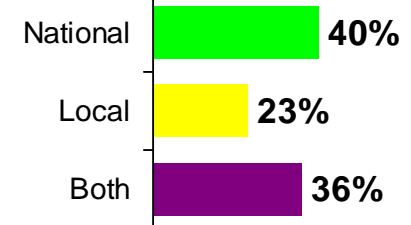
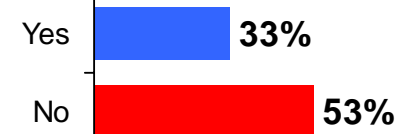
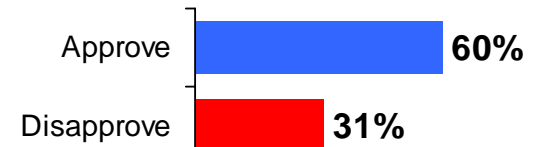
**Fox News Survey
10/10-10/11
n=900 LV**

Do you approve or disapprove of the job your own representative is doing...?

Do you think most **Democrats** in Congress deserve to be re-elected?

Do you think most **Republicans** in Congress deserve to be re-elected?

What is more important to you when deciding your vote for Congress this election? National and International issues, State and Local issues...or both?



LCG Election Monitor

**Senate Outlook
2006**

Election Monitor Senate Outlook: Maryland



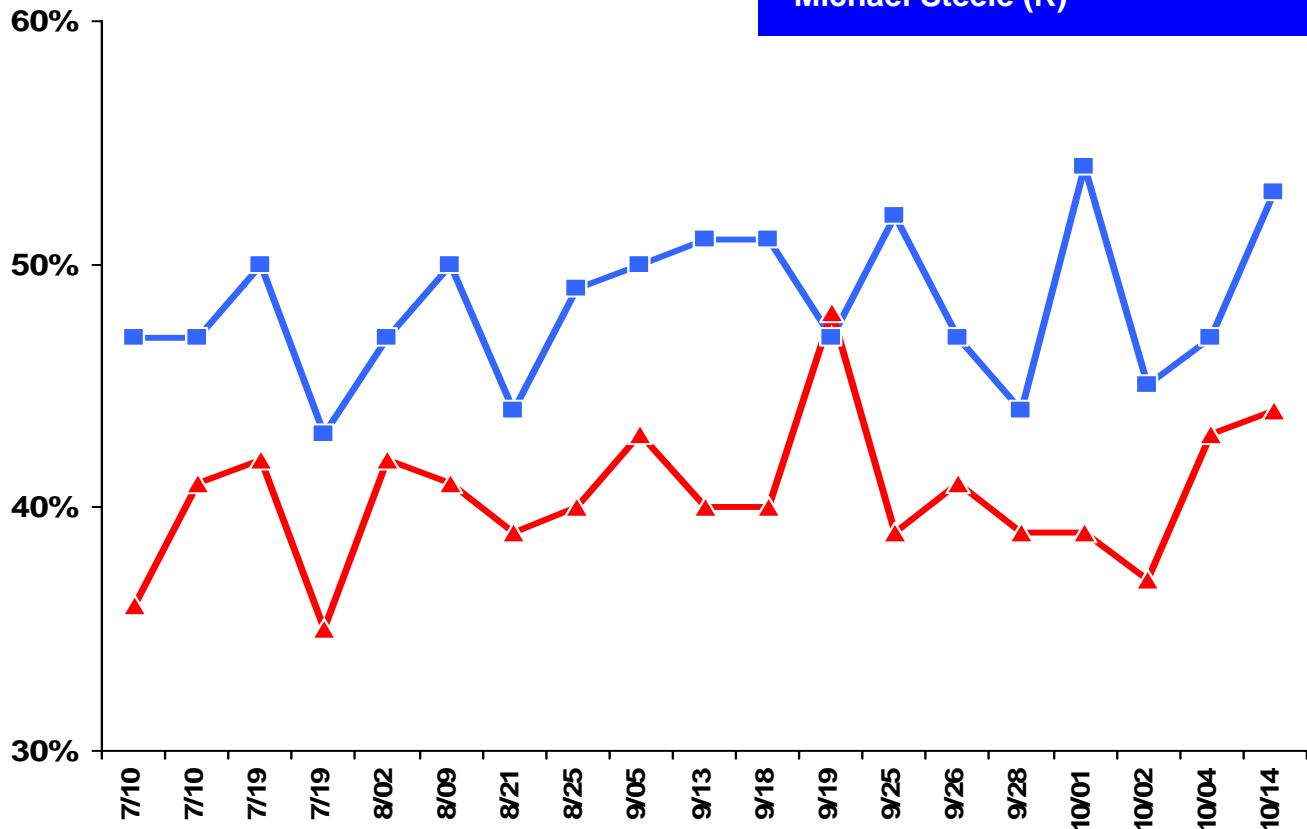
**Ben Cardin
(D)**



**Michael
Steele (R)**



LCG Average	Most Recent 3 Polls
Ben Cardin (D)	48%
Michael Steele (R)	40%



Election Monitor Senate Outlook: Missouri



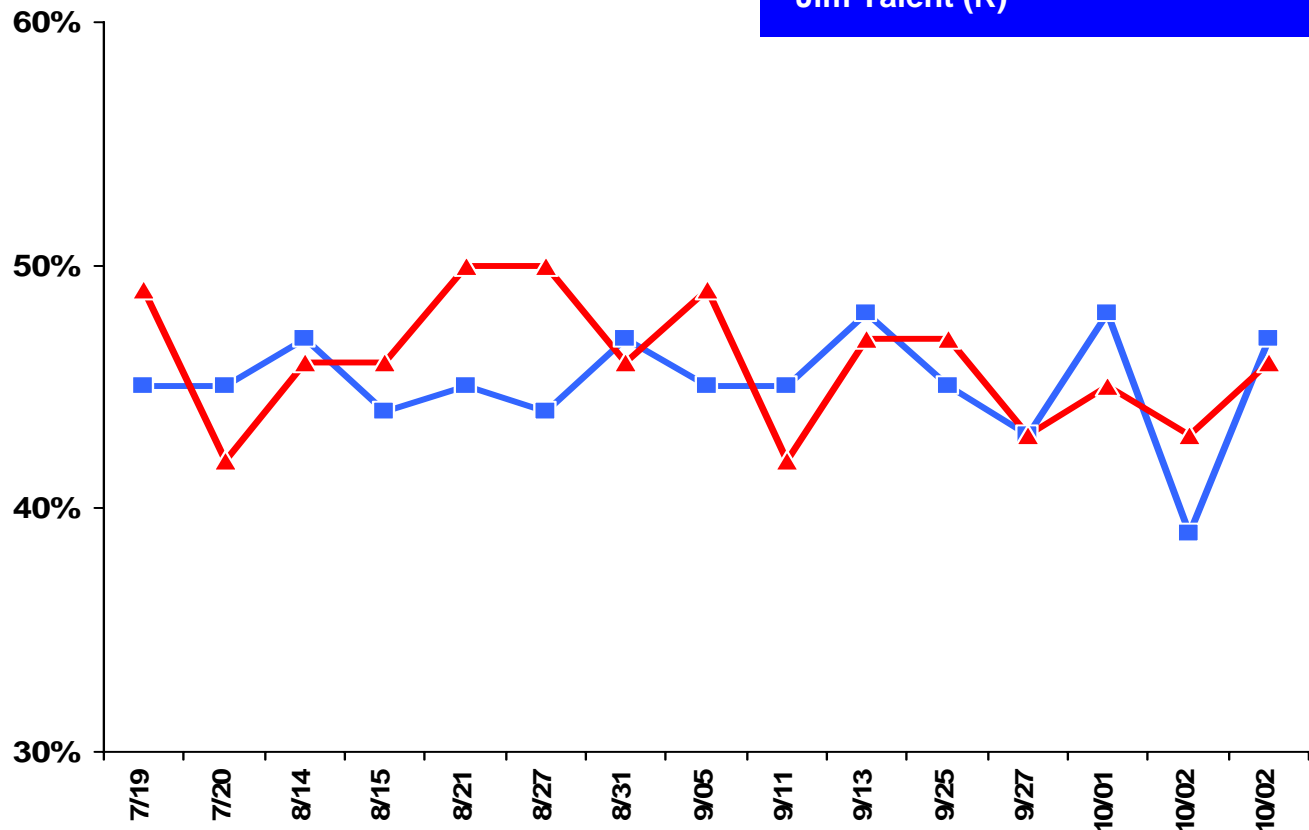
Claire McCaskill (D)



Jim Talent (R)



LCG Average	Most Recent 3 Polls
Claire McCaskill (D)	45%
Jim Talent (R)	45%



Election Monitor Senate Outlook: Montana



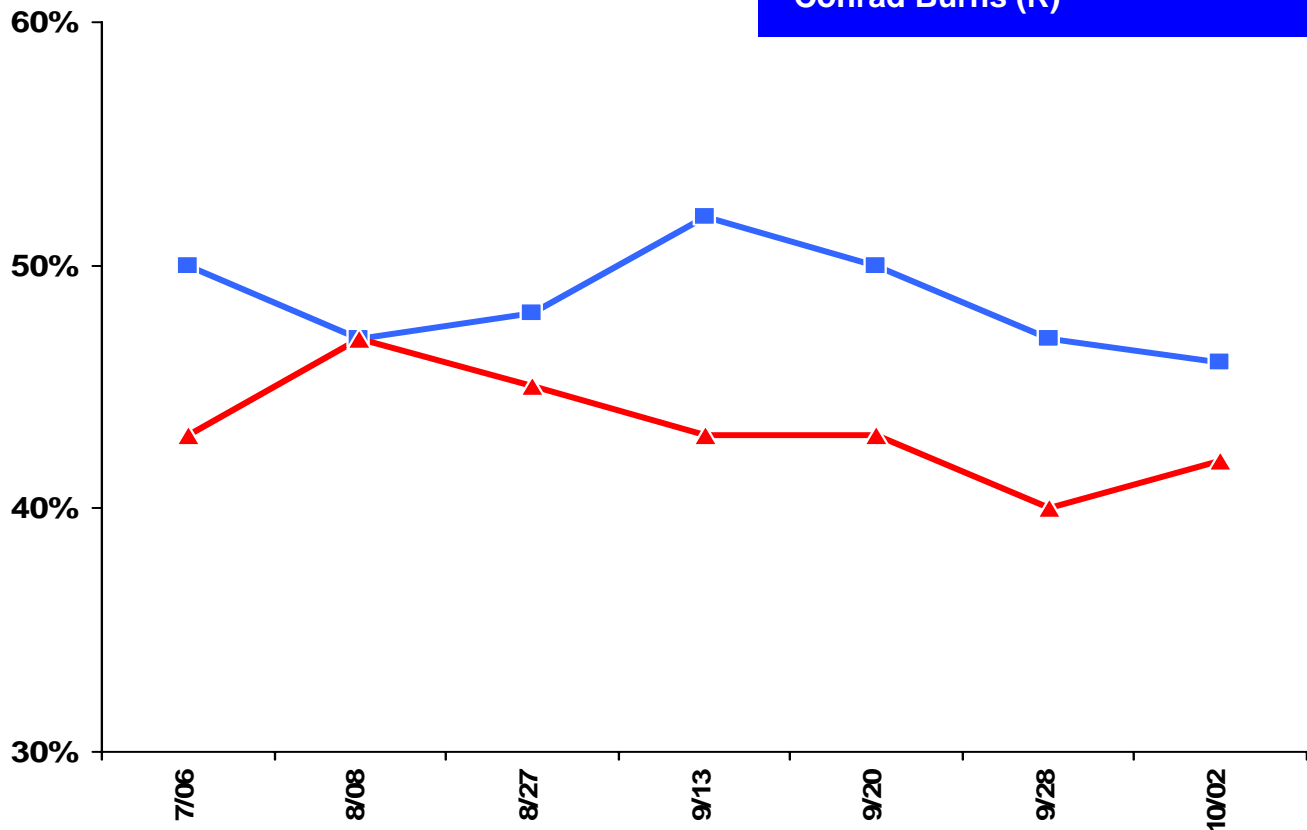
John Tester (D)



Conrad Burns (R)



LCG Average	Most Recent 3 Polls
John Tester (D)	48%
Conrad Burns (R)	42%



Election Monitor Senate Outlook: New Jersey

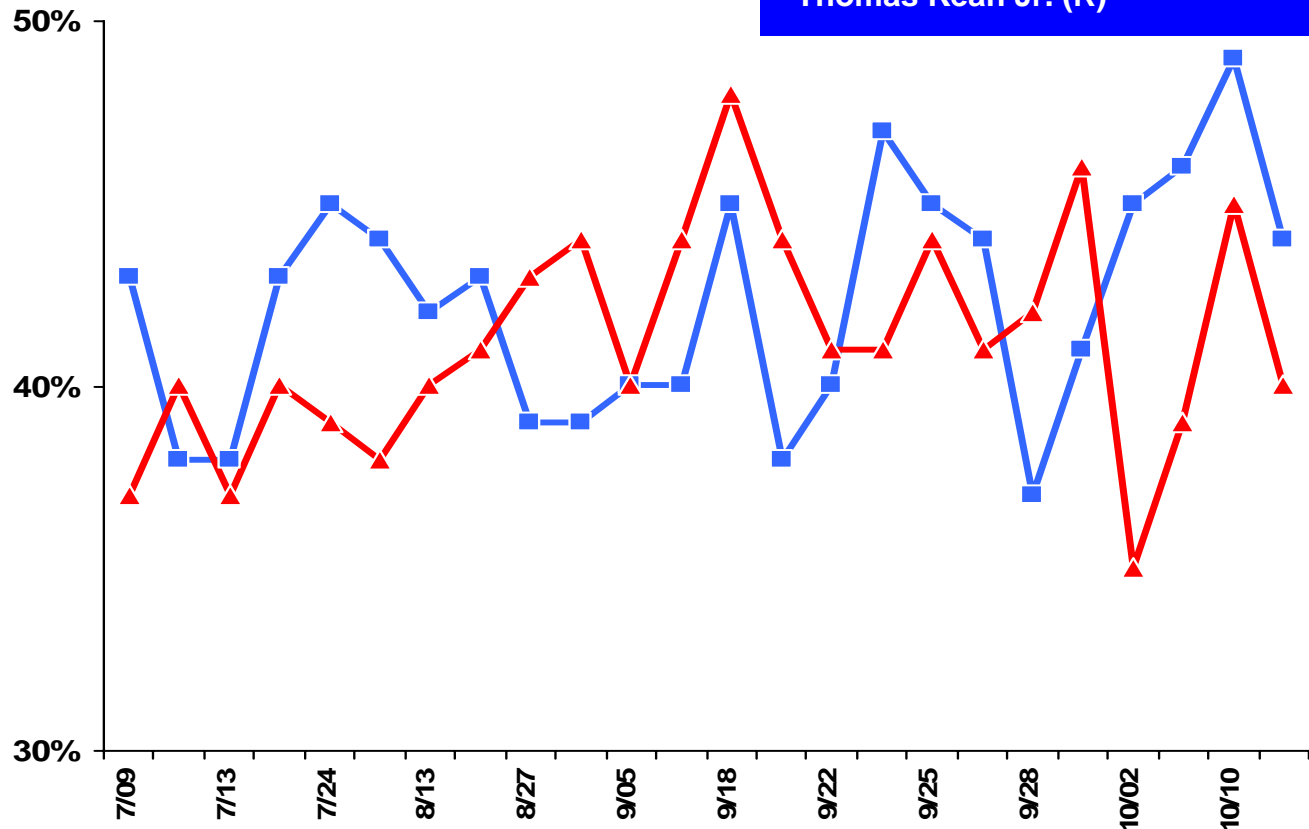


Bob Menendez (D)



Thomas Kean Jr. (R)

LCG Average	Most Recent 3 Polls
Bob Menendez (D)	46%
Thomas Kean Jr. (R)	41%



Election Monitor Senate Outlook: Ohio



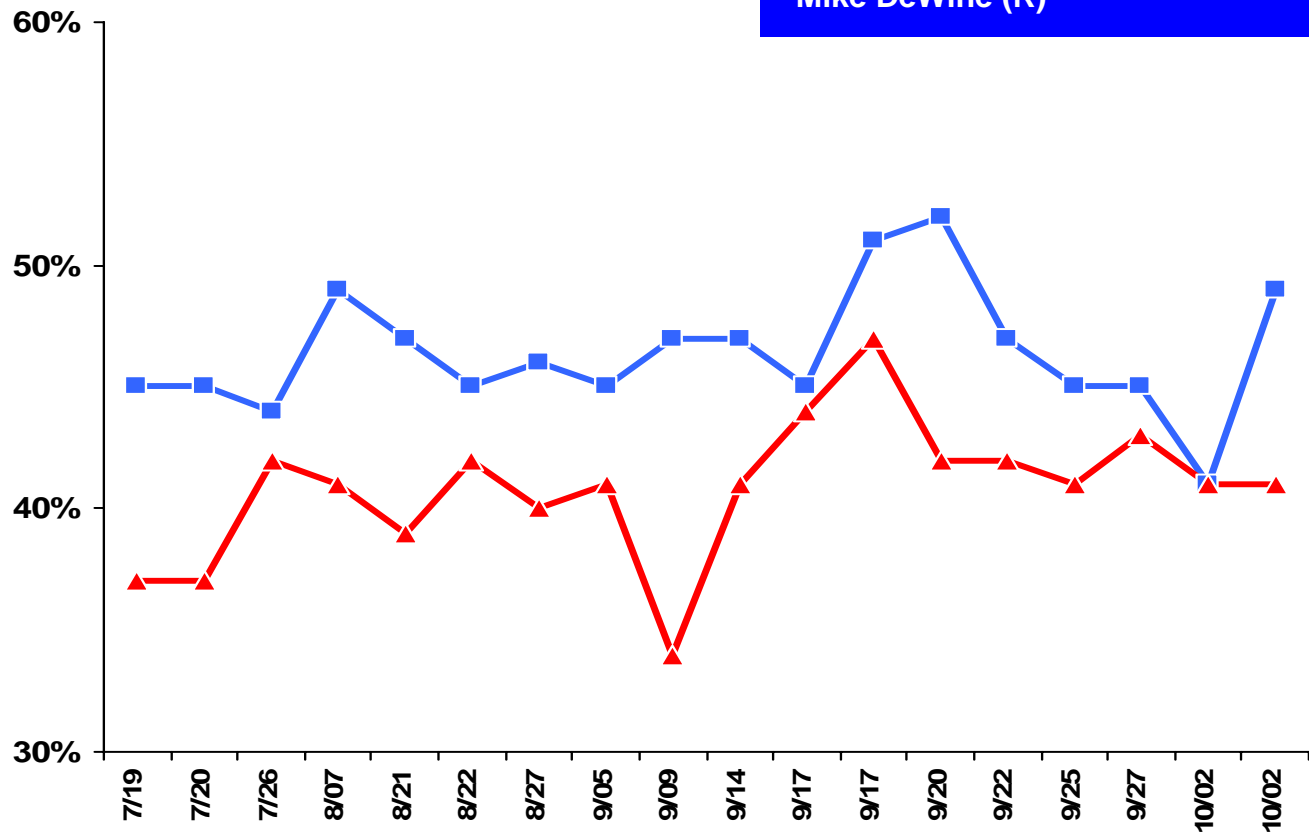
**Sherrod
Brown
(D)**



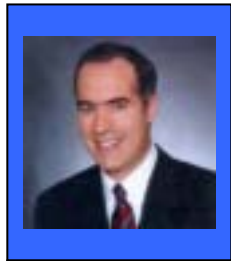
**Mike
DeWine (R)**



LCG Average	Most Recent 3 Polls
Sherrod Brown (D)	45%
Mike DeWine (R)	42%



Election Monitor Senate Outlook: Pennsylvania



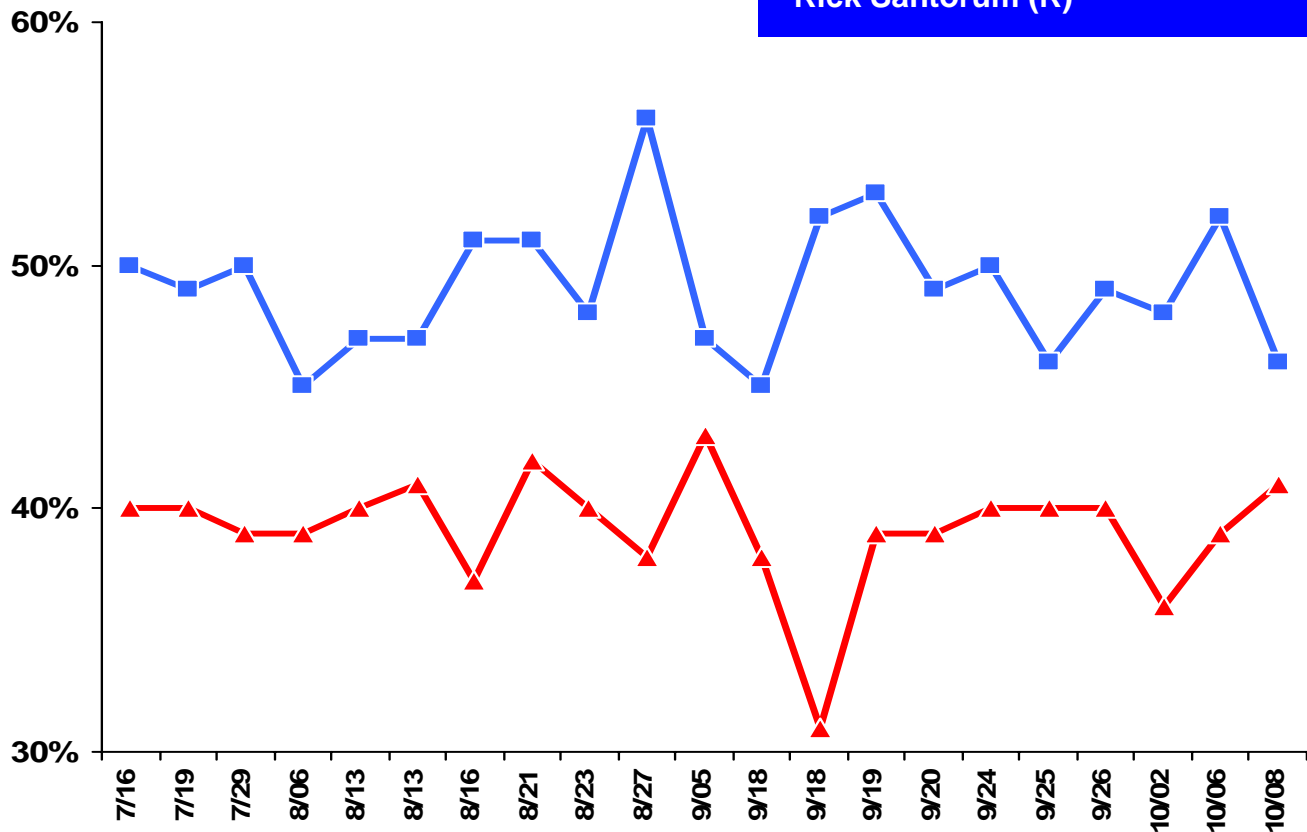
**Bob Casey Jr.
(D)**



**Rick Santorum
(R)**



LCG Average	Most Recent 3 Polls
Bob Casey Jr. (D)	49%
Rick Santorum (R)	39%



Election Monitor Senate Outlook: Rhode Island



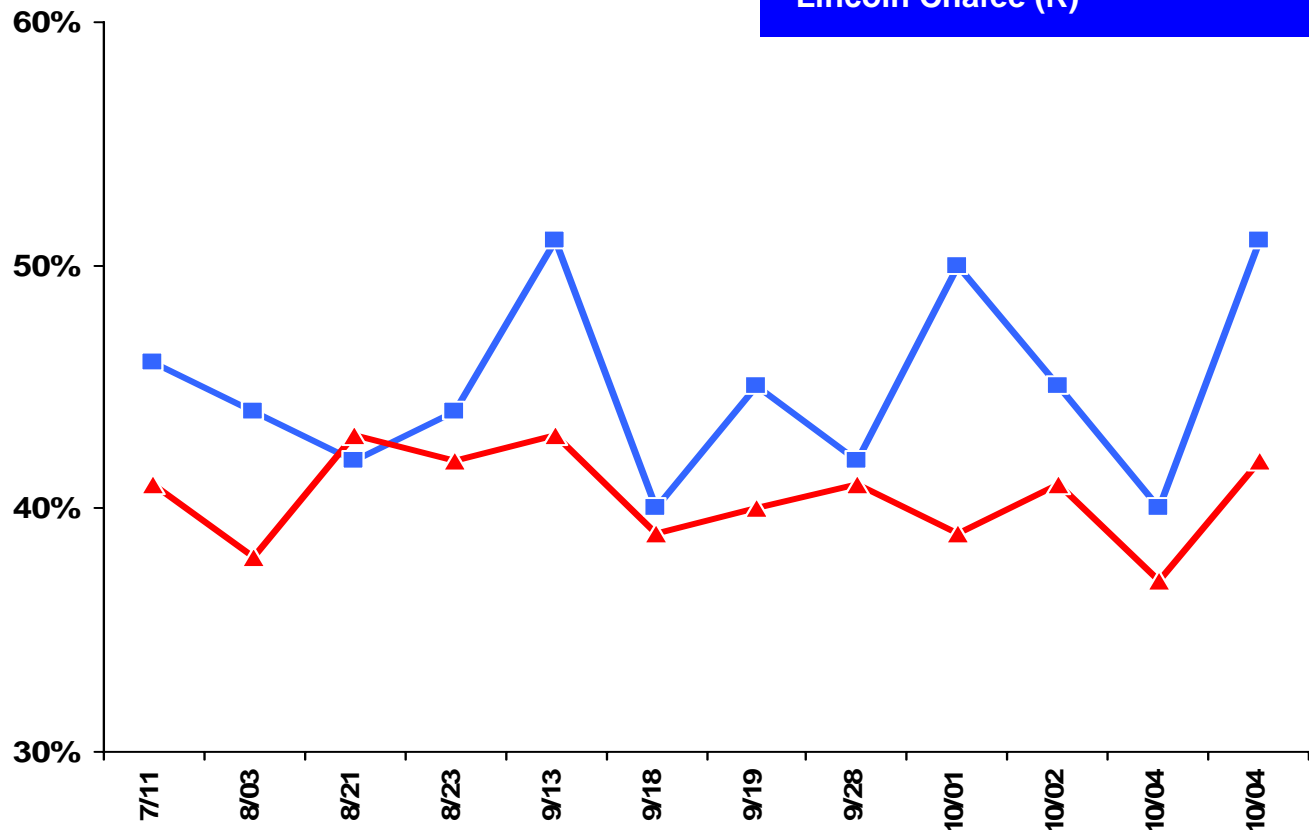
**Sheldon
Whitehouse
(D)**



**Lincoln
Chafee (R)**



LCG Average	Most Recent 3 Polls
Sheldon Whitehouse (D)	45%
Lincoln Chafee (R)	40%



Election Monitor Senate Outlook: Tennessee



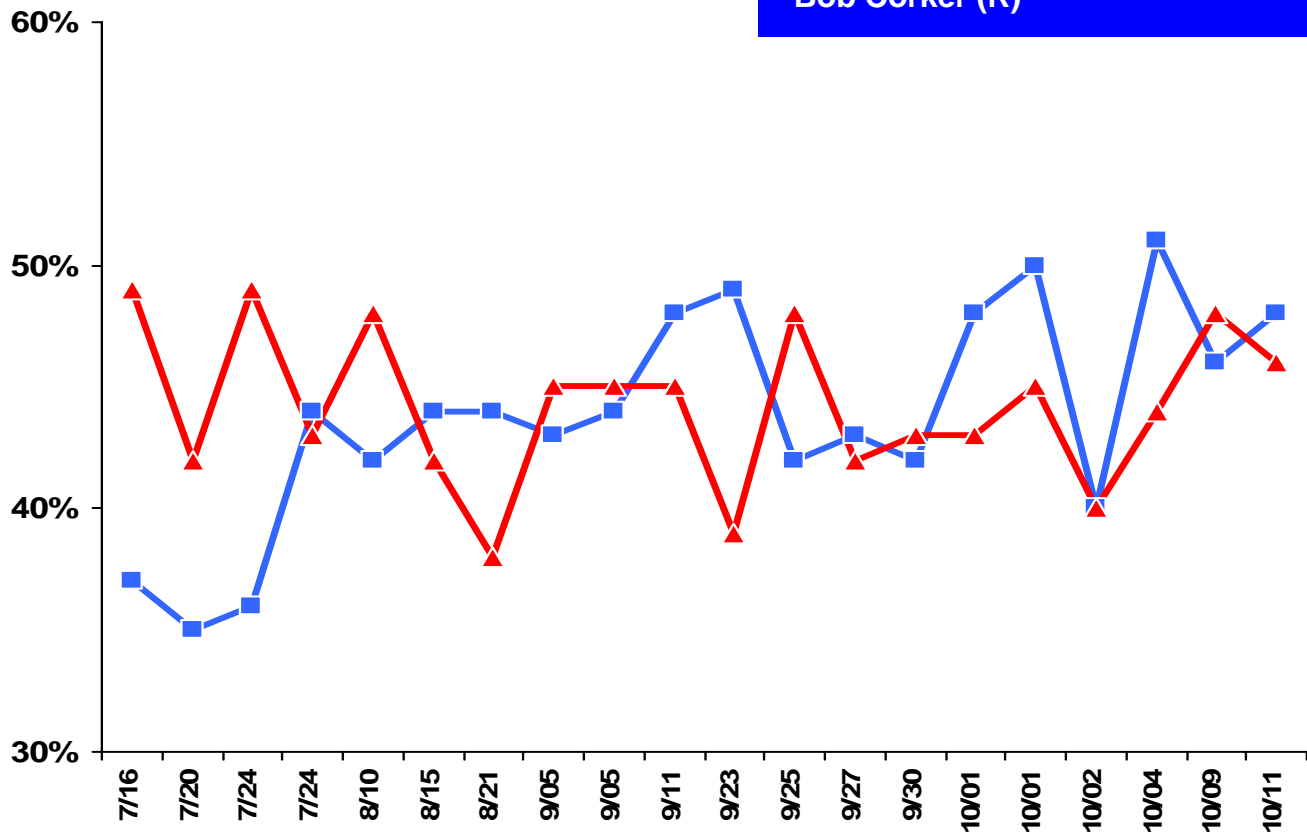
**Harold Ford Jr.
(D)**



**Bob Corker
(R)**



LCG Average	Most Recent 3 Polls
Harold Ford Jr. (D)	48%
Bob Corker (R)	46%



Election Monitor Senate Outlook: Virginia



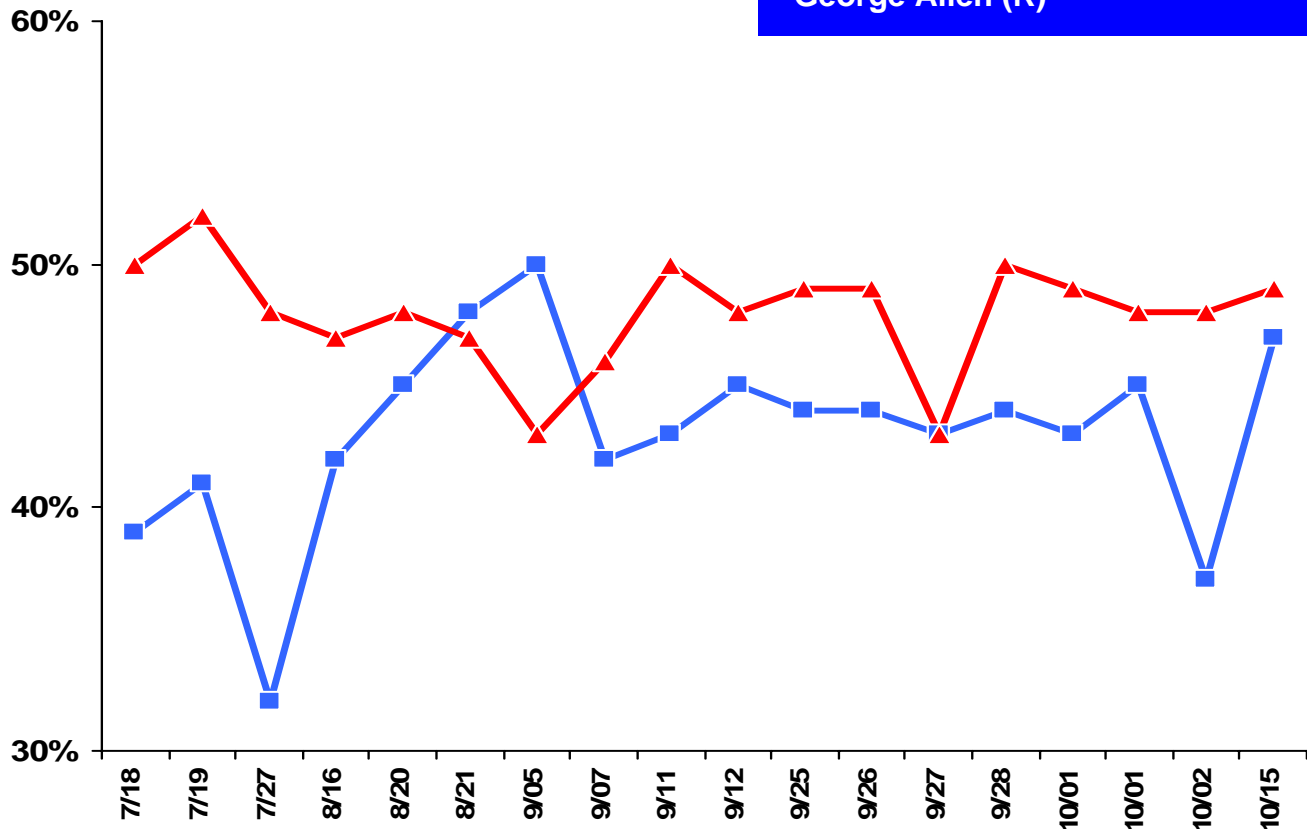
**Jim Webb
(D)**



**George
Allen (R)**



LCG Average	Most Recent 3 Polls
Jim Webb (D)	43%
George Allen (R)	48%



Election Monitor Senate Outlook

Democrats 43 (45*) Seats

Republicans 55 Seats

Lean Dem

Toss-Up

Lean GOP

Maryland

New Jersey

Virginia

Montana

Tennessee

Missouri

Pennsylvania

Ohio

Rhode Island

*45 seat tally includes Jim Jeffords (I-VT) and Joe Lieberman (CFL-CT) who currently caucus with Democrats

Lombardo Consulting Group

The LCG Election Monitor is a compilation and analysis of various publicly-available surveys pertaining to selected political and policy-related issues including but not limited to:

- ABC News/Washington Post
- American Research Group
- Associated Press/Ipsos
- CBS News
- CNN
- Fox News/Opinion Dynamics
- Gallup
- Annenberg Election Survey
- Newsweek
- The Pew Research Center
- Time
- USA Today

Data updated daily