

Lombardo Consulting Group

Election Monitor ©

A Compilation of Publicly-Available Survey Data

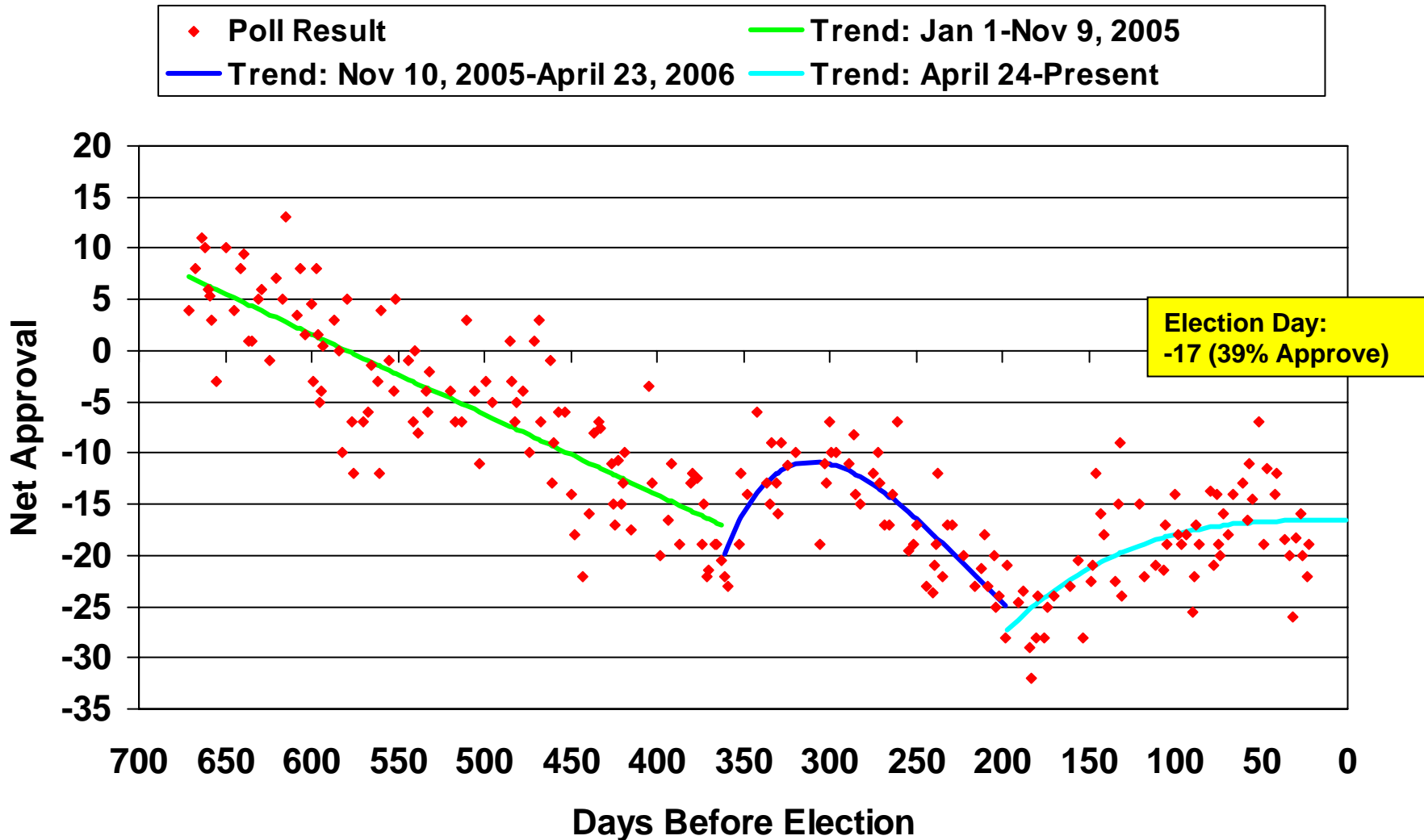
January 1st, 2005 - Present

Lombardo Consulting Group
1850 M Street NW
Suite 430
Washington DC 20036
www.lombardoconsultinggroup.com

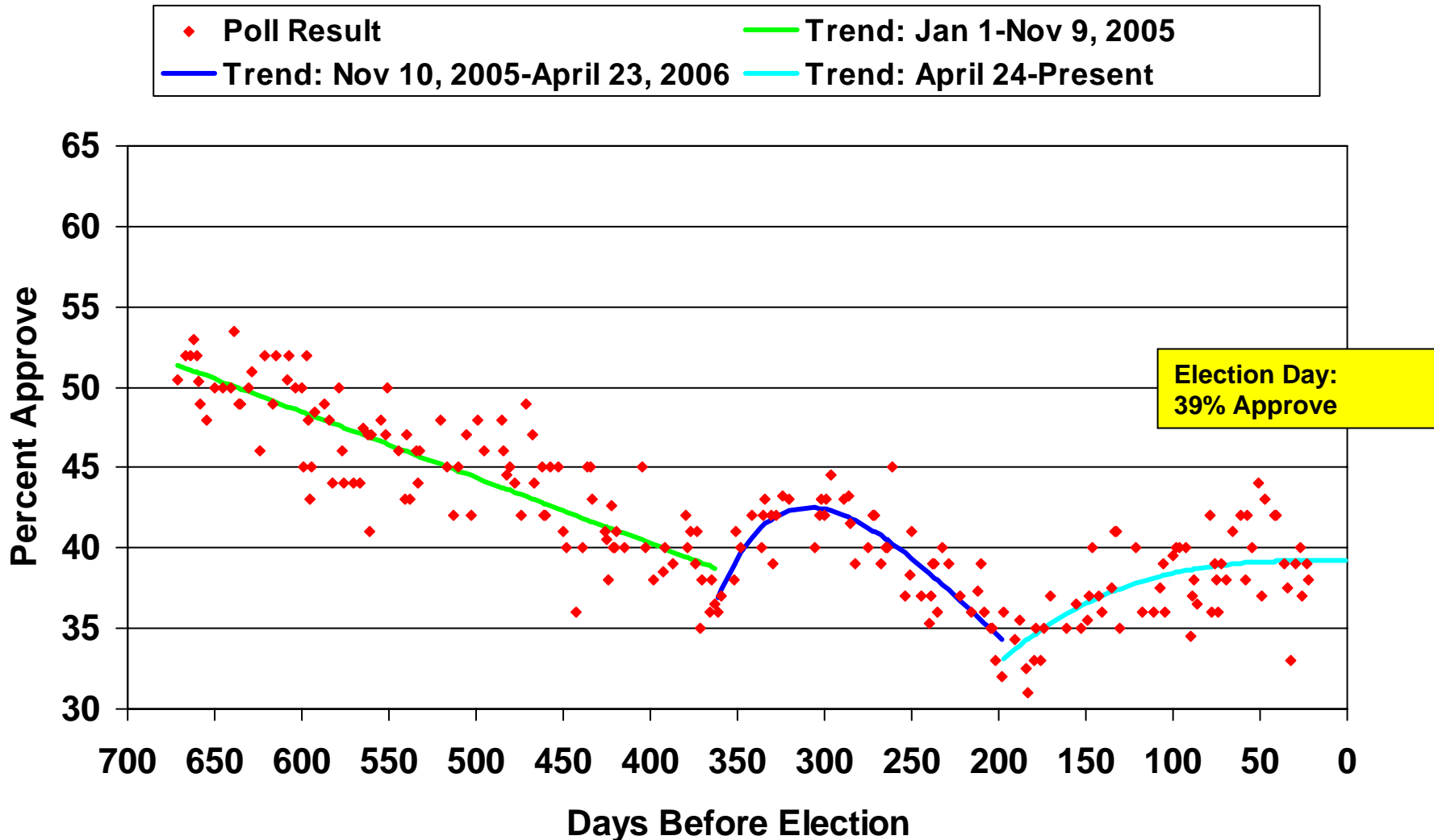
Net Trend to Bush Job Approval

2005-2006

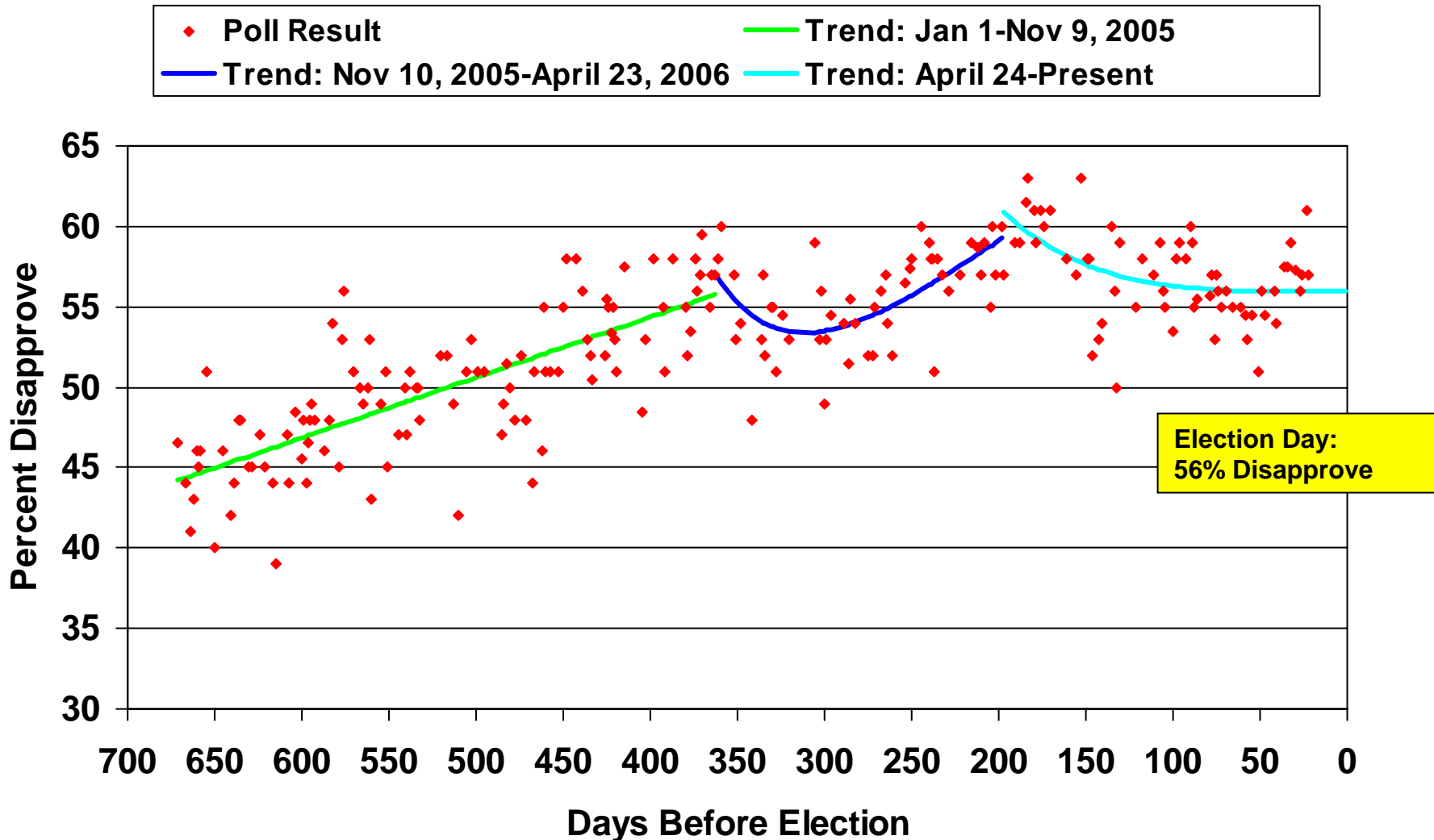
(% approve - % disapprove)



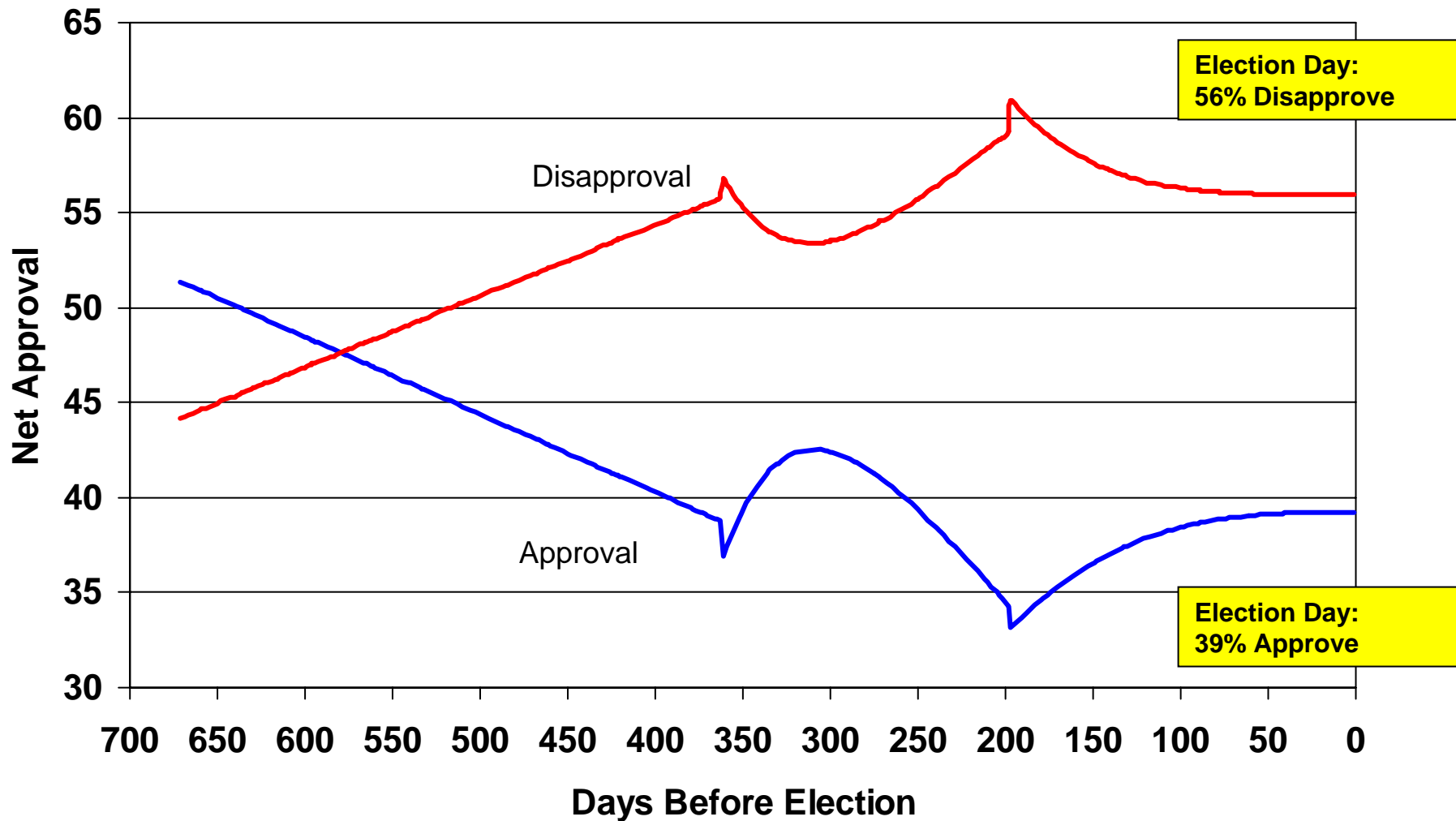
Trend to Bush Job Approval 2005-2006



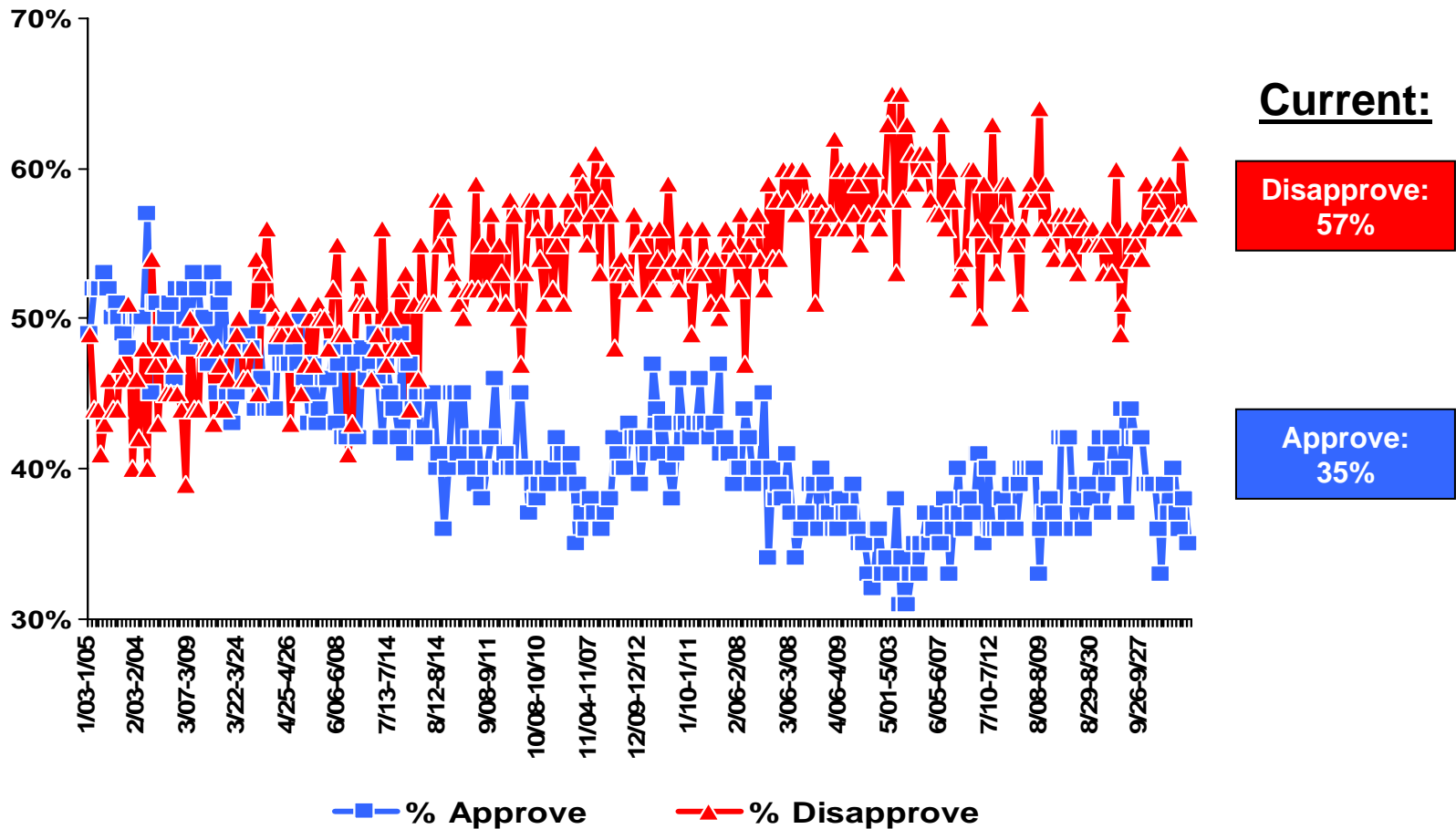
Trend to Bush Job Disapproval 2005-2006



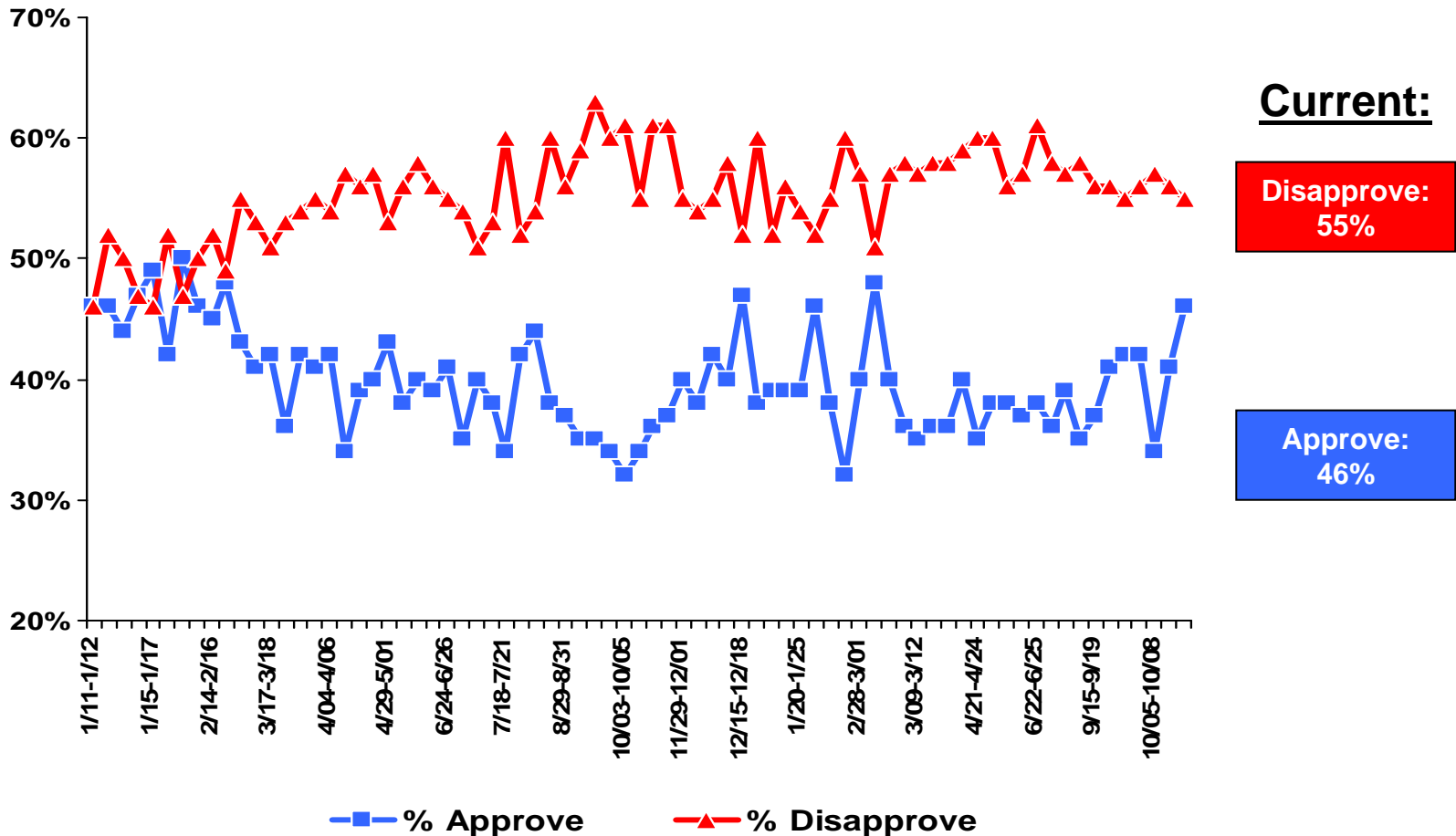
Trend to Bush Job Performance 2005-2006



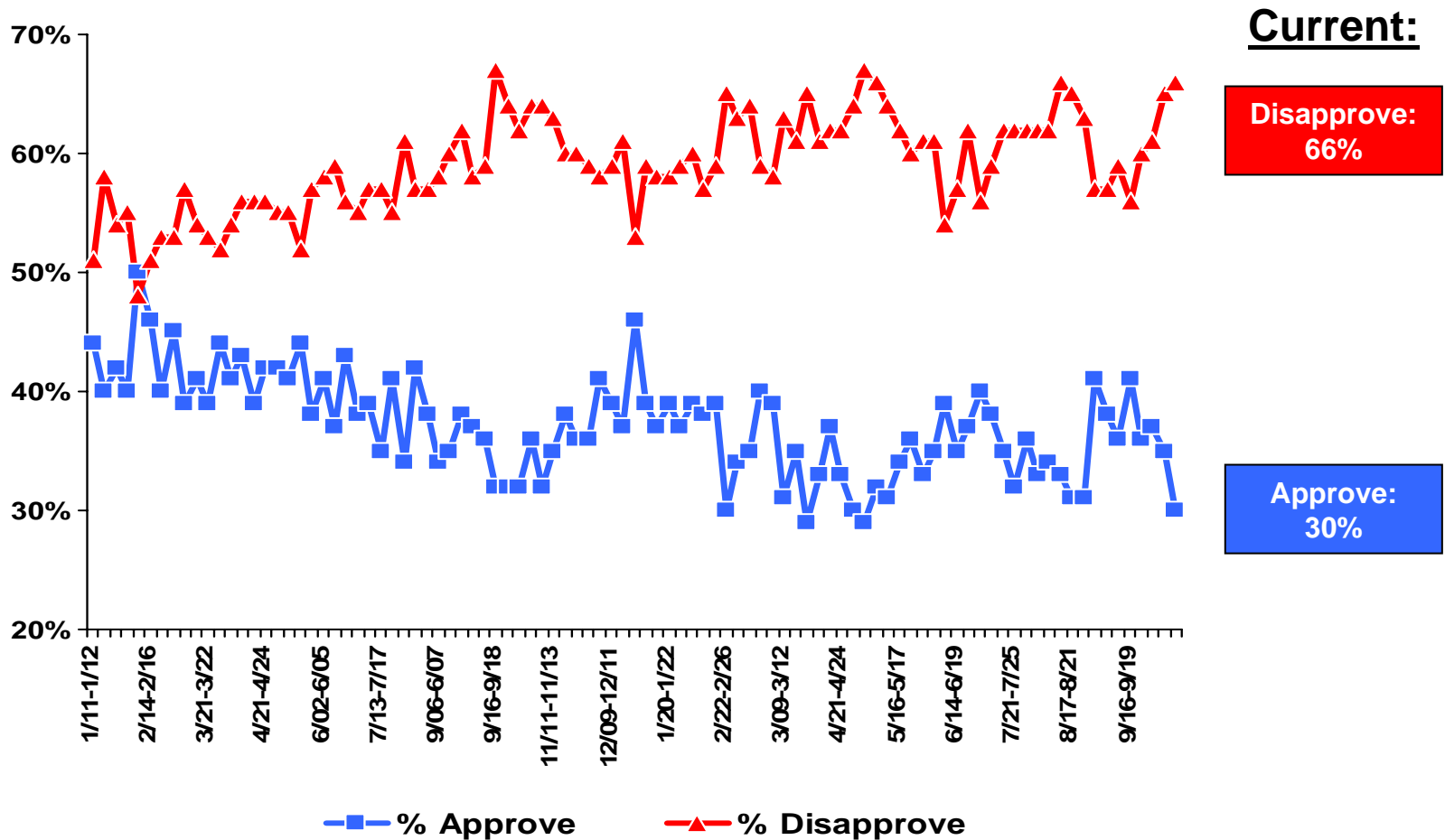
George W. Bush Job Approval Rating



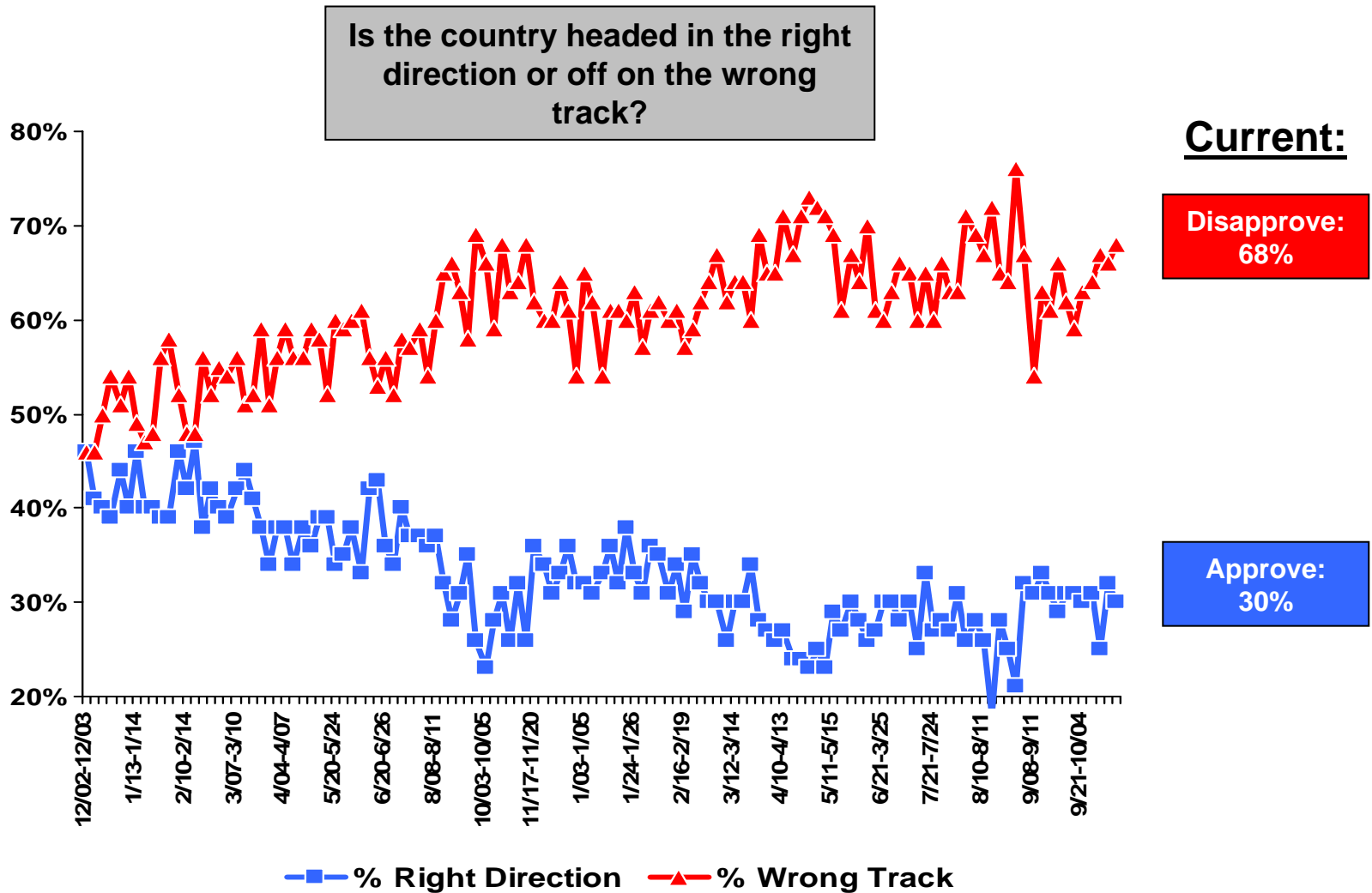
The Economy: George W. Bush Job Approval Rating



War in Iraq: George W. Bush Job Approval Rating



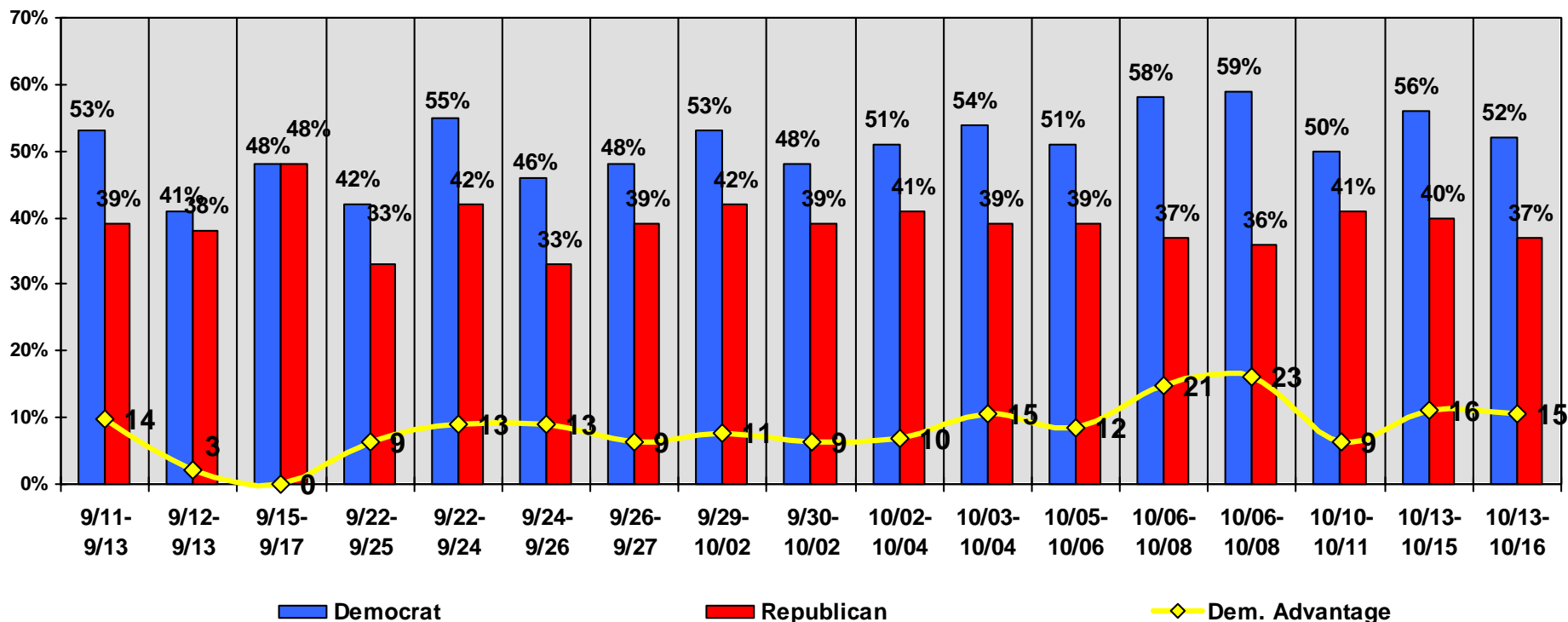
Direction of the Country



Election Monitor Perspective: Generic Congressional Ballot—Likely Voters

If the election for Congress were held today, would you vote for the Democratic candidate or the Republican candidate from your district?

Gallup, Fox, Zogby, AP-Ipsos, CNN, USA Today, Newsweek, Time Surveys



Unless otherwise noted all surveys sample "Likely Voters"

Election Monitor Perspective: The Churchgoing Vote in 2006 Part II

Generic Congressional Ballot

Net Republican Vote

Percent Voting Republican Minus Percent Voting Democratic
(Among Likely Voters)

Newsweek Survey
10/19-10/20
n=1000 Adults

	Republican Candidate	Democratic Candidate	Net Republican Candidate
White, Evangelical (born-again) Protestant	60%	31%	+29
White, Catholic	42%	44%	-2

2004 Exit Poll Data (By Race & Religion)

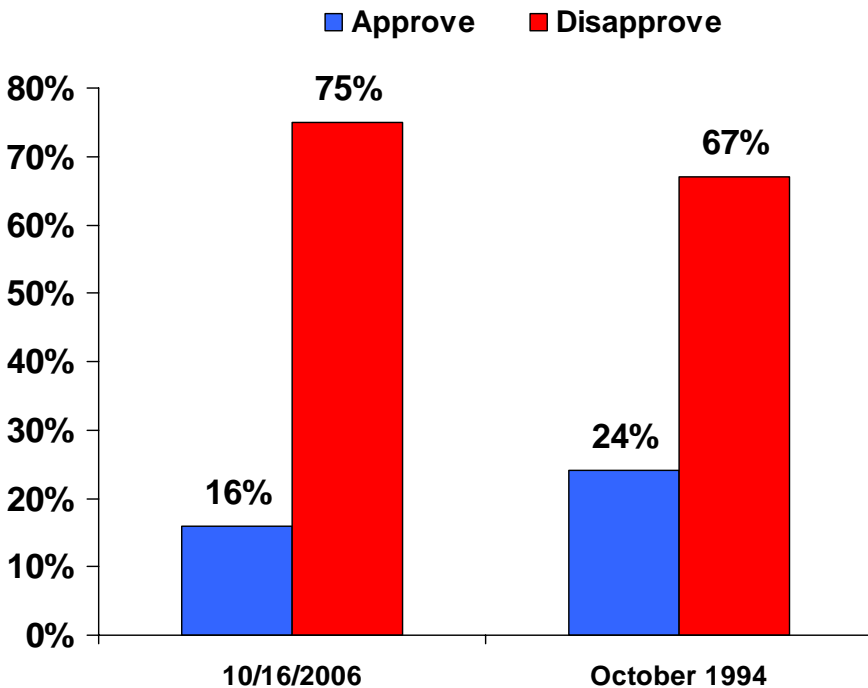
	Bush	Kerry	Net Bush
White Evangelical (born-again) Protestant	78%	21%	+54
White Catholic	56%	43%	+13

Election Monitor Perspective: The House 2006

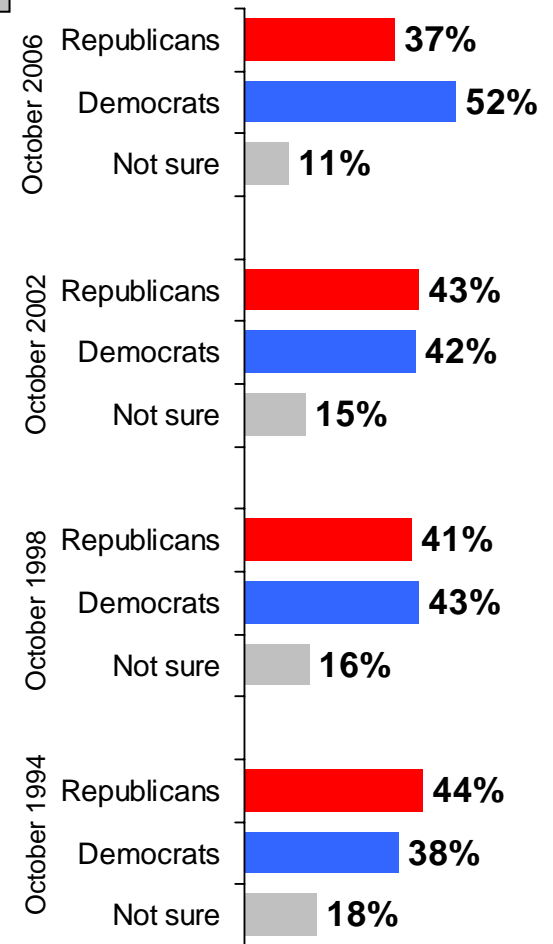
Do you approve or disapprove of the job that Congress is doing?

NBC/WSJ Survey
10/13-10/16
n=1006 RV

NBC/WSJ Survey
10/13-10/16
n=1006 RV



What is your preference for the outcome of this year's congressional elections—a congress controlled by Republicans, or a congress controlled by Democrats?



LCG Election Monitor

**Senate Outlook
2006**

Election Monitor Senate Outlook: Maryland



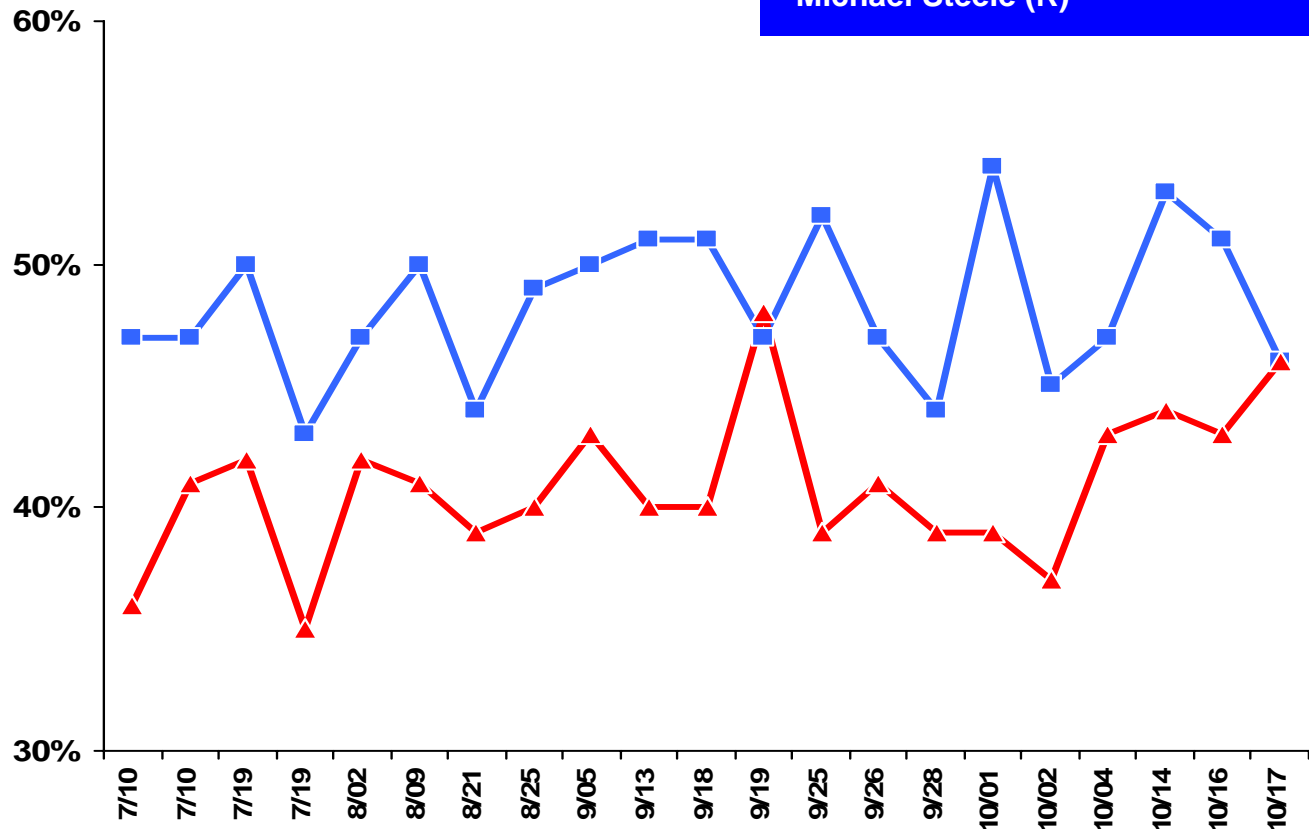
**Ben Cardin
(D)**



**Michael
Steele (R)**



LCG Average	Most Recent 3 Polls
Ben Cardin (D)	50%
Michael Steele (R)	44%



Election Monitor Senate Outlook: Missouri



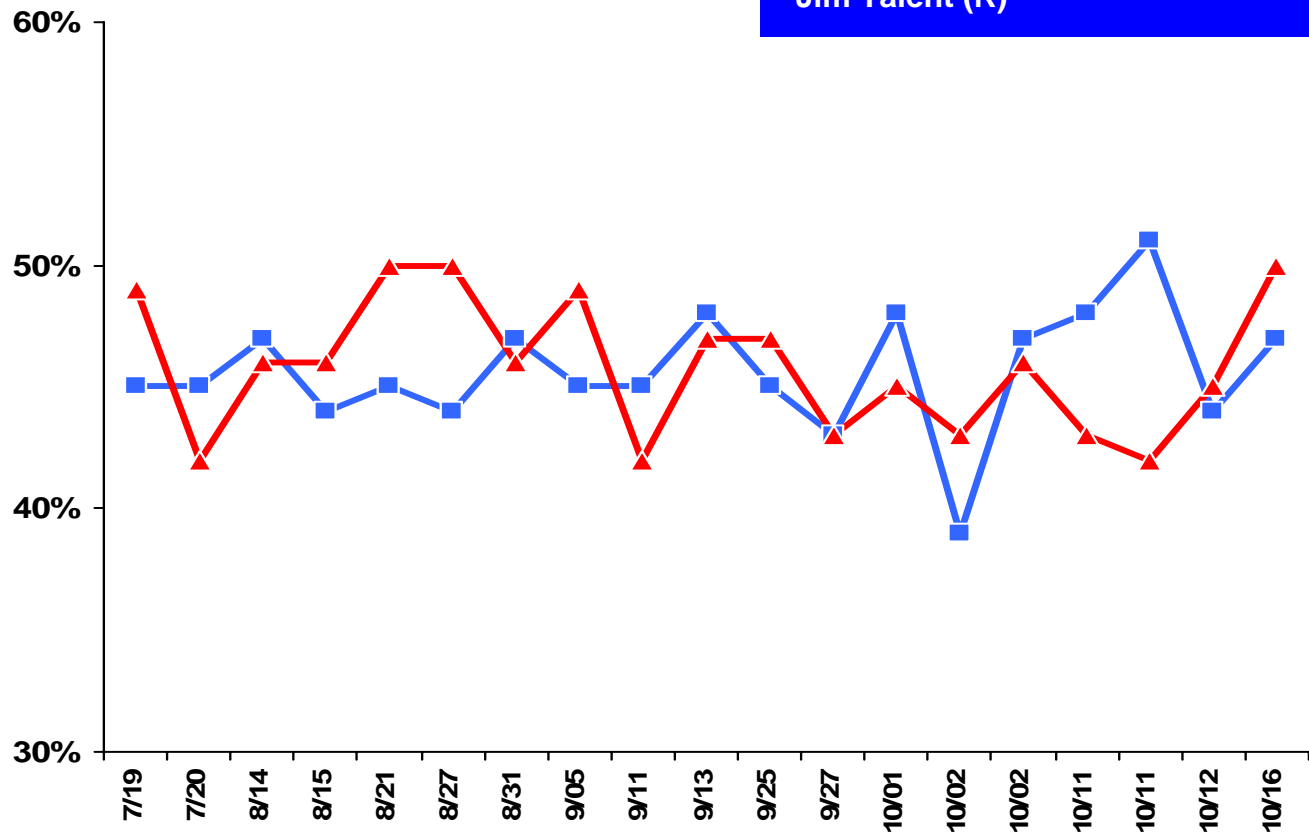
Claire McCaskill (D)



Jim Talent (R)



LCG Average	Most Recent 3 Polls
Claire McCaskill (D)	47%
Jim Talent (R)	46%



Election Monitor Senate Outlook: Montana



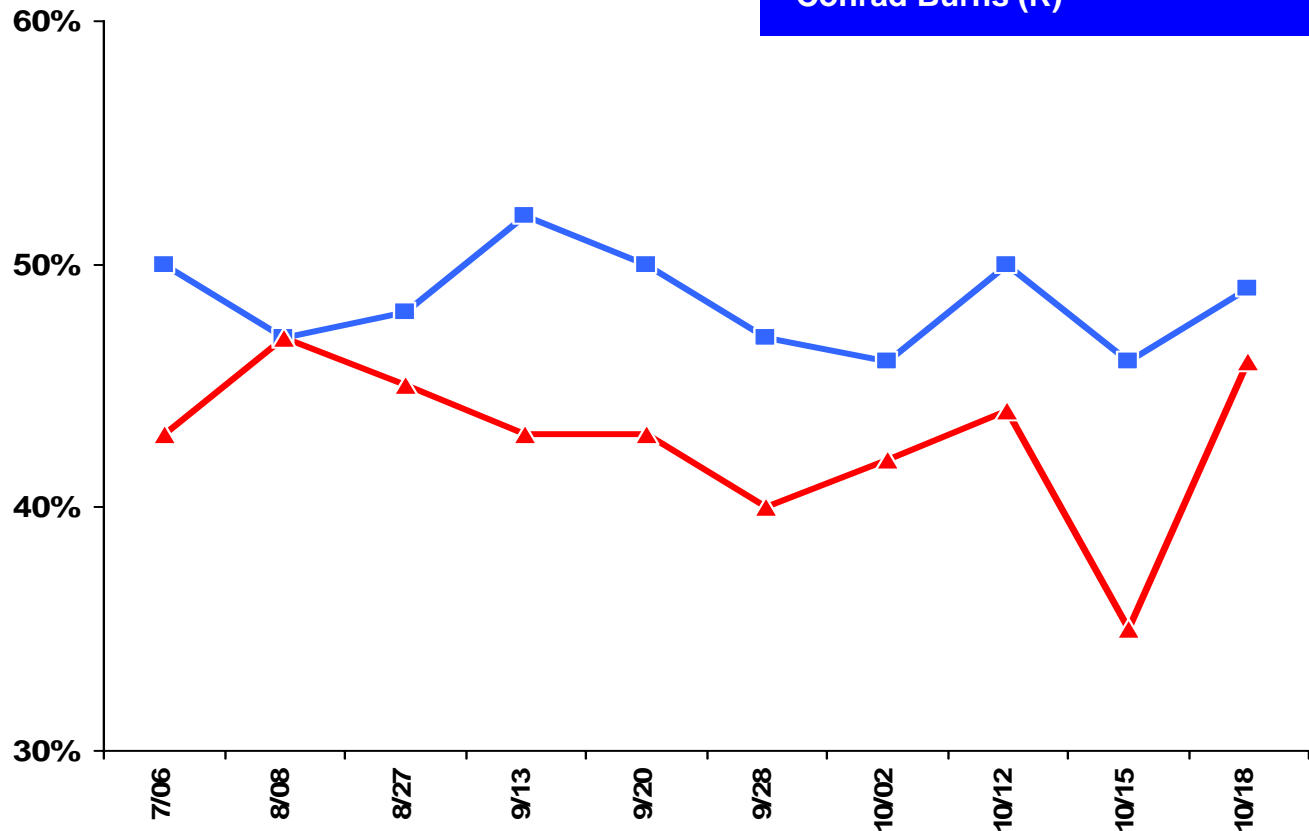
John Tester (D)



Conrad Burns (R)



LCG Average	Most Recent 3 Polls
John Tester (D)	48%
Conrad Burns (R)	42%



Election Monitor Senate Outlook: New Jersey

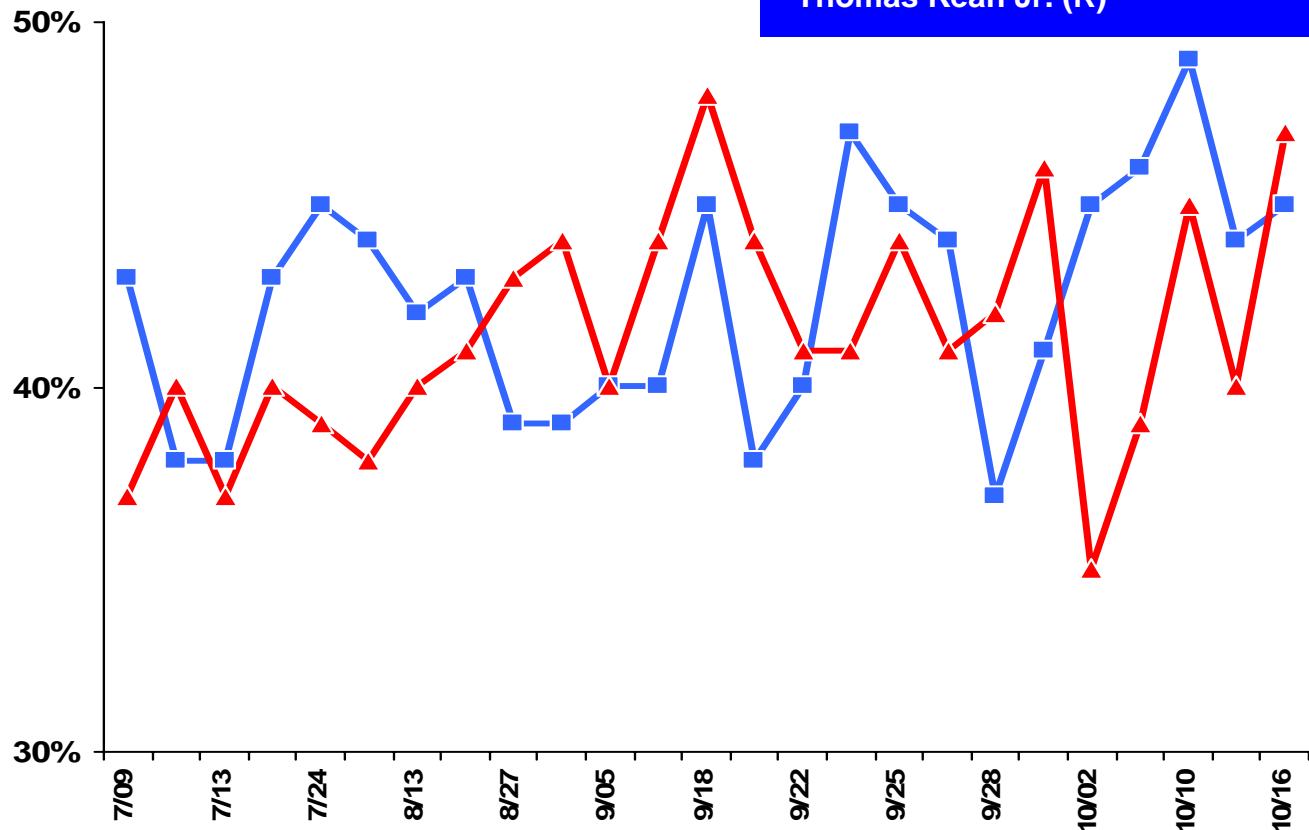


Bob Menendez (D)



Thomas Kean Jr. (R)

LCG Average	Most Recent 3 Polls
Bob Menendez (D)	46%
Thomas Kean Jr. (R)	44%



Election Monitor Senate Outlook: Ohio



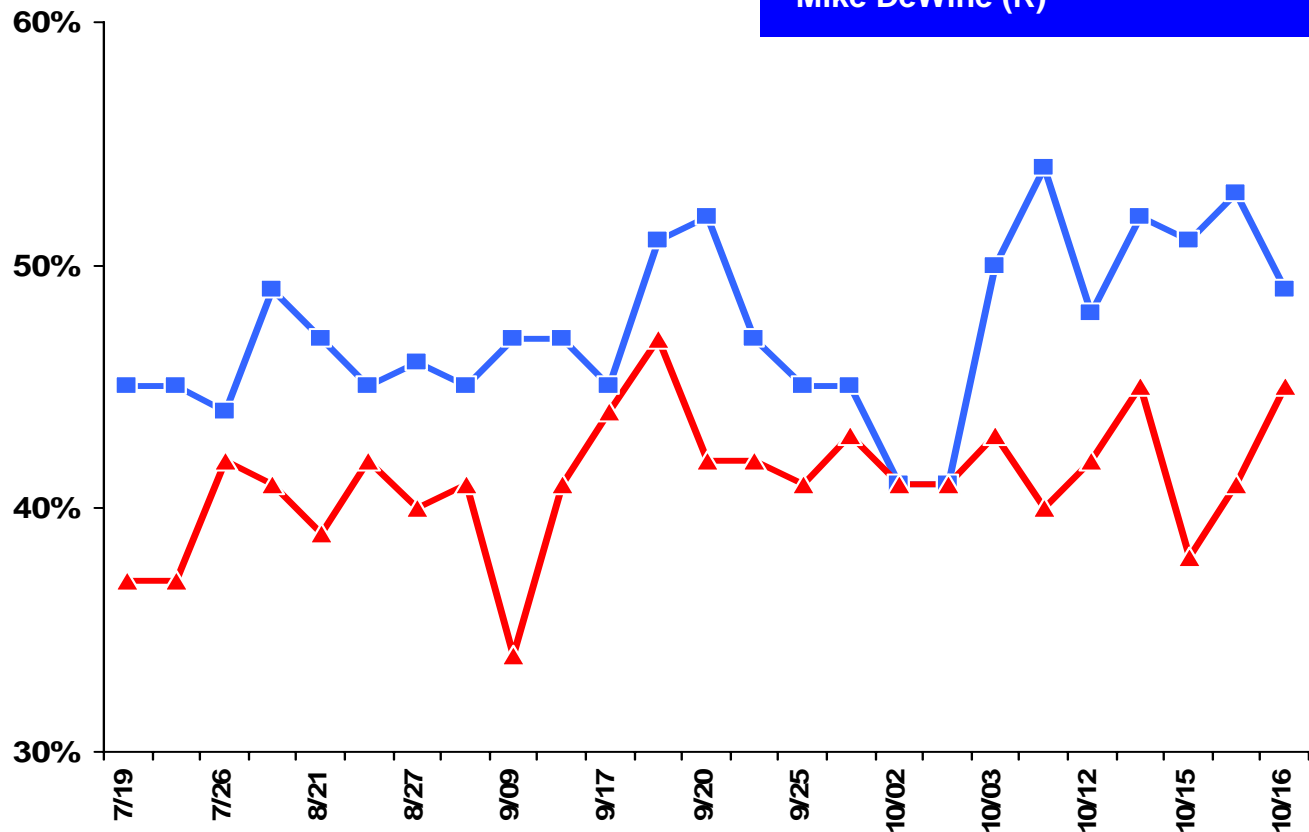
**Sherrod
Brown
(D)**



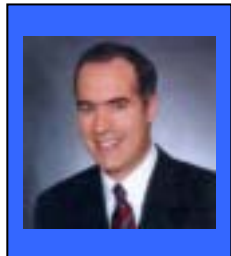
**Mike
DeWine (R)**



LCG Average	Most Recent 3 Polls
Sherrod Brown (D)	51%
Mike DeWine (R)	41%



Election Monitor Senate Outlook: Pennsylvania



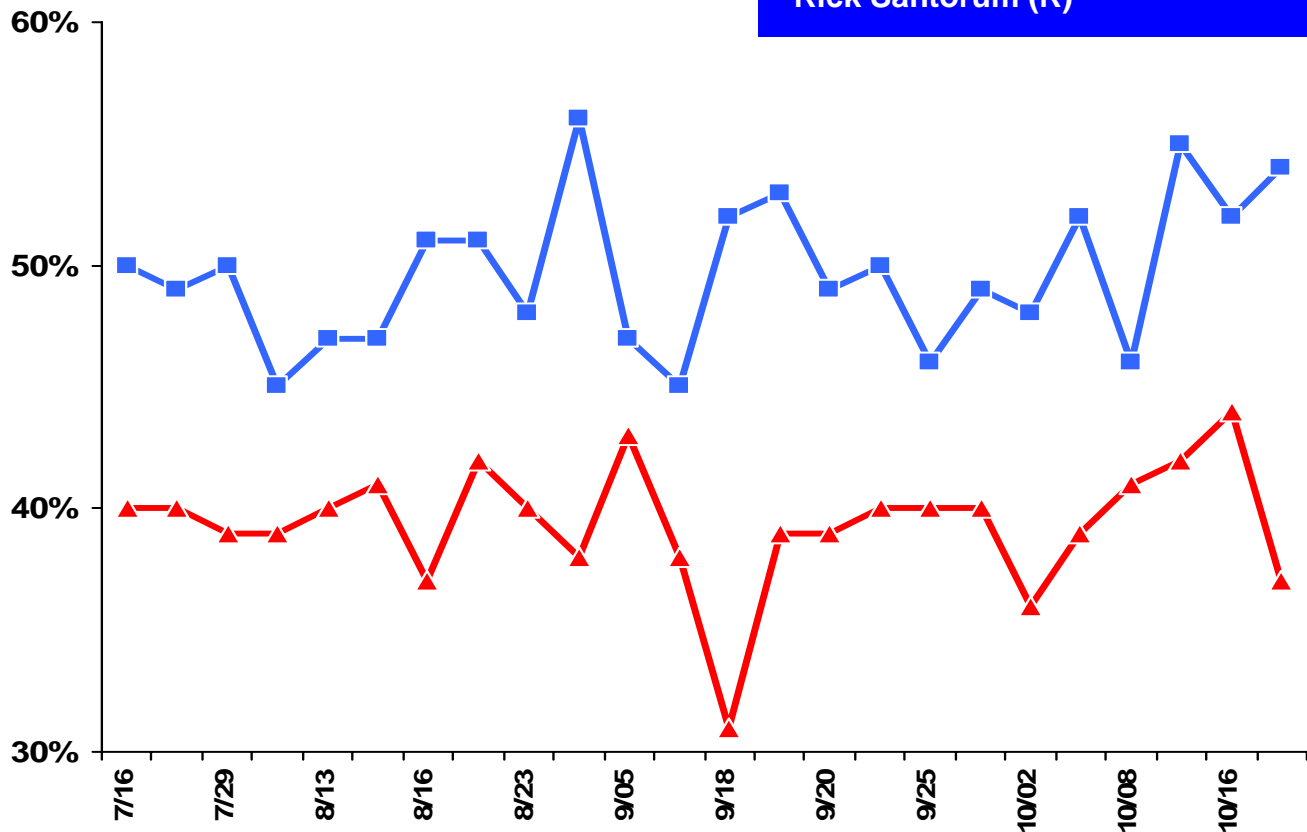
**Bob Casey Jr.
(D)**



**Rick Santorum
(R)**



LCG Average	Most Recent 3 Polls
Bob Casey Jr. (D)	54%
Rick Santorum (R)	41%



Election Monitor Senate Outlook: Rhode Island



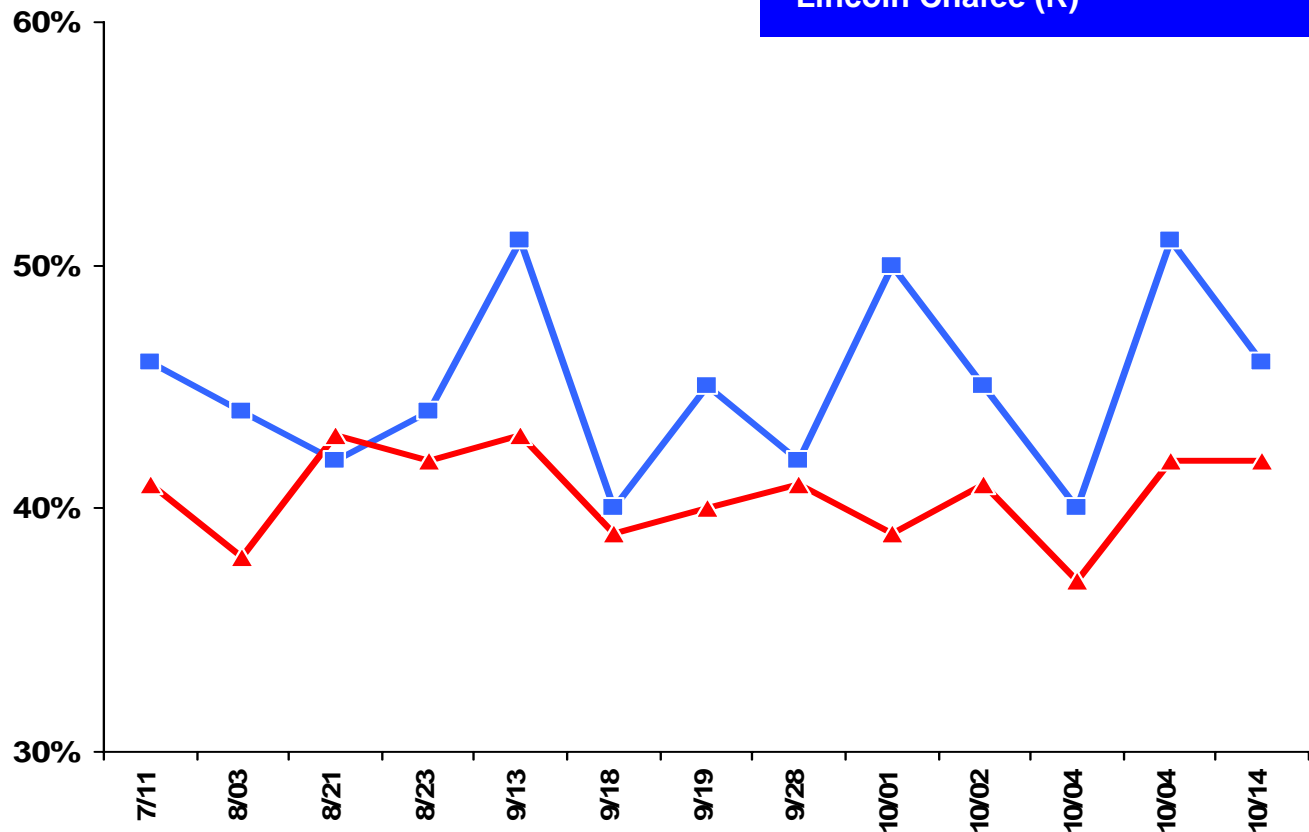
Sheldon Whitehouse (D)



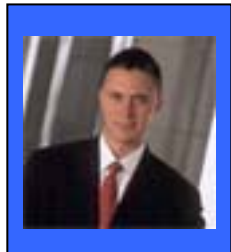
Lincoln Chafee (R)



LCG Average	Most Recent 3 Polls
Sheldon Whitehouse (D)	46%
Lincoln Chafee (R)	40%



Election Monitor Senate Outlook: Tennessee



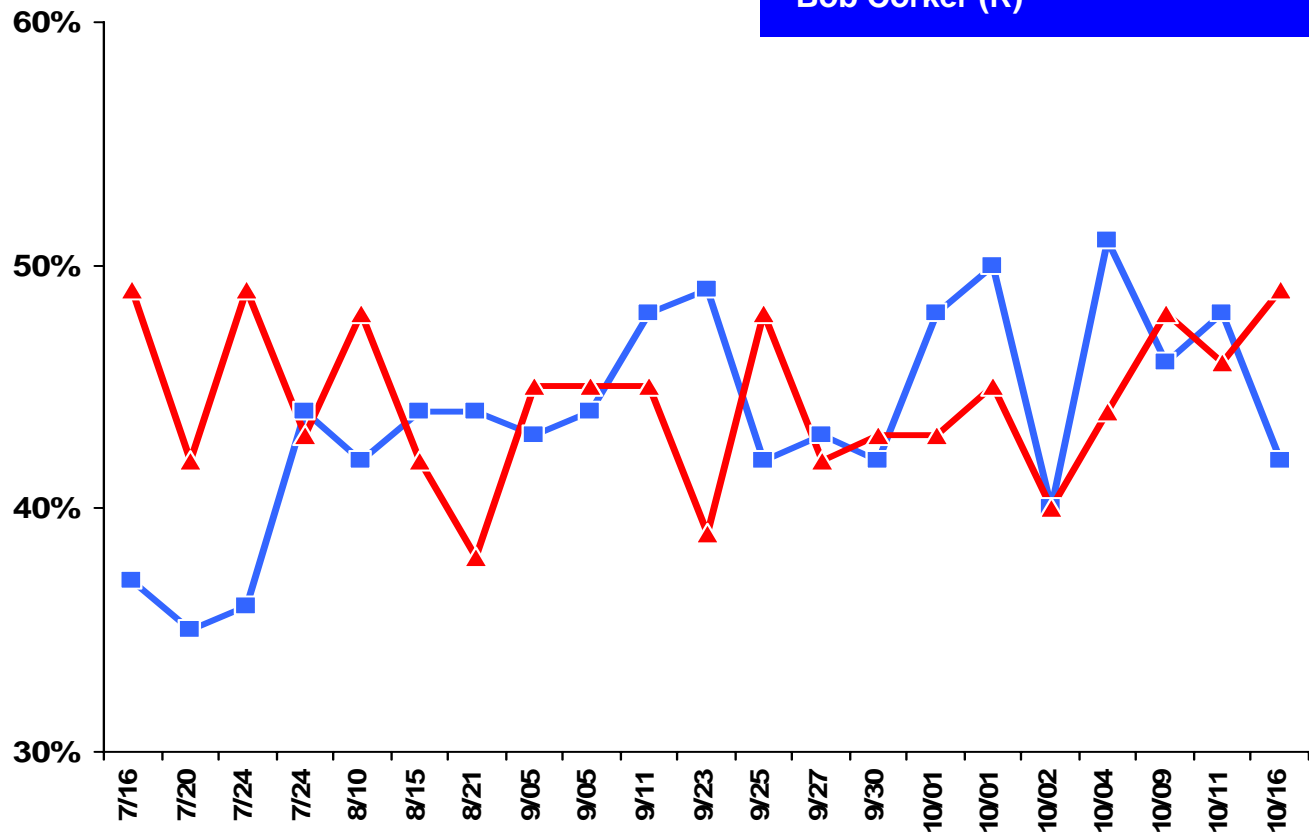
Harold Ford Jr.
(D)



Bob Corker
(R)



LCG Average	Most Recent 3 Polls
Harold Ford Jr. (D)	45%
Bob Corker (R)	48%



Election Monitor Senate Outlook: Virginia

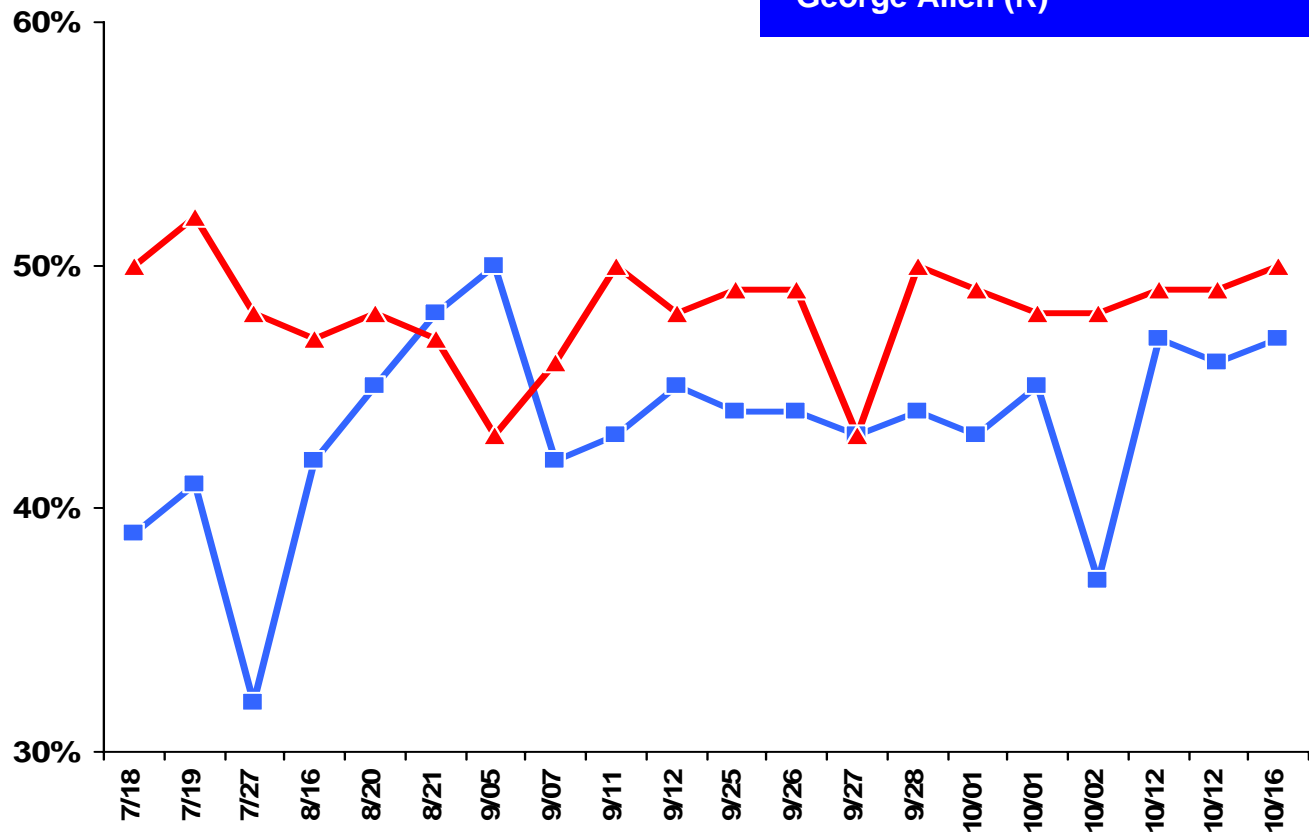


**Jim Webb
(D)**



**George
Allen (R)**

LCG Average	Most Recent 3 Polls
Jim Webb (D)	47%
George Allen (R)	49%



Election Monitor Senate Outlook

Democrats 43 (45*) Seats

Republicans 55 Seats

Lean Dem

Toss-Up

Lean GOP

Maryland

New Jersey

Virginia

Montana

Tennessee

Missouri

Pennsylvania

Ohio

Rhode Island

*45 seat tally includes Jim Jeffords (I-VT) and Joe Lieberman (CFL-CT) who currently caucus with Democrats

Lombardo Consulting Group

The LCG Election Monitor is a compilation and analysis of various publicly-available surveys pertaining to selected political and policy-related issues including but not limited to:

- ABC News/Washington Post
- American Research Group
- Associated Press/Ipsos
- CBS News
- CNN
- Fox News/Opinion Dynamics
- Gallup
- Annenberg Election Survey
- Newsweek
- The Pew Research Center
- Time
- USA Today

Data updated daily