

Lombardo Consulting Group

# Election Monitor ©

---

**A Compilation of Publicly-Available Survey Data**

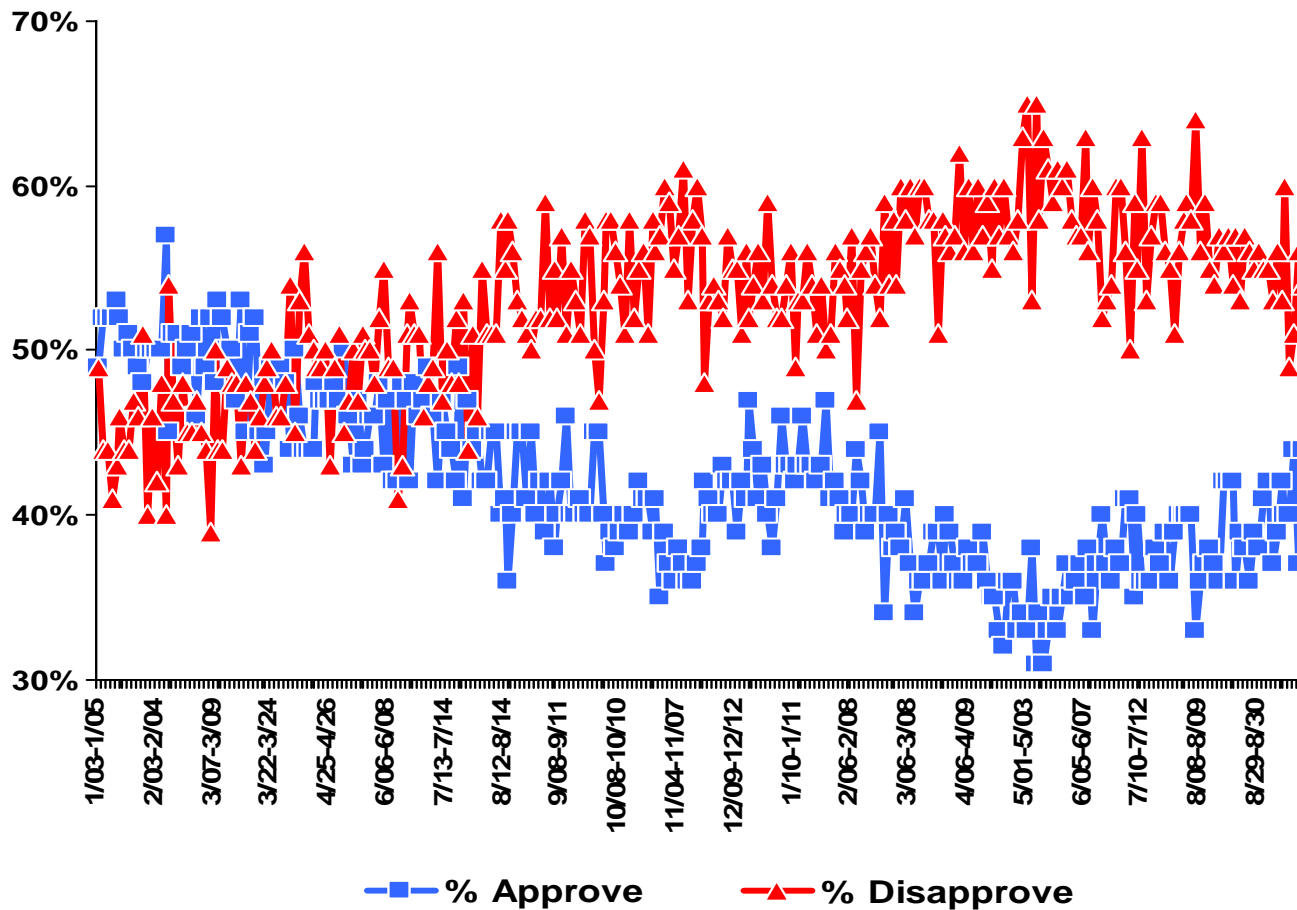
**January 1<sup>st</sup>, 2005 - Present**

Lombardo Consulting Group  
1850 M Street NW  
Suite 430  
Washington DC 20036  
[www.lombardoconsultinggroup.com](http://www.lombardoconsultinggroup.com)

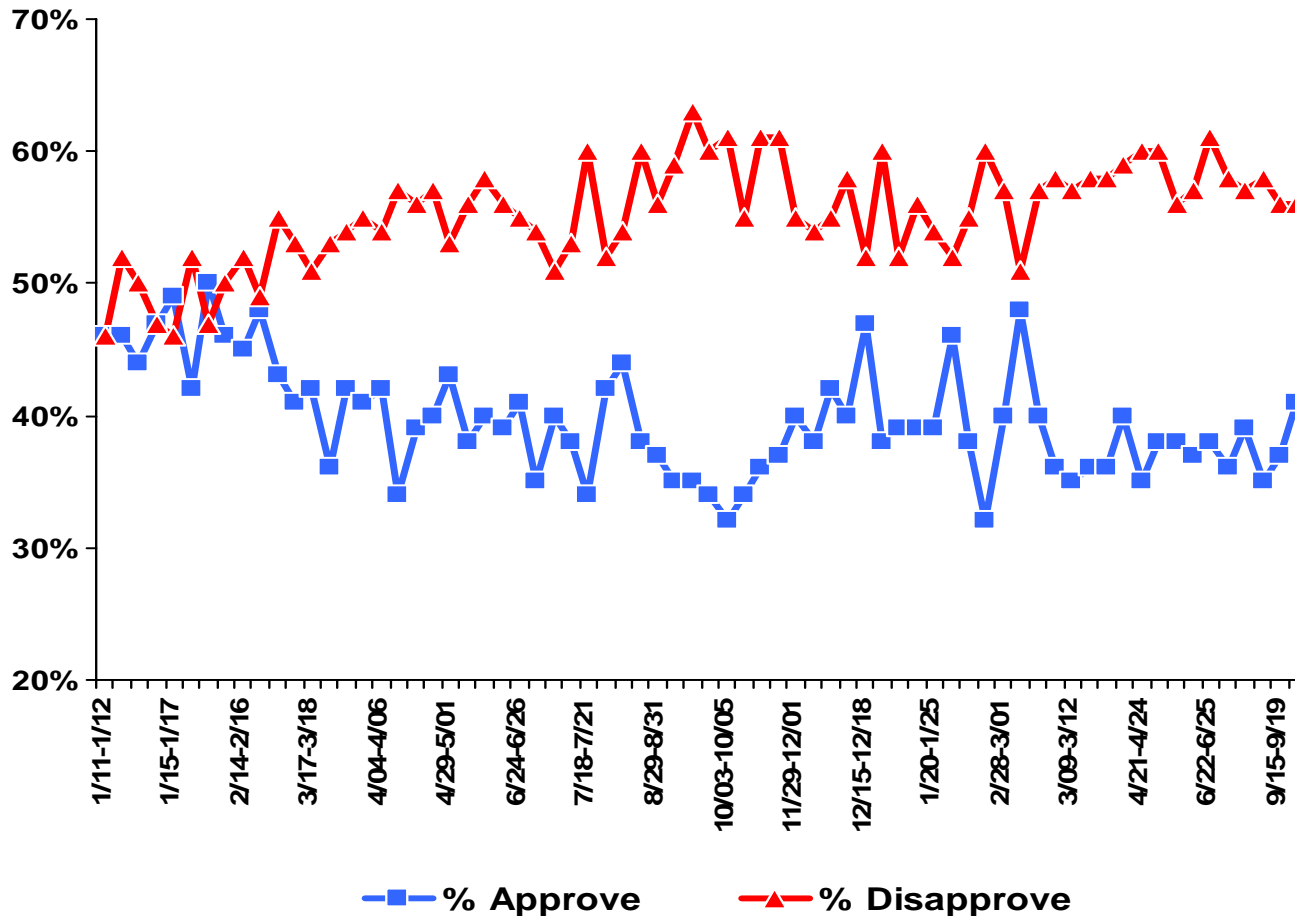
## Executive Summary

- **Toxic Cleanup?** The President and his Party have rebounded in the past week to bounce back from what had been several months of “toxic” looking poll numbers. The President’s job approval rating is currently at approximately 44%, his highest in a major national poll since February.
- **Generic Congressional Ballot.** After trailing consistently (and significantly) in the Generic Congressional Ballot question, new data this week show that Republicans and Democrats are tied at 48% among likely voters as to which candidate voters would elect from their districts. For Democrats, the USA Today/Gallup survey indicated a -9 point swing in GCB preference between registered and likely voters. Other surveys this week have shown consistent Democratic leads in GCB among registered voters.
- **Issues and the Parties.** Iraq (27%) and Terrorism (19%) are seen as the most important issues in the 2006 midterm elections. As it stands, Americans favor the Democratic Party over the Republicans on the issue of Iraq. The GOP is preferred over the Democrats by 9 percentage-points in the campaign against terrorism.
- **Outlook 2008.** Preliminary Republican horserace numbers show Rudy Giuliani and John McCain as frontrunners for the GOP nomination.

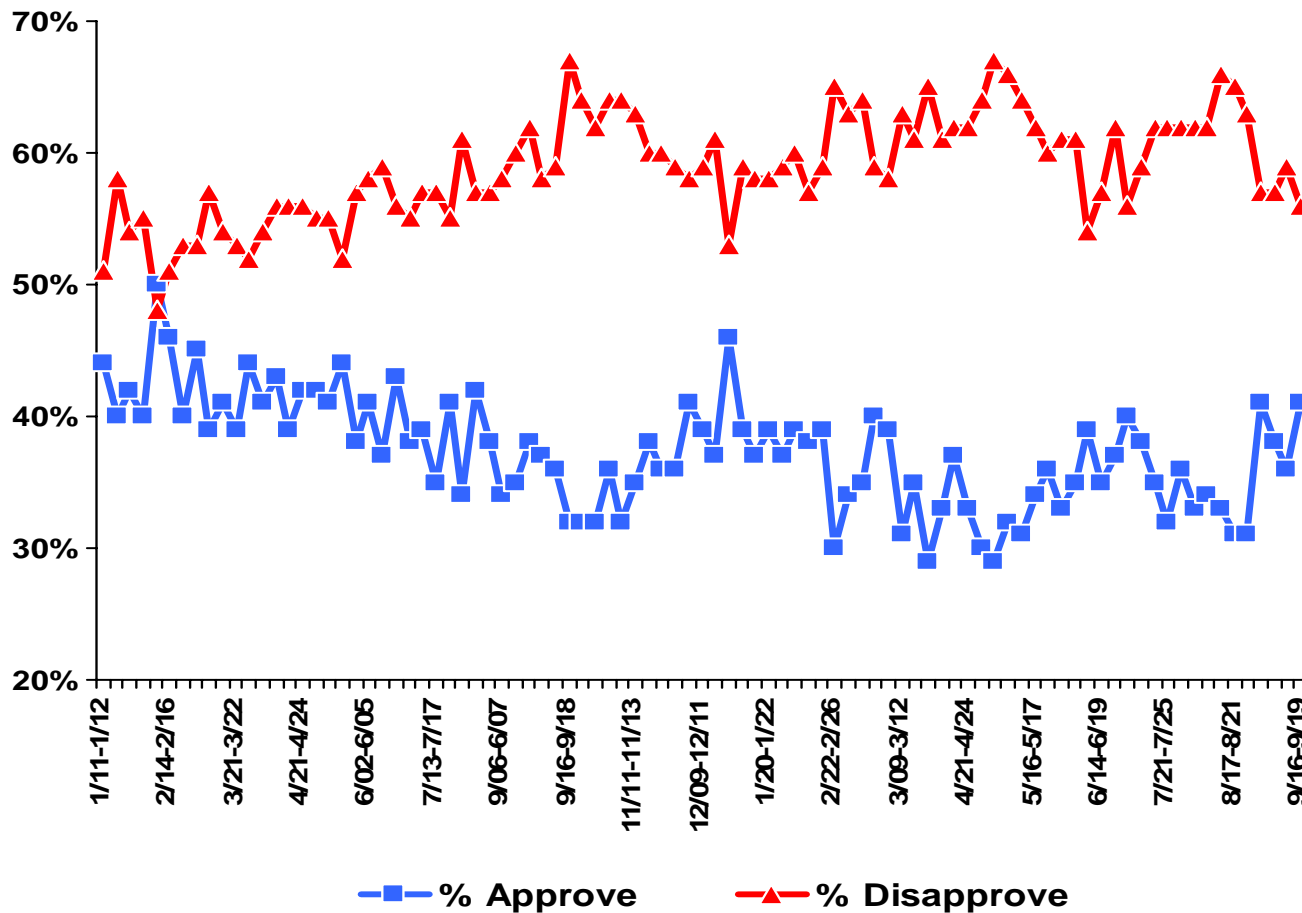
# George W. Bush Job Approval Rating



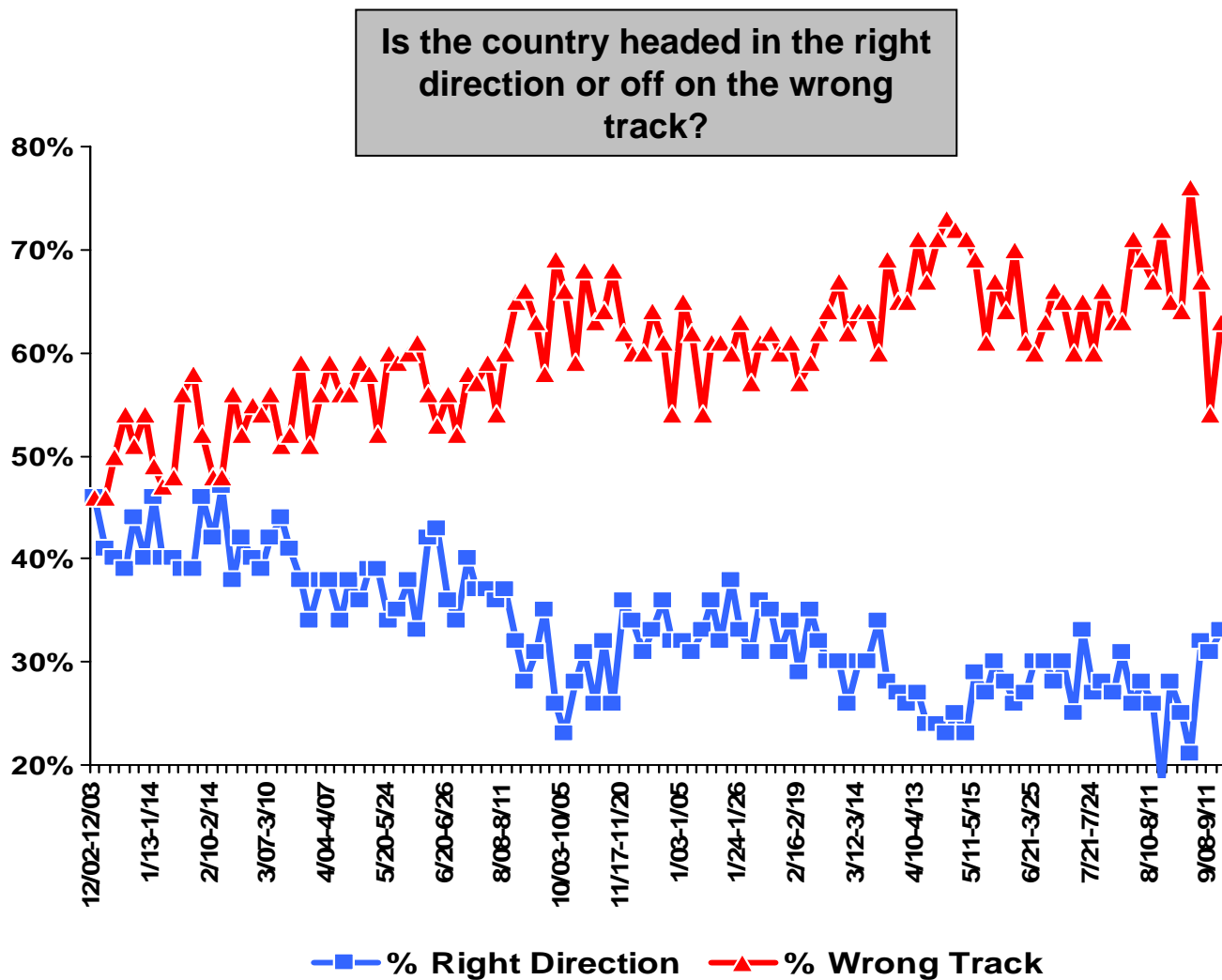
# The Economy: George W. Bush Job Approval Rating



# War in Iraq: George W. Bush Job Approval Rating



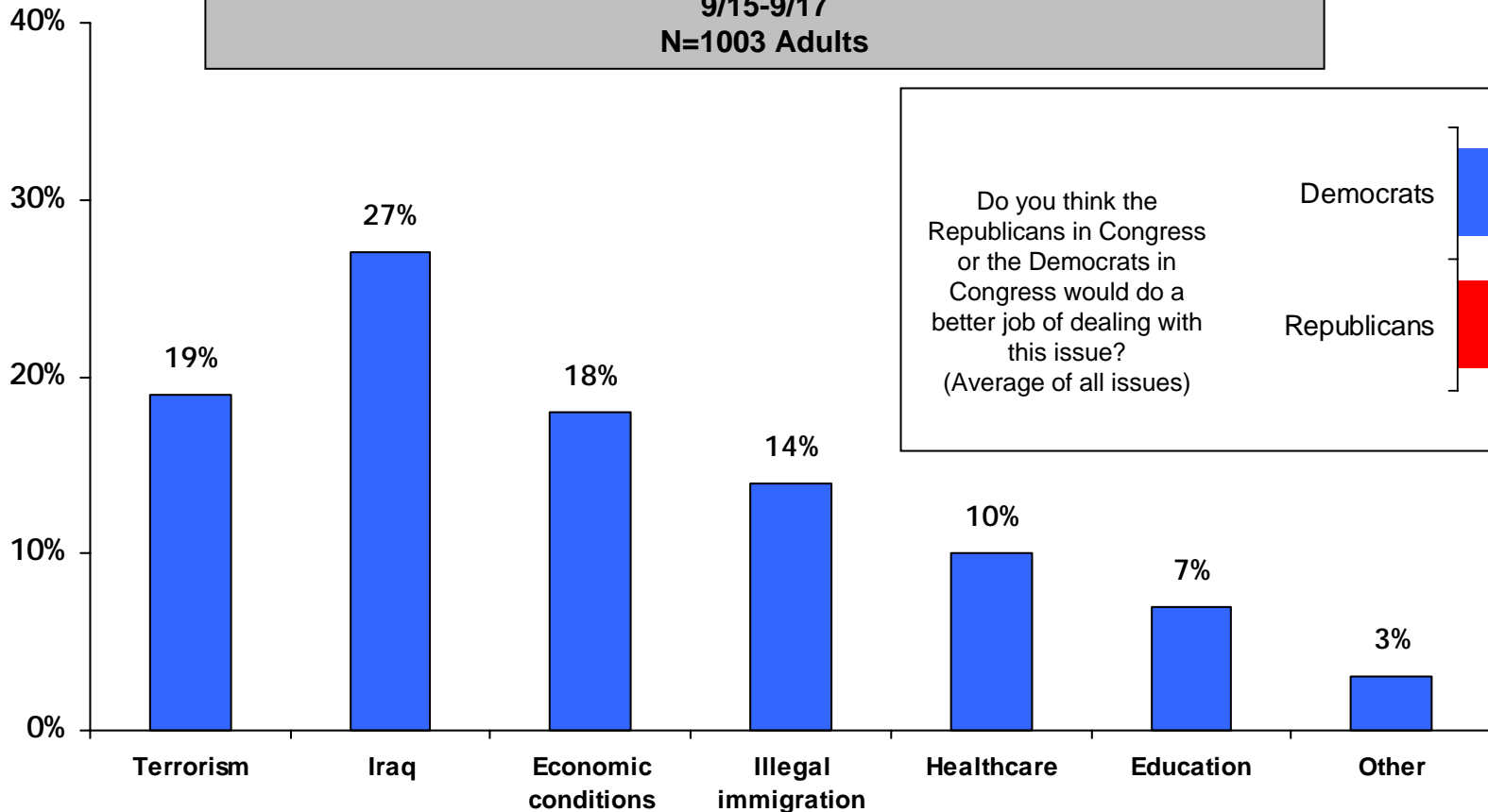
# Direction of the Country



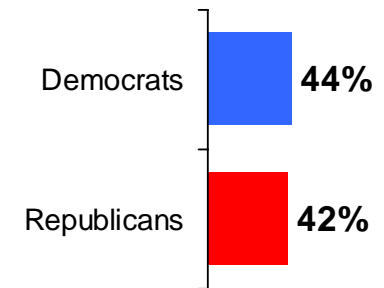
# Election Monitor Perspective: National Priorities

Which ONE of the following issues is MOST important to you when you think about your vote for Congress this year?

USA Today/Gallup Survey  
9/15-9/17  
N=1003 Adults



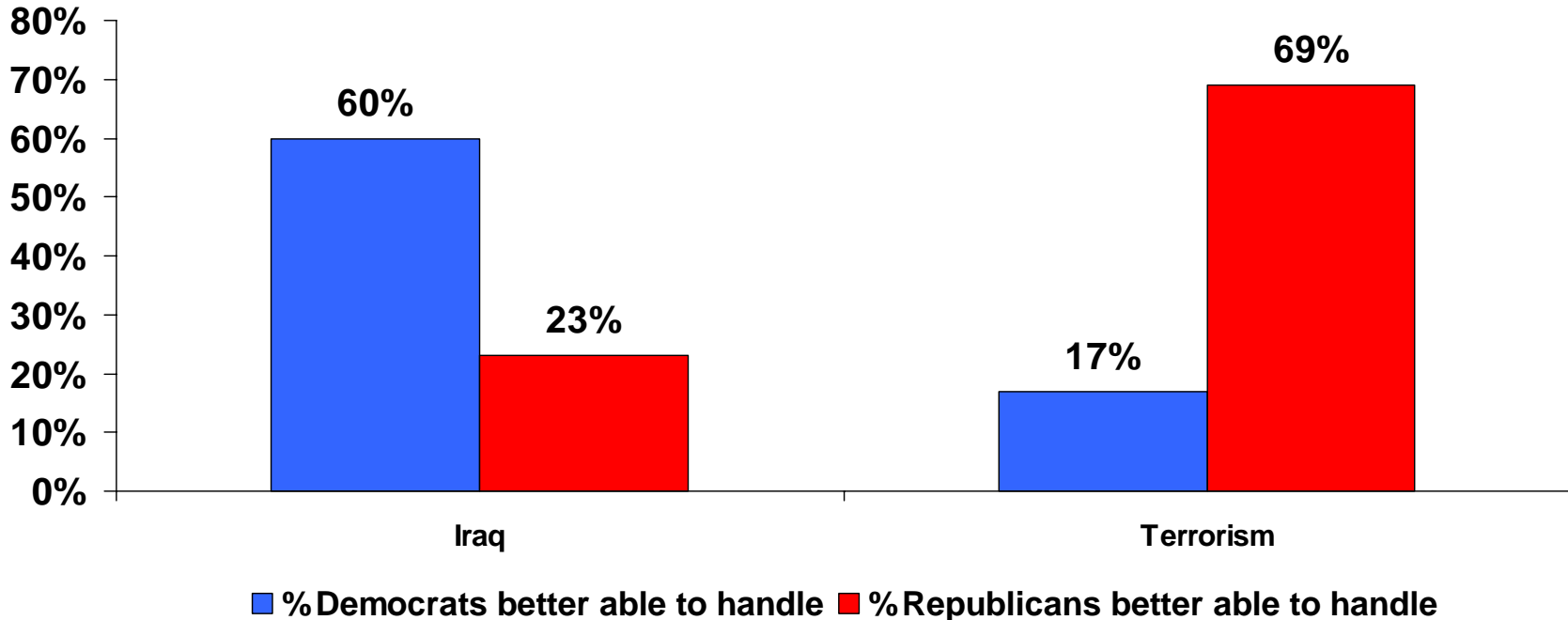
Do you think the Republicans in Congress or the Democrats in Congress would do a better job of dealing with this issue? (Average of all issues)



# Election Monitor Perspective: National Priorities

Most important issue to Vote vs. Party better able to handle that issue:

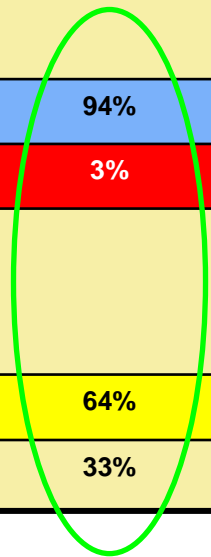
USA Today/Gallup Survey  
9/15-9/17  
N=888 Registered Voters



# Election Monitor Perspective: Party ID and the 2006 Elections

**Pew Survey**  
9/06-9/10  
N=1191 RV

	Total	Liberal Democrats	Moderate/ Conservative Democrats	Independents	Moderate/Liberal Republicans	Conservative Republicans	
If the election were held today, would you...	<b>Vote Democratic</b>	50%	94%	94%	46%	16%	6%
	<b>Vote Republican</b>	39%	4%	3%	31%	77%	94%
Is party control of congress a factor in your vote?	<b>Yes</b>	55%	78%	64%	44%	37%	62%
	<b>No</b>	41%	21%	33%	52%	60%	34%



# Election Monitor Perspective: Attitude and the 2006 Elections

Pew Survey  
9/06-9/10  
N=1191 RV

Midterm Year	1990	1994	1998	2002	2006
Do NOT want incumbent reelected	22%	29%	20%	19%	27%
Do not want MOST incumbents reelected	--	56%	37%	38%	49%
Midterm vote is a vote AGAINST President	15%	23%	16%	15%	36%
Party control of Congress matters in vote	--	--	41%	44%	55%

# Election Monitor Perspective: The Issues...Iraq vs. Terrorism

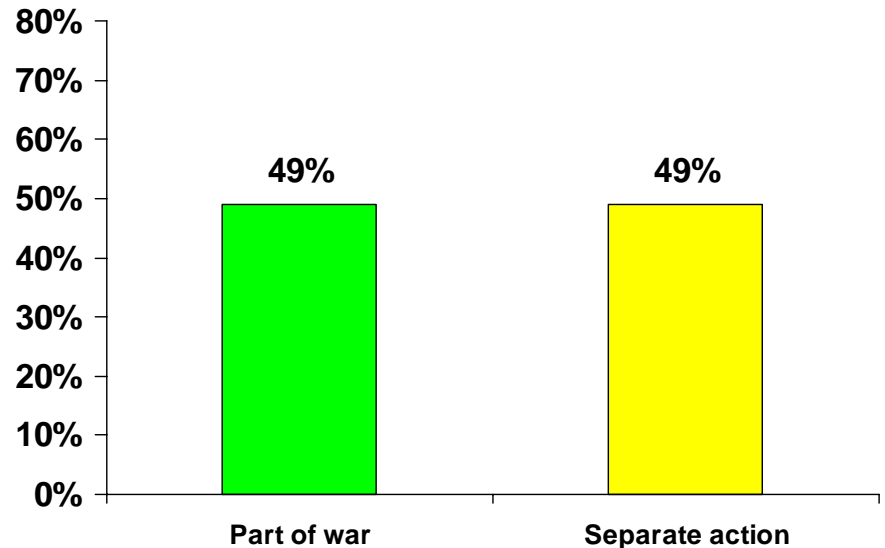
Which party can do a better job at handling...		
	Dems	GOP
Terrorism	32%	41%
Immigration	37%	32%
Iraq	40%	33%
Economy	46%	32%

Pew Survey  
9/06-9/10  
N=1191 RV

Do you consider the war in Iraq to be part of the war on terrorism which began on September 11, 2001, or do you consider it to be an entirely separate military action?  
  
USA Today/Gallup Survey  
9/15-9/17

Most Important Issue: Iraq			
	9/2006	5/2006	Change
All	26%	18%	+8
Republicans	16%	11%	+5
Democrats	22%	36%	+14
Independents	22%	23%	+1

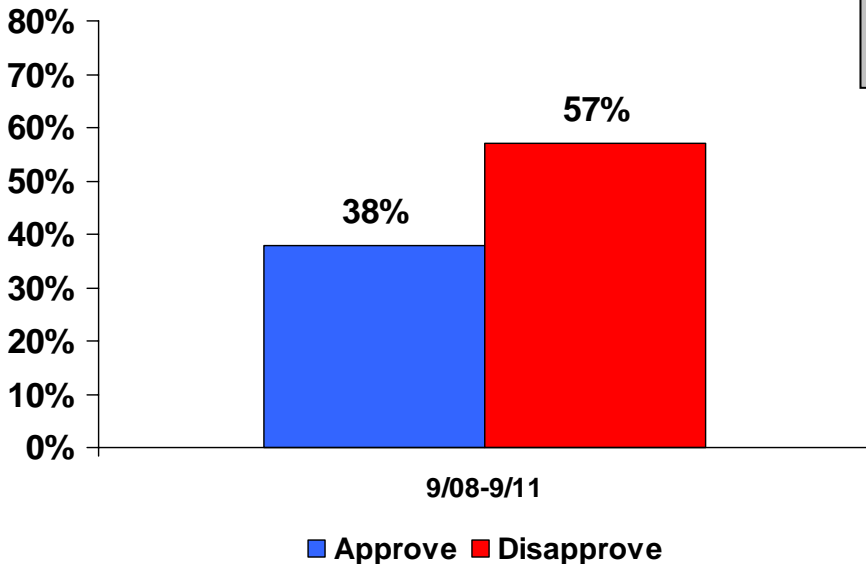
Most Important Issue: Terrorism			
	9/2006	5/2006	Change
All	15%	5%	+10
Republicans	23%	8%	+15
Democrats	9%	4%	+5
Independents	13%	5%	+8



# Election Monitor Perspective: The War in Iraq

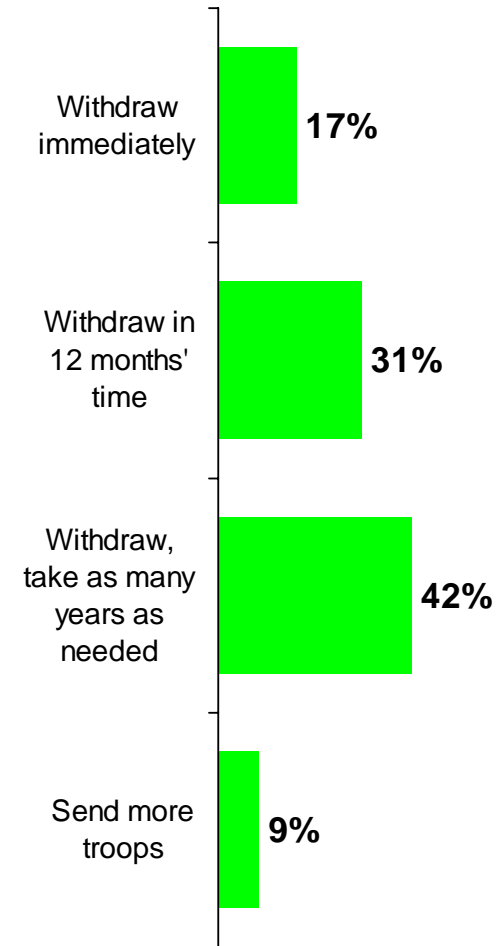
Do you approve or disapprove of the way George W. Bush is handling the situation in Iraq?

NBC News/WSJ Survey  
9/08-9/11  
N=1009 RV



USA Today/Gallup  
9/15-9/17  
N=1003 Adults

Here are four different plans the U.S. could follow in dealing with the war in Iraq. Which ONE do you prefer?



# Election Monitor Perspective: The War in Iraq (Cont'd)

In view of the developments since we first sent our troops to Iraq, do you think the United States made a mistake in sending troops to Iraq, or not?  
USA Today/Gallup Surveys

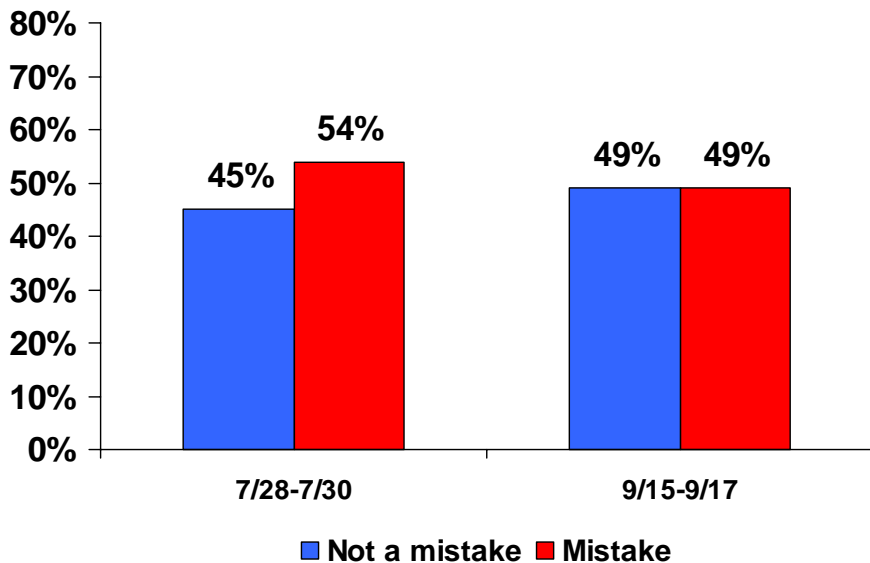
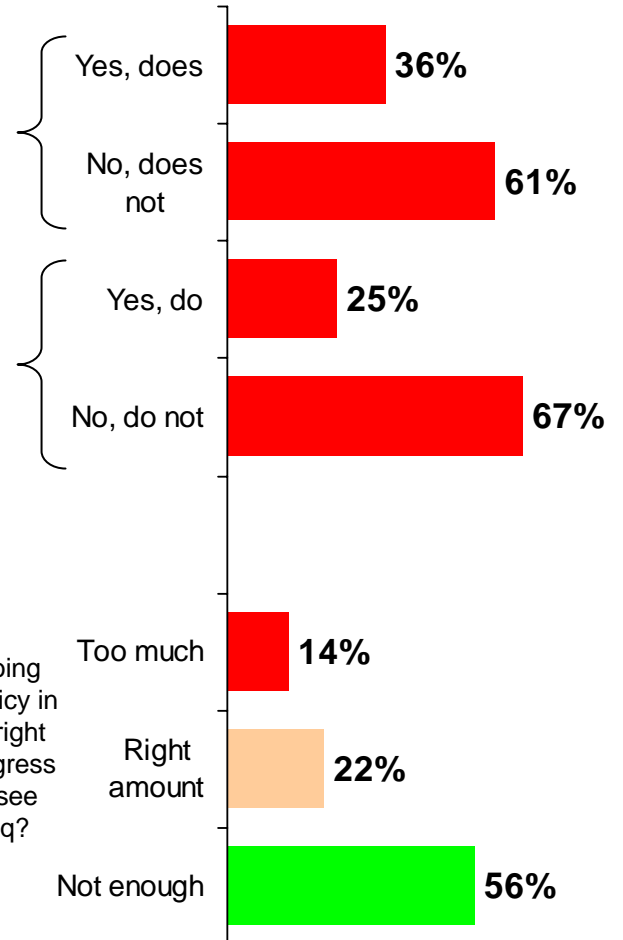
USA Today/Gallup  
9/15-9/17  
N=1003 Adults

George W. Bush

Democrats in Congress

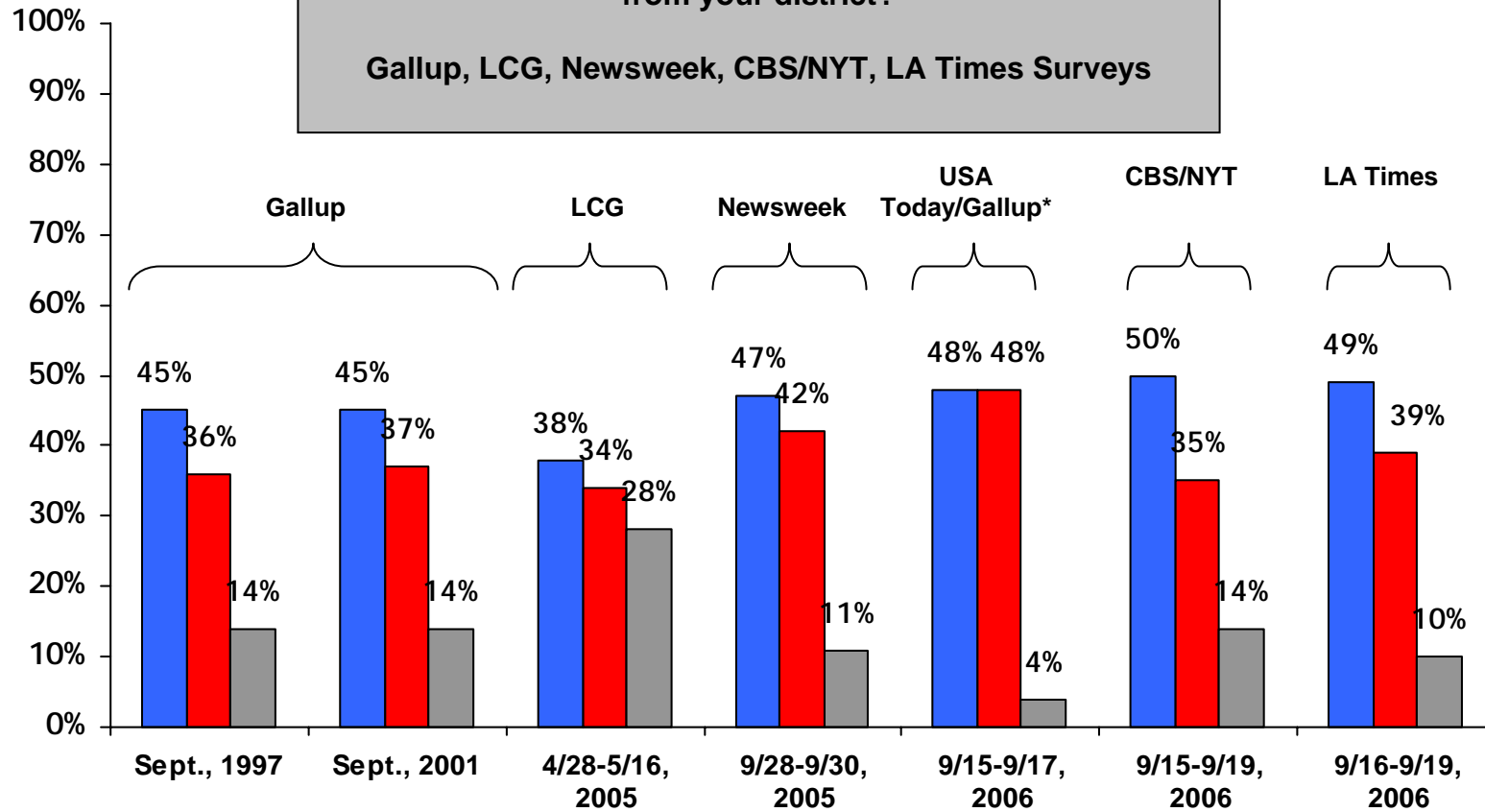
Do you think Congress is doing too much to oversee U.S. policy in the war in Iraq, is doing the right amount, or do you think Congress is not doing enough to oversee U.S. policy in the war in Iraq?

Do you think... does or does not have a clear plan for handling the situation in Iraq?



# Election Monitor Perspective: Generic Congressional Ballot

If the election for Congress were held today, would you vote for the Democratic candidate or the Republican candidate from your district?  
Gallup, LCG, Newsweek, CBS/NTY, LA Times Surveys



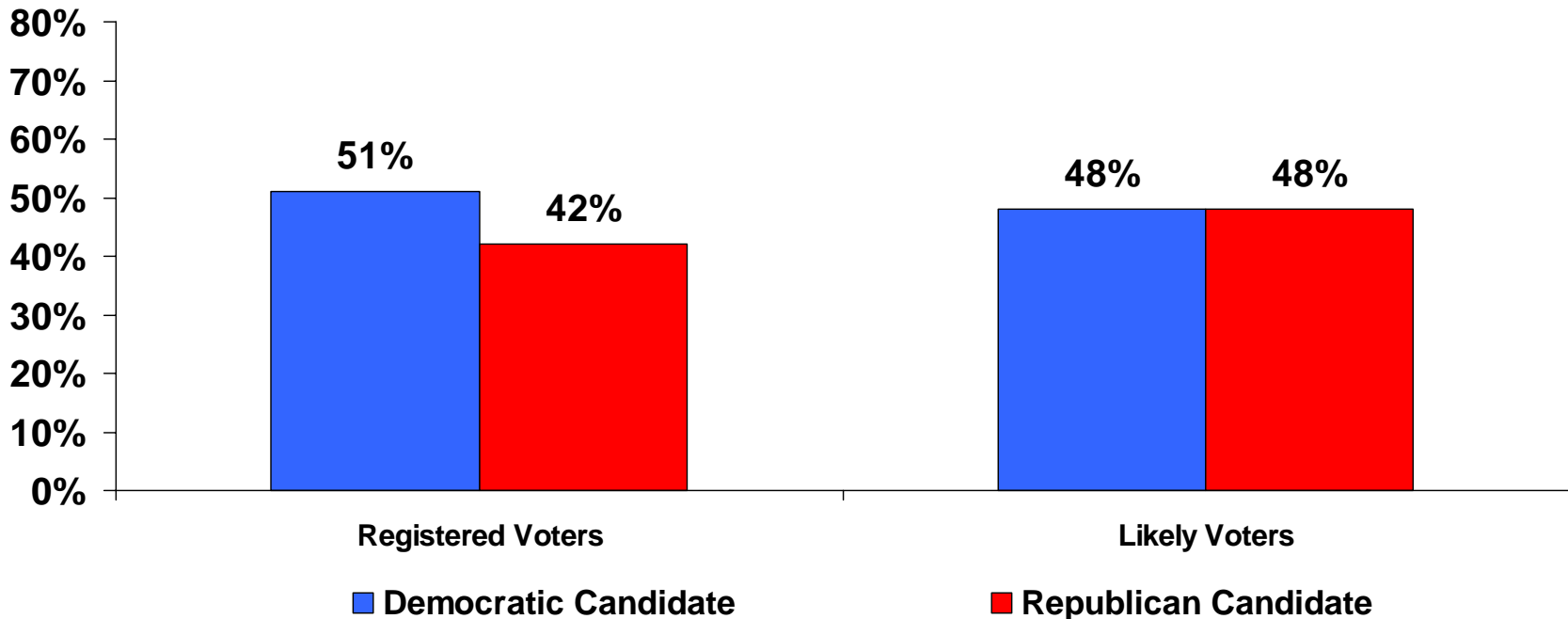
■ Democrat    ■ Republican    ■ Don't Know

\*Survey samples "Likely Voters"

# Election Monitor Perspective: Generic Congressional Ballot

If the elections for Congress were being held today, which party's candidate would you vote for in your Congressional district?

USA Today/Gallup Survey  
9/15-9/17



# Outlook 2008

## Cook Political Report/RT Strategies Poll

Presented by  
Peter Ventimiglia  
September 9, 2006

**2008 GOP Nomination: Giuliani Supporters vs. McCain Supporters**

	Giuliani Primary Voters	McCain Primary Voters
<b>Presidential Job Approval</b>		
Total Approve	75%	59%
Total Disapprove	17%	28%
<b>Right Direction/Wrong Track</b>		
Total Right Direction	63%	44%
Total Wrong Track	30%	50%
<b>Congressional Job Approval</b>		
Total Approve	53%	36%
Total Disapprove	34%	56%

Republicans and Republican-leaning who support Rudy Giuliani for the 2008 GOP Presidential nomination tend to be significantly more approving of President Bush, think that the country is going in the “Right Direction” and approve of the job that Congress is doing, as compared to McCain voters, majorities of whom believe the country is off on the “Wrong Track” and disapprove of the job Congress is doing.

**2008 GOP Nomination: First Choice & Giuliani Qualifications**

Majorities of Republicans aged 18-64 believe that the GOP should nominate Giuliani even after hearing criticisms of his stances on key social issues. Support for Giuliani in the face of these criticisms is strongest among those 18-64, where more than 7 in 10 think their party should nominate him for President

In a 2008 GOP candidate preference question, Rudy Giuliani has nearly double the support for the nomination than John McCain among self-identified Republicans. Giuliani's lead is also sizeable among Republican Women, and all age groups except for voters aged 65+, who favor McCain.

	Age			
	18-34	35-49	50-64	65+
GOP should nominate Giuliani for President	73%	54%	54%	48%
GOP should NOT nominate Giuliani for President	27%	43%	39%	39%

	Party ID		Gender		Age			
	Rep	Ind.	Men	Women	18-34	35-49	50-64	65+
John McCain	18%	25%	24%	16%	18%	15%	17%	30%
Rudy Giuliani	35%	24%	31%	34%	47%	30%	31%	25%

**2008 Dem Nomination: First Choice**

	Race		Gender		Age			
	White	Non-White	Men	Women	18-34	35-49	50-64	65+
Hillary Clinton	26%	54%	20%	40%	25%	35%	31%	34%
Al Gore	18%	20%	24%	15%	25%	20%	16%	13%

In a 2008 nominee preference question asked of Democrats and Democratic-leaning, Hillary Clinton commands a sizeable lead over second-place potential candidate Al Gore among Non-white voters, as well among as Women and people aged 65+

**“Likeability Thermometer” Scores**

		Party ID			Gender	
		Rep.	Ind.	Dem.	Men	Women
	All Registered Voters					
John McCain	54.8	57.9	53.7	53.1	54.6	55.0
Rudy Giuliani	59.4	73.1	55.0	51.2	56.5	62.1

Rudy Giuliani scores more than 13 points higher than his average on likeability among self-identified Republicans, while John McCain’s likeability score among members of his own party ranks just over 3 points higher than his average.

# Lombardo Consulting Group

The LCG Opinion Monitor is a compilation and analysis of various publicly-available surveys pertaining to selected political and policy-related issues including but not limited to:

- ABC News/Washington Post
- American Research Group
- Associated Press/Ipsos
- CBS News
- CNN
- Fox News/Opinion Dynamics
- Gallup
- Annenberg Election Survey
- Newsweek
- The Pew Research Center
- Time
- USA Today

Data updated daily